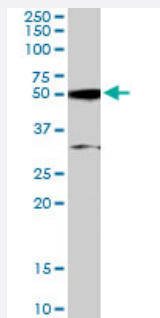


# ATF2 polyclonal antibody

Catalog # PAB6063      Size 100 ug

## Applications



### Western Blot (Tissue lysate)

ATF2 polyclonal antibody (Cat # PAB6063) staining (0.5 ug/mL) of human placenta lysate (RIPA buffer, 35 ug total protein per lane). Primary incubated for 12 hour. Detected by western blot using chemiluminescence.

## Specification

**Product Description** Goat polyclonal antibody raised against synthetic peptide of ATF2.

**Immunogen** A synthetic peptide corresponding to human ATF2.

**Sequence** C-IVMAPSSQSQPSGS

**Host** Goat

**Theoretical MW (kDa)** 54.5

**Reactivity** Human

**Form** Liquid

**Purification** Antigen affinity purification

**Concentration** 0.5 mg/mL

**Quality Control Testing** Antibody Reactive Against Synthetic Peptide.

**Recommend Usage**  
 ELISA (1:32000)  
 Western Blot (0.5-1.5 ug/mL)  
 The optimal working dilution should be determined by the end user.

Storage Buffer	In Tris saline, pH 7.3 (0.5% BSA, 0.02% sodium azide)
Storage Instruction	Store at -20°C. Aliquot to avoid repeated freezing and thawing.
Note	This product contains sodium azide: a POISONOUS AND HAZARDOUS SUBSTANCE which should be handled by trained staff only.

## Applications

- Western Blot (Tissue lysate)

ATF2 polyclonal antibody (Cat # PAB6063) staining (0.5 ug/mL) of human placenta lysate (RIPA buffer, 35 ug total protein per lane). Primary incubated for 12 hour. Detected by western blot using chemiluminescence.

- Enzyme-linked Immunoabsorbent Assay

## Gene Info — ATF2

Entrez GeneID	<a href="#">1386</a>
Protein Accession#	<a href="#">NP_001871.2</a>
Gene Name	ATF2
Gene Alias	CRE-BP1, CREB2, HB16, MGC111558, TREB7
Gene Description	activating transcription factor 2
Omim ID	<a href="#">123811</a>
Gene Ontology	<a href="#">Hyperlink</a>

Gene Summary	This gene encodes a transcription factor that is a member of the leucine zipper family of DNA binding proteins. This protein binds to the cAMP-responsive element (CRE), an octameric palindrome. The protein forms a homodimer or heterodimer with c-Jun and stimulates CRE-dependent transcription. The protein is also a histone acetyltransferase (HAT) that specifically acetylates histones H2B and H4 in vitro; thus it may represent a class of sequence-specific factors that activate transcription by direct effects on chromatin components. Additional transcript variants have been identified but their biological validity has not been determined. [provided by RefSeq]
Other Designations	OTTHUMP00000163262 activating transcription factor 2 splice variant ATF2-var2 cAMP responsive element binding protein 2, formerly

## Publication Reference

- [Smads, TAK1, and their common target ATF-2 play a critical role in cardiomyocyte differentiation.](#)

Monzen K, Hiroi Y, Kudoh S, Akazawa H, Oka T, Takimoto E, Hayashi D, Hosoda T, Kawabata M, Miyazono K, Ishii S, Yazaki Y, Nagai R, Komuro I.

The Journal of Cell Biology 2001 May; 153(4):687.

## Pathway

- [MAPK signaling pathway](#)

## Disease

- [Bipolar Disorder](#)
- [Cardiovascular Diseases](#)
- [Diabetes Mellitus](#)
- [Edema](#)
- [Genetic Predisposition to Disease](#)
- [Schizophrenia](#)
- [Tobacco Use Disorder](#)