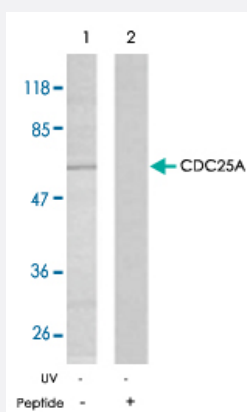


CDC25A polyclonal antibody

Catalog # PAB5284

Size 100 ug

Applications



Western Blot (Cell lysate)

Western blot analysis of extracts from A2780 cells using CDC25A polyclonal antibody (Cat # PAB5284) .

Specification

Product Description	Rabbit polyclonal antibody raised against synthetic peptide of CDC25A.
Immunogen	A synthetic peptide corresponding to residues surrounding S75 of human CDC25A.
Host	Rabbit
Reactivity	Human, Mouse, Rat
Form	Liquid
Quality Control Testing	Antibody Reactive Against Synthetic Peptide.
Recommend Usage	Western Blot (1:500-1:1000) The optimal working dilution should be determined by the end user.
Storage Buffer	In PBS, 150 mM NaCl, pH 7.4 (50% glycerol, 0.02% sodium azide)
Storage Instruction	Store at -20°C. Aliquot to avoid repeated freezing and thawing.

Note

This product contains sodium azide: a POISONOUS AND HAZARDOUS SUBSTANCE which should be handled by trained staff only.

Applications

- Western Blot (Cell lysate)

Western blot analysis of extracts from A2780 cells using CDC25A polyclonal antibody (Cat # PAB5284).

Gene Info — CDC25A

Entrez GeneID [993](#)

Gene Name CDC25A

Gene Alias CDC25A2

Gene Description cell division cycle 25 homolog A (S. pombe)

Omim ID [116947](#)

Gene Ontology [Hyperlink](#)

Gene Summary CDC25A is a member of the CDC25 family of phosphatases. CDC25A is required for progression from G1 to the S phase of the cell cycle. It activates the cyclin-dependent kinase CDC2 by removing two phosphate groups. CDC25A is specifically degraded in response to DNA damage, which prevents cells with chromosomal abnormalities from progressing through cell division. CDC25A is an oncogene, although its exact role in oncogenesis has not been demonstrated. Two transcript variants encoding different isoforms have been found for this gene. [provided by RefSeq]

Other Designations M-phase inducer phosphatase 1|cell division cycle 25A|dual specificity phosphatase CDC25A

Publication Reference

- [SCFbeta-TRCP links Chk1 signaling to degradation of the Cdc25A protein phosphatase.](#)

Jin J, Shirogane T, Xu L, Nalepa G, Qin J, Elledge SJ, Harper JW.

Genes & Development 2003 Dec; 17(24):3062.

- [Chk1 is activated transiently and targets Cdc25A for degradation at the Xenopus midblastula transition.](#)

Shimuta K, Nakajo N, Uto K, Hayano Y, Okazaki K, Sagata N.

The EMBO Journal 2002 Jul; 21(14):3694.

Pathway

- [Cell cycle](#)

Disease

- [Adenocarcinoma](#)
- [Breast Neoplasms](#)
- [Esophageal Neoplasms](#)
- [Genetic Predisposition to Disease](#)
- [Lung Neoplasms](#)
- [Ovarian Neoplasms](#)
- [Pulmonary Disease](#)
- [Schizophrenia](#)
- [Tobacco Use Disorder](#)
- [Urinary Bladder Neoplasms](#)
- [Werner syndrome](#)