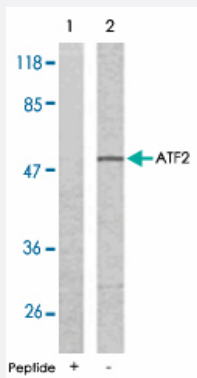


ATF2 polyclonal antibody

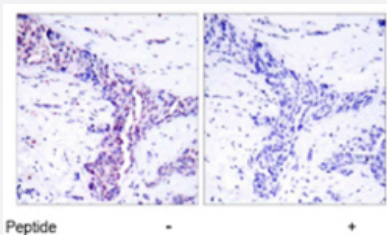
Catalog # PAB5255 Size 100 ug

Applications



Western Blot (Cell lysate)

Western blot analysis of extract from LoVo cells using ATF2 polyclonal antibody (Cat # PAB5255) .



Immunohistochemistry (Formalin/PFA-fixed paraffin-embedded sections)

Immunohistochemical analysis of paraffin-embedded human breast carcinoma tissue using ATF2 polyclonal antibody (Cat # PAB5255) .

Specification

Product Description	Rabbit polyclonal antibody raised against synthetic peptide of ATF2.
Immunogen	A synthetic peptide corresponding to residues surrounding T73/T55 of human ATF2.
Host	Rabbit
Reactivity	Human, Mouse, Rat
Form	Liquid
Quality Control Testing	Antibody Reactive Against Synthetic Peptide.

Recommend Usage	Immunohistochemistry (1:50-1:100) Western Blot (1:500-1:1000) The optimal working dilution should be determined by the end user.
Storage Buffer	In PBS, 150 mM NaCl, pH 7.4 (50% glycerol, 0.02% sodium azide)
Storage Instruction	Store at -20°C. Aliquot to avoid repeated freezing and thawing.
Note	This product contains sodium azide: a POISONOUS AND HAZARDOUS SUBSTANCE which should be handled by trained staff only.

Applications

- Western Blot (Cell lysate)

Western blot analysis of extract from LoVo cells using ATF2 polyclonal antibody (Cat # PAB5255) .

- Immunohistochemistry (Formalin/PFA-fixed paraffin-embedded sections)

Immunohistochemical analysis of paraffin-embedded human breast carcinoma tissue using ATF2 polyclonal antibody (Cat # PAB5255) .

Gene Info — ATF2

Entrez GeneID	1386
Gene Name	ATF2
Gene Alias	CRE-BP1, CREB2, HB16, MGC111558, TREB7
Gene Description	activating transcription factor 2
Omim ID	123811
Gene Ontology	Hyperlink
Gene Summary	This gene encodes a transcription factor that is a member of the leucine zipper family of DNA binding proteins. This protein binds to the cAMP-responsive element (CRE), an octameric palindrome. The protein forms a homodimer or heterodimer with c-Jun and stimulates CRE-dependent transcription. The protein is also a histone acetyltransferase (HAT) that specifically acetylates histones H2B and H4 in vitro; thus it may represent a class of sequence-specific factors that activate transcription by direct effects on chromatin components. Additional transcript variants have been identified but their biological validity has not been determined. [provided by RefSeq]
Other Designations	OTTHUMP00000163262 activating transcription factor 2 splice variant ATF2-var2 cAMP responsive element binding protein 2, formerly

Publication Reference

- [Large-scale characterization of HeLa cell nuclear phosphoproteins.](#)

Beausoleil SA, Jedrychowski M, Schwartz D, Elias JE, Villen J, Li J, Cohn MA, Cantley LC, Gygi SP.
PNAS 2004 Aug; 101(33):12130.

- [ATF-2 contains a phosphorylation-dependent transcriptional activation domain.](#)

Livingstone C, Patel G, Jones N.
The EMBO Journal 1995 Apr; 14(8):1785.

Application: WB-Re, Insect, Recombinant protein

- [Activating transcription factor-2 DNA-binding activity is stimulated by phosphorylation catalyzed by p42 and p54 microtubule-associated protein kinases.](#)

Abdel-Hafiz HA, Heasley LE, Kyriakis JM, Avruch J, Kroll DJ, Johnson GL, Hoeffler JP.
Molecular Endocrinology 1992 Dec; 6(12):2079.

Application: Func, N/A, Recombinant protein

Pathway

- [MAPK signaling pathway](#)

Disease

- [Bipolar Disorder](#)
- [Cardiovascular Diseases](#)
- [Diabetes Mellitus](#)
- [Edema](#)
- [Genetic Predisposition to Disease](#)
- [Schizophrenia](#)
- [Tobacco Use Disorder](#)