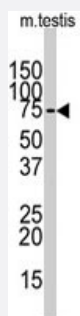


SOX30 polyclonal antibody

Catalog # PAB4863

Size 400 uL

Applications



Western Blot (Tissue lysate)

Western blot analysis of SOX30 polyclonal antibody (Cat # PAB4863) in mouse testis tissue lysate (35 ug/lane). SOX30 (arrow) was detected using the purified polyclonal antibody (1 : 60 dilution).

Specification

Product Description	Rabbit polyclonal antibody raised against synthetic peptide of SOX30.
Immunogen	A synthetic peptide (conjugated with KLH) corresponding to internal region of human SOX30.
Host	Rabbit
Reactivity	Human, Mouse
Form	Liquid
Purification	Ammonium sulfate precipitation
Recommend Usage	ELISA (1:1000) Western Blot (1:50-100) The optimal working dilution should be determined by the end user.
Storage Buffer	In PBS (0.09% sodium azide)
Storage Instruction	Store at 4°C. For long term storage store at -20°C. Aliquot to avoid repeated freezing and thawing.
Note	This product contains sodium azide: a POISONOUS AND HAZARDOUS SUBSTANCE which should be handled by trained staff only.

Applications

- Western Blot (Tissue lysate)

Western blot analysis of SOX30 polyclonal antibody (Cat # PAB4863) in mouse testis tissue lysate (35 ug/lane). SOX30 (arrow) was detected using the purified polyclonal antibody (1 : 60 dilution).

- Enzyme-linked Immunoabsorbent Assay

Gene Info — SOX30

Entrez GeneID [11063](#)

Protein Accession# [NP_848511;O94993](#)

Gene Name SOX30

Gene Alias -

Gene Description SRY (sex determining region Y)-box 30

Omim ID [606698](#)

Gene Ontology [Hyperlink](#)

Gene Summary This gene encodes a member of the SOX (SRY-related HMG-box) family of transcription factors involved in the regulation of embryonic development and in the determination of the cell fate. The encoded protein may act as a transcriptional regulator after forming a protein complex with other proteins. The protein may be involved in the differentiation of developing male germ cells. Two transcript variants encoding distinct isoforms have been identified for this gene. [provided by RefSeq]

Other Designations Sox30 protein type II

Publication Reference

- [Origin and diversity of the SOX transcription factor gene family: genome-wide analysis in Fugu rubripes.](#)

Koopman P, Schepers G, Brenner S, Venkatesh B.

Gene 2004 Mar; 328:177.

- [HMG-box sequences from microbats homologous to the human SOX30 HMG-box.](#)

Bullejos M, Diaz de la Guardia R, Barragan MJ, Sanchez A.

Genetica 2000 Nov; 110(2):157.

- [Identification of a novel Sry-related gene and its germ cell-specific expression.](#)

Osaki E, Nishina Y, Inazawa J, Copeland NG, Gilbert DJ, Jenkins NA, Ohsugi M, Tezuka T, Yoshida M, Semba K.

Nucleic Acids Research 1999 Jun; 27(12):2503.

Application: Added, Recombinant protein