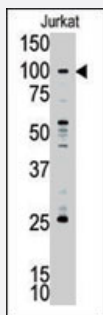


MLLT10 polyclonal antibody

Catalog # PAB4767

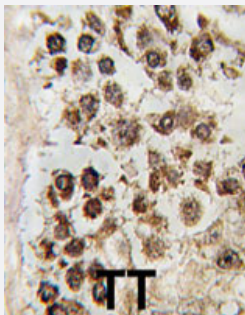
Size 400 uL

Applications



Western Blot (Cell lysate)

Western blot analysis of MLLT10 polyclonal antibody (Cat # PAB4767) in Jurkat cell lysate. MLLT10 (arrow) was detected using the purified polyclonal antibody.



Immunohistochemistry (Formalin/PFA-fixed paraffin-embedded sections)

Formalin-fixed and paraffin-embedded human testis tissue reacted with MLLT10 polyclonal antibody (Cat # PAB4767), which was peroxidase-conjugated to the secondary antibody, followed by DAB staining. This data demonstrates the use of this antibody for immunohistochemistry; clinical relevance has not been evaluated.

Specification

Product Description	Rabbit polyclonal antibody raised against synthetic peptide of MLLT10.
Immunogen	A synthetic peptide (conjugated with KLH) corresponding to C-terminus of human MLLT10.
Host	Rabbit
Reactivity	Human
Form	Liquid
Purification	Protein G purification

Recommend Usage	ELISA (1:1000) Western Blot (1:100-500) Immunohistochemistry (1:10-50) The optimal working dilution should be determined by the end user.
Storage Buffer	In PBS (0.09% sodium azide)
Storage Instruction	Store at 4°C. For long term storage store at -20°C. Aliquot to avoid repeated freezing and thawing.
Note	This product contains sodium azide: a POISONOUS AND HAZARDOUS SUBSTANCE which should be handled by trained staff only.

Applications

- Western Blot (Cell lysate)

Western blot analysis of MLLT10 polyclonal antibody (Cat # PAB4767) in Jurkat cell lysate. MLLT10 (arrow) was detected using the purified polyclonal antibody.

- Immunohistochemistry (Formalin/PFA-fixed paraffin-embedded sections)

Formalin-fixed and paraffin-embedded human testis tissue reacted with MLLT10 polyclonal antibody (Cat # PAB4767), which was peroxidase-conjugated to the secondary antibody, followed by DAB staining. This data demonstrates the use of this antibody for immunohistochemistry; clinical relevance has not been evaluated.

- Enzyme-linked Immunoabsorbent Assay

Gene Info — MLLT10

Entrez GeneID	8028
Protein Accession#	NP_004632:P55197
Gene Name	MLLT10
Gene Alias	AF10, DKFZp686E10210, MGC75086
Gene Description	myeloid/lymphoid or mixed-lineage leukemia (trithorax homolog, Drosophila); translocated to, 10
Omim ID	601626 602409
Gene Ontology	Hyperlink
Gene Summary	Drosophila); translocated to

Other Designations

ALL-1 fused gene from chromosome 10|OTTHUMP00000019275|OTTHUMP00000045273|myeloid/lymphoid or mixed-lineage leukemia (trithorax homolog); translocated to, 10|myeloid/lymphoid or mixed-lineage leukemia translocated to, 10|type I AF10 protein

Publication Reference

- [The leucine zipper motif of the Drosophila AF10 homologue can inhibit PRE-mediated repression: implications for leukemogenic activity of human MLL-AF10 fusions.](#)

Perrin L, Bloyer S, Ferraz C, Agrawal N, Sinha P, Dura JM.

Molecular and Cellular Biology 2003 Jan; 23(1):119.

- [ALL-1 is a histone methyltransferase that assembles a supercomplex of proteins involved in transcriptional regulation.](#)

Nakamura T, Mori T, Tada S, Krajewski W, Rozovskaia T, Wassell R, Dubois G, Mazo A, Croce CM, Canaani E.

Molecular Cell 2002 Nov; 10(5):1119.

- [Molecular and fluorescence in situ hybridization analysis of a 10;11 rearrangement in a case of infant acute monocytic leukemia.](#)

Roll P, Zattara-Cannoni H, Bustos-Bernard MC, Curtillet C, Michel G, Vagner-Capodano AM.

Cancer Genetics and Cytogenetics 2002 Jun; 135(2):187.

Disease

- [Cardiovascular Diseases](#)
- [Diabetes Mellitus](#)
- [Edema](#)