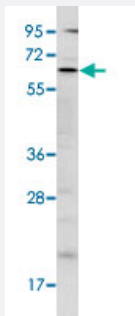


# BIRC3 polyclonal antibody

Catalog # PAB4708

Size 400 uL

## Applications



### Western Blot (Cell lysate)

Western blot analysis of A-549 cell lysate (35 ug/lane) with BIRC3 polyclonal antibody (Cat # PAB4708).



### Immunohistochemistry (Formalin/PFA-fixed paraffin-embedded sections)

Formalin-fixed and paraffin-embedded human cancer tissue reacted with BIRC3 polyclonal antibody (Cat # PAB4708), which was peroxidase-conjugated to the secondary antibody, followed by DAB staining. This data demonstrates the use of this antibody for immunohistochemistry; clinical relevance has not been evaluated. BC = breast carcinoma.

## Specification

<b>Product Description</b>	Rabbit polyclonal antibody raised against synthetic peptide of BIRC3.
<b>Immunogen</b>	A synthetic peptide (conjugated with KLH) corresponding to N-terminus of human BIRC3.
<b>Host</b>	Rabbit
<b>Reactivity</b>	Human
<b>Form</b>	Liquid
<b>Purification</b>	Protein A purification

<b>Recommend Usage</b>	ELISA (1:1000) Western Blot (1:100-500) Immunohistochemistry (1:50-100) The optimal working dilution should be determined by the end user.
<b>Storage Buffer</b>	In PBS (0.09% sodium azide)
<b>Storage Instruction</b>	Store at 4°C. For long term storage store at -20°C. Aliquot to avoid repeated freezing and thawing.
<b>Note</b>	This product contains sodium azide: a POISONOUS AND HAZARDOUS SUBSTANCE which should be handled by trained staff only.

## Applications

- Western Blot (Cell lysate)

Western blot analysis of A-549 cell lysate (35 ug/lane) with BIRC3 polyclonal antibody (Cat # PAB4708).

- Immunohistochemistry (Formalin/PFA-fixed paraffin-embedded sections)

Formalin-fixed and paraffin-embedded human cancer tissue reacted with BIRC3 polyclonal antibody (Cat # PAB4708), which was peroxidase-conjugated to the secondary antibody, followed by DAB staining. This data demonstrates the use of this antibody for immunohistochemistry; clinical relevance has not been evaluated. BC = breast carcinoma.

- Enzyme-linked Immunoabsorbent Assay

## Gene Info — BIRC3

<b>Entrez GeneID</b>	<a href="#">330</a>
<b>Protein Accession#</b>	<a href="#">BIR3_HUMAN</a>
<b>Gene Name</b>	BIRC3
<b>Gene Alias</b>	AIP1, API2, CIAP2, HAIP1, HIAP1, MALT2, MIHC, RNF49
<b>Gene Description</b>	baculoviral IAP repeat-containing 3
<b>Omim ID</b>	<a href="#">601721</a>
<b>Gene Ontology</b>	<a href="#">Hyperlink</a>

## Gene Summary

The protein encoded by this gene is a member of a family of proteins that inhibits apoptosis by binding to tumor necrosis factor receptor-associated factors TRAF1 and TRAF2, probably by interfering with activation of ICE-like proteases. The encoded protein inhibits apoptosis induced by serum deprivation but does not affect apoptosis resulting from exposure to menadione, a potent inducer of free radicals. The amino acid sequence predicts three baculovirus IAP repeat domains and a ring finger domain. Transcript variants encoding the same isoform have been identified. [provided by RefSeq]

## Other Designations

TNFR2-TRAF signaling complex protein|apoptosis inhibitor 2|baculoviral IAP repeat-containing protein 3|inhibitor of apoptosis protein 1|mammalian IAP homolog C

## Publication Reference

- [Heterogeneous copy numbers of API2-MALT1 chimeric transcripts in mucosa-associated lymphoid tissue lymphoma.](#)

Suguro-Katayama M, Suzuki R, Kasugai Y, Nakamura T, Suzuki H, Hosokawa Y, Shiku H, Nakamura S, Seto M. Leukemia 2003 Dec; 17(12):2508.

- [Induction of cIAP-2 in human colon cancer cells through PKC delta/NF-kappa B.](#)

Wang Q, Wang X, Evers BM. The Journal of Biological Chemistry 2003 Dec; 278(51):51091.

Application: WB, Human, Caco-2 cells

- [cIAP-2 block apoptotic events in bladder cancer cells.](#)

Jonsson G, Paulie S, Grandien A. Anticancer Res 2003 Jul; 23(4).

## Pathway

- [Apoptosis](#)
- [Focal adhesion](#)
- [Pathways in cancer](#)
- [Small cell lung cancer](#)
- [Ubiquitin mediated proteolysis](#)

## Disease

- [Adenocarcinoma](#)
- [Cardiovascular Diseases](#)
- [Diabetes Mellitus](#)
- [Ductus Arteriosus](#)
- [Edema](#)
- [Esophageal Neoplasms](#)
- [Genetic Predisposition to Disease](#)
- [Infant](#)
- [Lung Neoplasms](#)
- [Pulmonary Disease](#)
- [Urinary Bladder Neoplasms](#)
- [Werner syndrome](#)