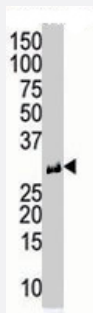


# RCAN1 polyclonal antibody

Catalog # PAB4385

Size 400 uL

## Applications



### Western Blot (Cell lysate)

Endothelial cell lysate transferred to membrane was incubated with RCAN1 polyclonal antibody (Cat # PAB4385) at a 1 : 500 dilution in 2% BSA in TBST at 4°C overnight . Data courtesy of Dr . Katherine Healey, NWCRF Institute, School of Biological Sciences, University of Wales Bangor .

## Specification

Product Description	Rabbit polyclonal antibody raised against synthetic peptide of RCAN1.
Immunogen	A synthetic peptide (conjugated with KLH) corresponding to internal region of human RCAN1.
Host	Rabbit
Reactivity	Human
Form	Liquid
Purification	Protein G purification
Recommend Usage	ELISA (1:1000) Western Blot (1:100-500) The optimal working dilution should be determined by the end user.
Storage Buffer	In PBS (0.09% sodium azide)
Storage Instruction	Store at 4°C. For long term storage store at -20°C. Aliquot to avoid repeated freezing and thawing.
Note	This product contains sodium azide: a POISONOUS AND HAZARDOUS SUBSTANCE which should be handled by trained staff only.

## Applications

- Western Blot (Cell lysate)

Endothelial cell lysate transferred to membrane was incubated with RCAN1 polyclonal antibody (Cat # PAB4385) at a 1 : 500 dilution in 2% BSA in TBST at 4°C overnight . Data courtesy of Dr . Katherine Healey, NWCRF Institute, School of Biological Sciences, University of Wales Bangor .

- Enzyme-linked Immunoabsorbent Assay

## Gene Info — RCAN1

Entrez GeneID	<a href="#">1827</a>
Protein Accession#	<a href="#">NP_004405;Q7Z555</a>
Gene Name	RCAN1
Gene Alias	ADAPT78, CSP1, DSC1, DSCR1, MCIP1, RCN1
Gene Description	regulator of calcineurin 1
Omim ID	<a href="#">602917</a>
Gene Ontology	<a href="#">Hyperlink</a>
Gene Summary	The protein encoded by this gene interacts with calcineurin A and inhibits calcineurin-dependent signaling pathways, possibly affecting central nervous system development. This gene is located in the minimal candidate region for the Down syndrome phenotype, and is overexpressed in the brain of Down syndrome fetuses. Chronic overexpression of this gene may lead to neurofibrillary tangles such as those associated with Alzheimer disease. Three transcript variants encoding three different isoforms have been found for this gene. [provided by RefSeq]
Other Designations	Down syndrome candidate region 1 Down syndrome critical region gene 1 calcipressin 1 calcium and oxidant-inducible mRNA modulatory calcineurin-interacting protein 1 myocyte-enriched calcineurin-interacting protein 1 near DSCR proline-rich protein

## Publication Reference

- [Vascular endothelial growth factor- and thrombin-induced termination factor, Down syndrome critical region-1, attenuates endothelial cell proliferation and angiogenesis.](#)

Minami T, Horiuchi K, Miura M, Abid MR, Takabe W, Noguchi N, Kohro T, Ge X, Aburatani H, Hamakubo T, Kodama T, Aird WC.

The Journal of Biological Chemistry 2004 Nov; 279(48):50537.

- [VEGF selectively induces Down syndrome critical region 1 gene expression in endothelial cells: a mechanism for feedback regulation of angiogenesis?](#)

Yao YG, Duh EJ.

Biochemical and Biophysical Research Communications 2004 Aug; 321(3):648.

Application: WB, Human, HUVECs

- [Multiple oxidative stress-response members of the Adapt78 family.](#)

Michtalik HJ, Narayan AV, Bhatt N, Lin HY, Mulligan MT, Zhang SL, Crawford DR.

Free Radical Biology & Medicine 2004 Aug; 37(4):454.

Application: WB, Human, HeLa, U251 cells

## Disease

- [Cognition](#)
- [Genetic Predisposition to Disease](#)
- [Schizophrenia](#)
- [Tobacco Use Disorder](#)