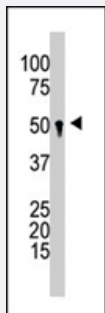


# GCNT1 polyclonal antibody

Catalog # PAB4302

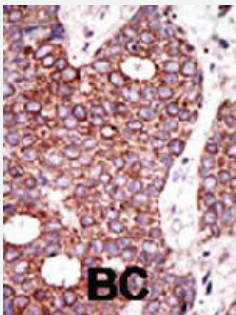
Size 400 uL

## Applications



### Western Blot (Cell lysate)

Western blot analysis of GCNT1 polyclonal antibody (Cat # PAB4302) in CEM cell line lysates (35 ug/lane). GCNT1 (arrow) was detected using the purified GCNT1 polyclonal antibody (Cat # PAB4302).



### Immunohistochemistry (Formalin/PFA-fixed paraffin-embedded sections)

Formalin-fixed and paraffin-embedded human cancer tissue reacted with GCNT1 polyclonal antibody (Cat # PAB4302) , which was peroxidase-conjugated to the secondary antibody, followed by DAB staining . This data demonstrates the use of this antibody for immunohistochemistry; clinical relevance has not been evaluated . BC = breast carcinoma .

## Specification

Product Description	Rabbit polyclonal antibody raised against synthetic peptide of GCNT1.
Immunogen	A synthetic peptide (conjugated with KLH) corresponding to C-terminus of human GCNT1.
Host	Rabbit
Reactivity	Human
Form	Liquid
Purification	Protein G purification

<b>Recommend Usage</b>	ELISA (1:1000) Western Blot (1:100-500) Immunohistochemistry (1:50-100) The optimal working dilution should be determined by the end user.
<b>Storage Buffer</b>	In PBS (0.09% sodium azide)
<b>Storage Instruction</b>	Store at 4°C. For long term storage store at -20°C. Aliquot to avoid repeated freezing and thawing.
<b>Note</b>	This product contains sodium azide: a POISONOUS AND HAZARDOUS SUBSTANCE which should be handled by trained staff only.

## Applications

- Western Blot (Cell lysate)

Western blot analysis of GCNT1 polyclonal antibody (Cat # PAB4302) in CEM cell line lysates (35 ug/lane). GCNT1 (arrow) was detected using the purified GCNT1 polyclonal antibody (Cat # PAB4302).

- Immunohistochemistry (Formalin/PFA-fixed paraffin-embedded sections)

Formalin-fixed and paraffin-embedded human cancer tissue reacted with GCNT1 polyclonal antibody (Cat # PAB4302), which was peroxidase-conjugated to the secondary antibody, followed by DAB staining. This data demonstrates the use of this antibody for immunohistochemistry; clinical relevance has not been evaluated. BC = breast carcinoma.

- Enzyme-linked Immunoabsorbent Assay

## Gene Info — GCNT1

<b>Entrez GeneID</b>	<a href="#">2650</a>
<b>Protein Accession#</b>	<a href="#">G6NT_HUMAN</a>
<b>Gene Name</b>	GCNT1
<b>Gene Alias</b>	C2GNT, C2GNT-L, C2GNT1, G6NT, MGC126335, MGC126336, NACGT2, NAGCT2
<b>Gene Description</b>	glucosaminyl (N-acetyl) transferase 1, core 2 (beta-1,6-N-acetylglucosaminyltransferase)
<b>Omim ID</b>	<a href="#">600391</a>
<b>Gene Ontology</b>	<a href="#">Hyperlink</a>

**Gene Summary**

This gene is a member of the beta-1,6-N-acetylglucosaminyltransferase gene family. It is essential to the formation of Gal beta 1-3(GlcNAc beta 1-6)GalNAc structures and the core 2 O-glycan branch. The gene coding this enzyme was originally mapped to 9q21, but was later localized to 9q13. Multiple alternatively spliced variants, encoding the same protein, have been identified. [provided by RefSeq]

**Other Designations**

OTTHUMP00000021502|beta-1,3-galactosyl-O-glycosyl-glycoprotein beta-1,6-N-acetylglucosaminyltransferase|beta-1,6-N-acetylglucosaminyltransferase|core 2 GnT|core 2 beta-1,6-N-acetylglucosaminyltransferase |core 2 branching enzyme

**Publication Reference**

- [Genomic organization of core 2 and I branching beta-1,6-N-acetylglucosaminyltransferases. Implication for evolution of the beta-1,6-N-acetylglucosaminyltransferase gene family.](#)

Bierhuizen MF, Maemura K, Kudo S, Fukuda M.

Glycobiology 1995 Jun; 5(4):417.

Application: WB-Ce, WB-Tr, Human, Mammalian cells

- [Expression cloning of a cDNA encoding UDP-GlcNAc:Gal beta 1-3-GalNAc-R \(GlcNAc to GalNAc\) beta 1-6GlcNAc transferase by gene transfer into CHO cells expressing polyoma large tumor antigen.](#)

Bierhuizen MF, Fukuda M.

PNAS 1992 Oct; 89(19):9326.

**Pathway**

- [Metabolic pathways](#)
- [O-Glycan biosynthesis](#)