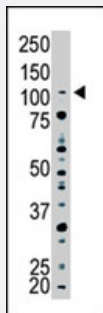


USP15 polyclonal antibody

Catalog # PAB4201 Size 400 uL

Applications



Western Blot (Tissue lysate)

The USP15 polyclonal antibody (Cat # PAB4201) is used in Western blot to detect USP15 in mouse brain tissue lysate .

Specification

Product Description	Rabbit polyclonal antibody raised against synthetic peptide of USP15.
Immunogen	A synthetic peptide (conjugated with KLH) corresponding to N-terminus of human USP15.
Host	Rabbit
Reactivity	Human, Mouse
Form	Liquid
Purification	Protein G purification
Recommend Usage	ELISA (1:1000) Western Blot (1:100-500) The optimal working dilution should be determined by the end user.
Storage Buffer	In PBS (0.09% sodium azide)
Storage Instruction	Store at 4°C. For long term storage store at -20°C. Aliquot to avoid repeated freezing and thawing.
Note	This product contains sodium azide: a POISONOUS AND HAZARDOUS SUBSTANCE which should be handled by trained staff only.

Applications

- Western Blot (Tissue lysate)

The USP15 polyclonal antibody (Cat # PAB4201) is used in Western blot to detect USP15 in mouse brain tissue lysate .

- Enzyme-linked Immunoabsorbent Assay

Gene Info — USP15

Entrez GeneID	9958
Protein Accession#	UB15_HUMAN
Gene Name	USP15
Gene Alias	KIAA0529, MGC131982, MGC149838, MGC74854, UNPH4
Gene Description	ubiquitin specific peptidase 15
Omim ID	604731
Gene Ontology	Hyperlink
Gene Summary	Ubiquitin (MIM 191339), a highly conserved protein involved in the regulation of intracellular protein breakdown, cell cycle regulation, and stress response, is released from degraded proteins by disassembly of the polyubiquitin chains. The disassembly process is mediated by ubiquitin-specific proteases (USPs). Also see USP1 (MIM 603478).[supplied by OMIM]
Other Designations	deubiquitinating enzyme ubiquitin specific protease 15

Disease

- [Tobacco Use Disorder](#)