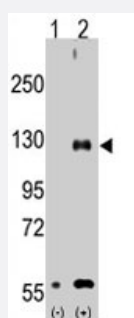


# TRPM8 polyclonal antibody

Catalog # PAB4072

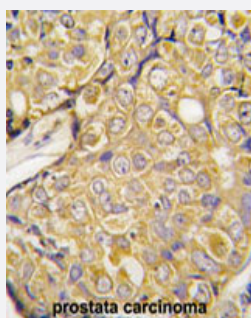
Size 400 uL

## Applications



### Western Blot (Transfected lysate)

Western blot analysis of TRPM8 (arrow) using rabbit TRPM8 polyclonal antibody (Cat # PAB4072). 293 cell lysate (2 ug/lane) either nontransfected (Lane 1) or transiently transfected with the TRPM8 gene (Lane 2) (Origene Technologies).



### Immunohistochemistry (Formalin/PFA-fixed paraffin-embedded sections)

Formalin-fixed and paraffin-embedded human prostate carcinoma tissue reacted with TRPM8 polyclonal antibody (Cat # PAB4072), which was peroxidase-conjugated to the secondary antibody, followed by DAB staining. This data demonstrates the use of this antibody for immunohistochemistry; clinical relevance has not been evaluated.

## Specification

<b>Product Description</b>	Rabbit polyclonal antibody raised against synthetic peptide of TRPM8.
<b>Immunogen</b>	A synthetic peptide (conjugated with KLH) corresponding to internal region of human TRPM8.
<b>Host</b>	Rabbit
<b>Reactivity</b>	Human
<b>Form</b>	Liquid
<b>Purification</b>	Ammonium sulfate precipitation

<b>Recommend Usage</b>	ELISA (1:1000) Western Blot (1:50-100) Immunohistochemistry (1:10-50) The optimal working dilution should be determined by the end user.
<b>Storage Buffer</b>	In PBS (0.09% sodium azide)
<b>Storage Instruction</b>	Store at 4°C. For long term storage store at -20°C. Aliquot to avoid repeated freezing and thawing.
<b>Note</b>	This product contains sodium azide: a POISONOUS AND HAZARDOUS SUBSTANCE which should be handled by trained staff only.

## Applications

- Western Blot (Transfected lysate)

Western blot analysis of TRPM8 (arrow) using rabbit TRPM8 polyclonal antibody (Cat # PAB4072). 293 cell lysate (2 ug/lane) either nontransfected (Lane 1) or transiently transfected with the TRPM8 gene (Lane 2) (Origene Technologies).

- Immunohistochemistry (Formalin/PFA-fixed paraffin-embedded sections)

Formalin-fixed and paraffin-embedded human prostate carcinoma tissue reacted with TRPM8 polyclonal antibody (Cat # PAB4072), which was peroxidase-conjugated to the secondary antibody, followed by DAB staining.  
This data demonstrates the use of this antibody for immunohistochemistry; clinical relevance has not been evaluated.

- Enzyme-linked Immunoabsorbent Assay

## Gene Info — TRPM8

<b>Entrez GeneID</b>	<a href="#">79054</a>
<b>Protein Accession#</b>	<a href="#">NP_076985;Q7Z2W7</a>
<b>Gene Name</b>	TRPM8
<b>Gene Alias</b>	LTRPC6, MGC2849, TRPP8
<b>Gene Description</b>	transient receptor potential cation channel, subfamily M, member 8
<b>Omim ID</b>	<a href="#">606678</a>
<b>Gene Ontology</b>	<a href="#">Hyperlink</a>
<b>Gene Summary</b>	subfamily M

## Other Designations

OTTHUMP00000065206|short form of the TRPM8 cationic channel|transient receptor potential subfamily M member 8

## Publication Reference

- [Characterisation of TRPM8 as a pharmacophore receptor.](#)

Bodding M, Wissenbach U, Flockerzi V.

Cell Calcium 2007 Dec; 42(6):618.

Application: WB-Tr, Human, HEK 293 cells

- [Identification of an HLA-A\\*0201-restricted T-cell epitope derived from the prostate cancer-associated protein trp-p8.](#)

Kiessling A, Fussel S, Schmitz M, Stevanovic S, Meye A, Weigle B, Klenk U, Wirth MP, Rieber EP.

Prostate 2003 Sep; 56(4):270.

- [Trp-p8, a novel prostate-specific gene, is up-regulated in prostate cancer and other malignancies and shares high homology with transient receptor potential calcium channel proteins.](#)

Tsavalier L, Shapero MH, Morkowski S, Laus R.

Cancer Research 2001 May; 61(9):3760.

## Disease

- [Cardiovascular Diseases](#)
- [Diabetes Mellitus](#)
- [Edema](#)