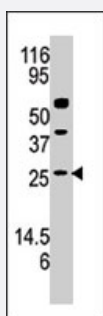


AK3L1 polyclonal antibody

Catalog # PAB3989

Size 400 uL

Applications



Western Blot (Tissue lysate)

Western blot analysis of AK3L1 polyclonal antibody (Cat # PAB3989) in mouse kidney tissue lysate (35 ug/lane). AK3L1 (arrow) was detected using the purified polyclonal antibody (1 : 50dilution).

Specification

Product Description	Rabbit polyclonal antibody raised against synthetic peptide of AK3L1.
Immunogen	A synthetic peptide (conjugated with KLH) corresponding to N-terminus of human AK3L1.
Host	Rabbit
Reactivity	Human
Form	Liquid
Purification	Protein G purification
Recommend Usage	ELISA (1:1000) Western Blot (1:100-500) The optimal working dilution should be determined by the end user.
Storage Buffer	In PBS (0.09% sodium azide)
Storage Instruction	Store at 4°C. For long term storage store at -20°C. Aliquot to avoid repeated freezing and thawing.
Note	This product contains sodium azide: a POISONOUS AND HAZARDOUS SUBSTANCE which should be handled by trained staff only.

Applications

- Western Blot (Tissue lysate)

Western blot analysis of AK3L1 polyclonal antibody (Cat # PAB3989) in mouse kidney tissue lysate (35 ug/lane). AK3L1 (arrow) was detected using the purified polyclonal antibody (1 : 50dilution).

- Enzyme-linked Immunoabsorbent Assay

Gene Info — AK3L1

Entrez GeneID	205
Protein Accession#	NP_037542;NP_001005353;NP_982289;P27144
Gene Name	AK3L1
Gene Alias	AK3, AK4, MGC166959
Gene Description	adenylate kinase 3-like 1
Omim ID	103030
Gene Ontology	Hyperlink
Gene Summary	<p>This gene encodes a member of the adenylate kinase family of enzymes. The encoded protein is localized to the mitochondrial matrix. Adenylate kinases regulate the adenine and guanine nucleotide compositions within a cell by catalyzing the reversible transfer of phosphate group among these nucleotides. Five isozymes of adenylate kinase have been identified in vertebrates. Expression of these isozymes is tissue-specific and developmentally regulated. A pseudogene for this gene has been located on chromosome 17. Three transcript variants encoding the same protein have been identified for this gene. Sequence alignment suggests that the gene defined by NM_013410, NM_203464, and NM_001005353 is located on chromosome 1. [provided by RefSeq]</p>
Other Designations	ATP-AMP transphosphorylase GTP:AMP phosphotransferase OTTHUMP00000010594 mitochondrial adenylate kinase-3 nucleoside-triphosphate-adenylate kinase

Publication Reference

- [Structure and expression of human mitochondrial adenylate kinase targeted to the mitochondrial matrix.](#)

Noma T, Fujisawa K, Yamashiro Y, Shinohara M, Nakazawa A, Gondo T, Ishihara T, Yoshinobu K.

The Biochemical Journal 2001 Aug; 358(Pt 1):225.

Application: WB-Ce, WB-Ti, WB-Tr, Human, Mouse, Brains, Hearts, HEK 293 cells, Kidneys, Livers, Skeletal muscles

- [Identification of a novel human adenylate kinase. cDNA cloning, expression analysis, chromosome localization and characterization of the recombinant protein.](#)

Van Rompay AR, Johansson M, Karlsson A.

European Journal of Biochemistry 1999 Apr; 261(2):509.

- [Identification of a novel adenylate kinase system in the brain: cloning of the fourth adenylate kinase.](#)

Yoneda T, Sato M, Maeda M, Takagi H.

Brain Research. Molecular Brain Research 1998 Nov; 62(2):187.

Pathway

- [Metabolic pathways](#)
- [Purine metabolism](#)

Disease

- [Tobacco Use Disorder](#)