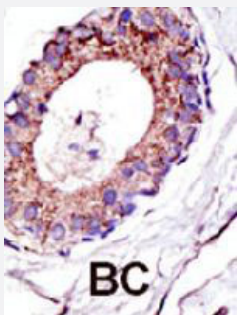


UBE2D1 polyclonal antibody

Catalog # PAB3892

Size 400 uL

Applications



Immunohistochemistry (Formalin/PFA-fixed paraffin-embedded sections)

Formalin-fixed and paraffin-embedded human cancer tissue reacted with UBE2D1 polyclonal antibody (Cat # PAB3892), which was peroxidase-conjugated to the secondary antibody, followed by DAB staining. This data demonstrates the use of this antibody for immunohistochemistry; clinical relevance has not been evaluated. BC = breast carcinoma; HC = hepatocarcinoma.

Specification

Product Description	Rabbit polyclonal antibody raised against synthetic peptide of UBE2D1.
Immunogen	A synthetic peptide (conjugated with KLH) corresponding to C-terminus of human UBE2D1.
Host	Rabbit
Reactivity	Human, Mouse
Form	Liquid
Purification	Protein G purification
Recommend Usage	Immunohistochemistry (Formalin/PFA-fixed paraffin-embedded sections) (1:50-100) Western Blot (1:1000) The optimal working dilution should be determined by the end user.
Storage Buffer	In PBS (0.09% sodium azide)
Storage Instruction	Store at 4°C. For long term storage store at -20°C. Aliquot to avoid repeated freezing and thawing.

Note

This product contains sodium azide: a POISONOUS AND HAZARDOUS SUBSTANCE which should be handled by trained staff only.

Applications

- Western Blot
- Immunohistochemistry (Formalin/PFA-fixed paraffin-embedded sections)

Formalin-fixed and paraffin-embedded human cancer tissue reacted with UBE2D1 polyclonal antibody (Cat # PAB3892), which was peroxidase-conjugated to the secondary antibody, followed by DAB staining. This data demonstrates the use of this antibody for immunohistochemistry; clinical relevance has not been evaluated. BC = breast carcinoma; HC = hepatocarcinoma.

Gene Info — UBE2D1

Entrez GeneID [7321](#)

Protein Accession# [UB5A_HUMAN](#)

Gene Name UBE2D1

Gene Alias E2(17)KB1, SFT, UBC4/5, UBCH5, UBCH5A

Gene Description ubiquitin-conjugating enzyme E2D 1 (UBC4/5 homolog, yeast)

Omim ID [602961](#)

Gene Ontology [Hyperlink](#)

Gene Summary The modification of proteins with ubiquitin is an important cellular mechanism for targeting abnormal or short-lived proteins for degradation. Ubiquitination involves at least three classes of enzymes: ubiquitin-activating enzymes, or E1s, ubiquitin-conjugating enzymes, or E2s, and ubiquitin-protein ligases, or E3s. This gene encodes a member of the E2 ubiquitin-conjugating enzyme family. This enzyme is closely related to a stimulator of iron transport (SFT), and is up-regulated in hereditary hemochromatosis. It also functions in the ubiquitination of the tumor-suppressor protein p53 and the hypoxia-inducible transcription factor HIF1alpha by interacting with the E1 ubiquitin-activating enzyme and the E3 ubiquitin-protein ligases. [provided by RefSeq]

Other Designations OTTHUMP00000019631|stimulator of Fe transport|ubiquitin carrier protein|ubiquitin-conjugating enzyme E2-17 kDa 1|ubiquitin-conjugating enzyme E2D 1

Publication Reference

- [A non-proteolytic role for ubiquitin in Tat-mediated transactivation of the HIV-1 promoter.](#)

Bres V, Kiernan RE, Linares LK, Chable-Bessia C, Plechakova O, Treand C, Emiliani S, Peloponese JM, Jeang KT, Coux O, Scheffner M, Benkirane M.

Nature Cell Biology 2003 Aug; 5(8):754.

- [UbcH5A, a member of human E2 ubiquitin-conjugating enzymes, is closely related to SFT, a stimulator of iron transport, and is up-regulated in hereditary hemochromatosis.](#)

Gehrke SG, Riedel HD, Herrmann T, Hadaschik B, Bents K, Veltkamp C, Stremmel W.

Blood 2003 Apr; 101(8):3288.

- [Activation of HIF1alpha ubiquitination by a reconstituted von Hippel-Lindau \(VHL\) tumor suppressor complex.](#)

Kamura T, Sato S, Iwai K, Czyzyk-Krzeska M, Conaway RC, Conaway JW.

PNAS 2000 Sep; 97(19):10430.

Pathway

- [Ubiquitin mediated proteolysis](#)

Disease

- [Alzheimer disease](#)
- [Genetic Predisposition to Disease](#)