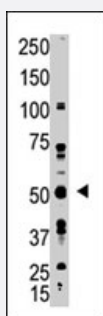


GDF10 polyclonal antibody

Catalog # PAB3881

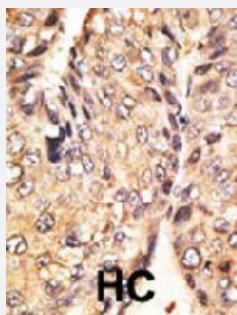
Size 400 uL

Applications



Western Blot (Cell lysate)

The GDF10 polyclonal antibody (Cat # PAB3881) is used in Western blot to detect GDF10 in A-375 cell lysate.



Immunohistochemistry (Formalin/PFA-fixed paraffin-embedded sections)

Formalin-fixed and paraffin-embedded human cancer tissue reacted with GDF10 polyclonal antibody (Cat # PAB3881), which was peroxidase-conjugated to the secondary antibody, followed by DAB staining. This data demonstrates the use of this antibody for immunohistochemistry; clinical relevance has not been evaluated. BC = breast carcinoma; HC = hepatocarcinoma.

Specification

Product Description	Rabbit polyclonal antibody raised against synthetic peptide of GDF10.
Immunogen	A synthetic peptide (conjugated with KLH) corresponding to N-terminus of human GDF10.
Host	Rabbit
Reactivity	Human
Form	Liquid
Purification	Protein G purification

Recommend Usage	Immunohistochemistry (Formalin/PFA-fixed paraffin-embedded sections) (1:50-100) Western Blot (1:1000) The optimal working dilution should be determined by the end user.
Storage Buffer	In PBS (0.09% sodium azide)
Storage Instruction	Store at 4°C. For long term storage store at -20°C. Aliquot to avoid repeated freezing and thawing.
Note	This product contains sodium azide: a POISONOUS AND HAZARDOUS SUBSTANCE which should be handled by trained staff only.

Applications

- Western Blot (Cell lysate)

The GDF10 polyclonal antibody (Cat # PAB3881) is used in Western blot to detect GDF10 in A-375 cell lysate.

- Immunohistochemistry (Formalin/PFA-fixed paraffin-embedded sections)

Formalin-fixed and paraffin-embedded human cancer tissue reacted with GDF10 polyclonal antibody (Cat # PAB3881), which was peroxidase-conjugated to the secondary antibody, followed by DAB staining. This data demonstrates the use of this antibody for immunohistochemistry; clinical relevance has not been evaluated. BC = breast carcinoma; HC = hepatocarcinoma.

Gene Info — GDF10

Entrez GeneID	2662
Protein Accession#	NP_004953
Gene Name	GDF10
Gene Alias	BMP-3b, BMP3B
Gene Description	growth differentiation factor 10
Omim ID	601361
Gene Ontology	Hyperlink
Gene Summary	The protein encoded by this gene is a member of the bone morphogenetic protein (BMP) family and the TGF-beta superfamily. This group of proteins is characterized by a polybasic proteolytic processing site which is cleaved to produce a mature protein containing seven conserved cysteine residues. The members of this family are regulators of cell growth and differentiation in both embryonic and adult tissues. Studies in mice suggest that the protein encoded by this gene plays a role in skeletal morphogenesis. [provided by RefSeq]
Other Designations	OTTHUMP00000019534 bone morphogenetic protein 3B

Publication Reference

- [The family of bone morphogenetic proteins.](#)

Ducy P, Karsenty G.

Kidney International 2000 Jun; 57(6):2207.

- [cDNA cloning and genomic structure of human bone morphogenetic protein-3B \(BMP-3b\).](#)

Hino J, Takao M, Takeshita N, Konno Y, Nishizawa T, Matsuo H, Kangawa K.

Biochemical and Biophysical Research Communications 1996 Jun; 223(2):304.

- [Growth/differentiation factor-10: a new member of the transforming growth factor-beta superfamily related to bone morphogenetic protein-3.](#)

Cunningham NS, Jenkins NA, Gilbert DJ, Copeland NG, Reddi AH, Lee SJ.

Growth Factors (Chur, Switzerland) 1995 Jan; 12(2):99.

Application: WB-Ce, WB-Tr, Human, Mammalian cells

Disease

- [Alzheimer Disease](#)
- [Genetic Predisposition to Disease](#)
- [Obesity](#)
- [Ovarian Failure](#)
- [Polycystic Ovary Syndrome](#)
- [Puberty](#)
- [Thrombophilia](#)
- [Tobacco Use Disorder](#)