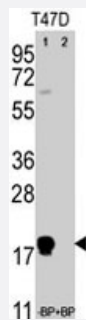


# THY1 polyclonal antibody

Catalog # PAB3877

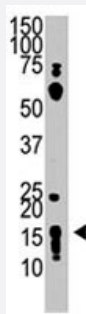
Size 400 uL

## Applications



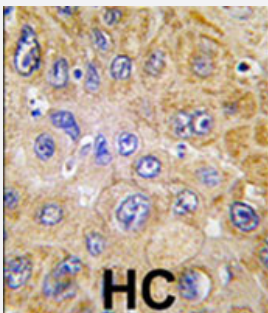
### Western Blot (Cell lysate)

Western blot analysis of THY1 polyclonal antibody (Cat # PAB3877) pre-incubated without (lane 1) and with (lane 2) blocking peptide in T-47D cell line lysate. THY1 (N-term) (arrow) was detected using the purified polyclonal antibody (1:1000 dilution).



### Western Blot (Cell lysate)

The THY1 polyclonal antibody (Cat # PAB3877) is used in Western blot to detect THY1 in HL-60 cell lysate.



### Immunohistochemistry (Formalin/PFA-fixed paraffin-embedded sections)

Formalin-fixed and paraffin-embedded human hepatocellular carcinoma reacted with THY1 polyclonal antibody (Cat # PAB3877), which was peroxidase-conjugated to the secondary antibody, followed by DAB staining. This data demonstrates the use of this antibody for immunohistochemistry; clinical relevance has not been evaluated.

## Specification

### Product Description

Rabbit polyclonal antibody raised against synthetic peptide of THY1.

### Immunogen

A synthetic peptide (conjugated with KLH) corresponding to N-terminus of human THY1.

Host	Rabbit
Reactivity	Human
Form	Liquid
Purification	Protein G purification
Recommend Usage	Immunohistochemistry (Formalin/PFA-fixed paraffin-embedded sections) (1:50-100) Western Blot (1:1000) The optimal working dilution should be determined by the end user.
Storage Buffer	In PBS (0.09% sodium azide)
Storage Instruction	Store at 4°C. For long term storage store at -20°C. Aliquot to avoid repeated freezing and thawing.
Note	This product contains sodium azide: a POISONOUS AND HAZARDOUS SUBSTANCE which should be handled by trained staff only.

## Applications

- Western Blot (Cell lysate)

Western blot analysis of THY1 polyclonal antibody (Cat # PAB3877) pre-incubated without (lane 1) and with (lane 2) blocking peptide in T-47D cell line lysate. THY1 (N-term) (arrow) was detected using the purified polyclonal antibody (1:1000 dilution).

- Western Blot (Cell lysate)

The THY1 polyclonal antibody (Cat # PAB3877) is used in Western blot to detect THY1 in HL-60 cell lysate.

- Immunohistochemistry (Formalin/PFA-fixed paraffin-embedded sections)

Formalin-fixed and paraffin-embedded human hepatocellular carcinoma reacted with THY1 polyclonal antibody (Cat # PAB3877), which was peroxidase-conjugated to the secondary antibody, followed by DAB staining. This data demonstrates the use of this antibody for immunohistochemistry; clinical relevance has not been evaluated.

## Gene Info — THY1

Entrez GeneID	<a href="#">7070</a>
Protein Accession#	<a href="#">NP_006279:P04216</a>
Gene Name	THY1
Gene Alias	CD90, FLJ33325
Gene Description	Thy-1 cell surface antigen

Omim ID	<a href="#">188230</a>
Gene Ontology	<a href="#">Hyperlink</a>
Other Designations	Thy-1 T-cell antigen Thy-1 membrane glycoprotein

## Publication Reference

- [Thy-1 expression in human fibroblast subsets defines myofibroblastic or lipofibroblastic phenotypes.](#)

Koumas L, Smith TJ, Feldon S, Blumberg N, Phipps RP.  
The American Journal of Pathology 2003 Oct; 163(4):1291.

Application: IF, Human, Human parental myometrial and orbital fibroblast strains

- [THY1 expression is associated with tumor suppression of human ovarian cancer.](#)

Abeyasinghe HR, Cao Q, Xu J, Pollock S, Veyberman Y, Guckert NL, Keng P, Wang N.  
Cancer Genetics and Cytogenetics 2003 Jun; 143(2):125.

Application: Flow Cyt, Human, Caov-3, GR, HOC8, MLS/P, OVCAR-3, OW-1, SK-OV-3 cells

- [The Thy-1/Thy-1 ligand interaction is involved in binding of melanoma cells to activated Thy-1- positive microvascular endothelial cells.](#)

Saalbach A, Hildebrandt G, Haustein UF, Anderegg U.  
Microvascular Research 2002 Jul; 64(1):86.

Application: Flow Cyt, IHC-Fr, Human, Melanoma, HDMECs

## Pathway

- [Leukocyte transendothelial migration](#)

## Disease

- [Celiac Disease](#)
- [Genetic Predisposition to Disease](#)