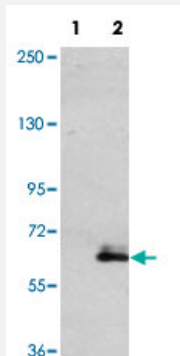


MAP2 polyclonal antibody

Catalog # PAB3854

Size 400 uL

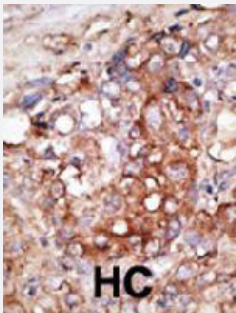
Applications



Western Blot (Transfected lysate)

Western blot analysis of MAP2 (arrow) using MAP2 polyclonal antibody (Cat # PAB3854).

293 cell lysates (2 ug/lane) either nontransfected (Lane 1) or transiently transfected with the MAP2 gene (Lane 2).



Immunohistochemistry (Formalin/PFA-fixed paraffin-embedded sections)

Formalin-fixed and paraffin-embedded human hepatocellular carcinoma tissue reacted with MAP2 polyclonal antibody (Cat # PAB3854), which was peroxidase-conjugated to the secondary antibody, followed by DAB staining. This data demonstrates the use of this antibody for immunohistochemistry; clinical relevance has not been evaluated. BC = breast carcinoma; HC = hepatocarcinoma.

Specification

Product Description	Rabbit polyclonal antibody raised against synthetic peptide of MAP2.
Immunogen	A synthetic peptide (conjugated with KLH) corresponding to C-terminus of human MAP2.
Host	Rabbit
Reactivity	Human
Form	Liquid
Purification	Protein G purification

Recommend Usage	Immunohistochemistry (Formalin/PFA-fixed paraffin-embedded sections) (1:50-100) Western Blot (1:1000) The optimal working dilution should be determined by the end user.
Storage Buffer	In PBS (0.09% sodium azide)
Storage Instruction	Store at 4°C. For long term storage store at -20°C. Aliquot to avoid repeated freezing and thawing.
Note	This product contains sodium azide: a POISONOUS AND HAZARDOUS SUBSTANCE which should be handled by trained staff only.

Applications

- Western Blot (Transfected lysate)

Western blot analysis of MAP2 (arrow) using MAP2 polyclonal antibody (Cat # PAB3854).
293 cell lysates (2 ug/lane) either nontransfected (Lane 1) or transiently transfected with the MAP2 gene (Lane 2).

- Immunohistochemistry (Formalin/PFA-fixed paraffin-embedded sections)

Formalin-fixed and paraffin-embedded human hepatocellular carcinoma tissue reacted with MAP2 polyclonal antibody (Cat # PAB3854), which was peroxidase-conjugated to the secondary antibody, followed by DAB staining. This data demonstrates the use of this antibody for immunohistochemistry; clinical relevance has not been evaluated. BC = breast carcinoma; HC = hepatocarcinoma.

Gene Info — MAP2

Entrez GeneID	4133
Protein Accession#	NP_114033:P11137
Gene Name	MAP2
Gene Alias	DKFZp686l2148, MAP2A, MAP2B, MAP2C
Gene Description	microtubule-associated protein 2
Omim ID	157130
Gene Ontology	Hyperlink

Gene Summary

This gene encodes a protein that belongs to the microtubule-associated protein family. The proteins of this family are thought to be involved in microtubule assembly, which is an essential step in neurogenesis. The products of similar genes in rat and mouse are neuron-specific cytoskeletal proteins that are enriched in dendrites, implicating a role in determining and stabilizing dendritic shape during neuron development. A number of alternatively spliced variants encoding distinct isoforms have been described. [provided by RefSeq]

Other Designations

OTTHUMP00000163916

Publication Reference

- [Comparative distribution of tau phosphorylated at Ser262 in pre-tangles and tangles.](#)

Lauckner J, Frey P, Geula C.

Neurobiology of Aging 2003 Oct; 24(6):767.

- [Specific binding of dehydroepiandrosterone to the N terminus of the microtubule-associated protein MAP2.](#)

Laurine E, Lafitte D, Gregoire C, Seree E, Loret E, Douillard S, Michel B, Briand C, Verdier JM.

The Journal of Biological Chemistry 2003 Aug; 278(32):29979.

Application: WB-Re, Recombinant protein

- [Diagnostic value of microtubule-associated protein-2 \(MAP-2\) for neuroendocrine neoplasms.](#)

Liu Y, Saad RS, Shen SS, Silverman JF.

Advances in Anatomic Pathology 2003 Mar; 10(2):101.

Application: IHC, Human, Carcinoid tumor, Large cell neuroendocrine carcinomas of lung, Melanoma

Disease

- [Cardiovascular Diseases](#)
- [Diabetes Mellitus](#)
- [Edema](#)
- [Tobacco Use Disorder](#)