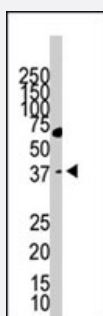


# LYVE1 polyclonal antibody

Catalog # PAB3848

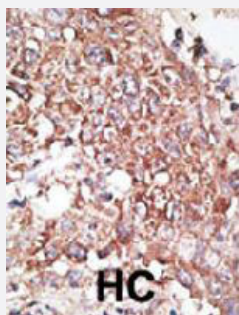
Size 400 uL

## Applications



### Western Blot (Cell lysate)

Western blot analysis of LYVE1 polyclonal antibody (Cat # PAB3848) in Y-79 cell lysate. LYVE1 (Arrow) was detected using purified polyclonal antibody. Secondary HRP-anti-rabbit was used for signal visualization with chemiluminescence.



### Immunohistochemistry (Formalin/PFA-fixed paraffin-embedded sections)

Formalin-fixed and paraffin-embedded human hepatocellular carcinoma tissue reacted with LYVE1 polyclonal antibody (Cat # PAB3848), which was peroxidase-conjugated to the secondary antibody, followed by DAB staining. This data demonstrates the use of this antibody for immunohistochemistry; clinical relevance has not been evaluated. BC = breast carcinoma; HC = hepatocarcinoma.

## Specification

Product Description	Rabbit polyclonal antibody raised against synthetic peptide of LYVE1.
Immunogen	A synthetic peptide (conjugated with KLH) corresponding to C-terminus of human LYVE1.
Host	Rabbit
Reactivity	Human
Form	Liquid
Purification	Protein G purification

<b>Recommend Usage</b>	Immunohistochemistry (Formalin/PFA-fixed paraffin-embedded sections) (1:50-100) Western Blot (1:1000) The optimal working dilution should be determined by the end user.
<b>Storage Buffer</b>	In PBS (0.09% sodium azide)
<b>Storage Instruction</b>	Store at 4°C. For long term storage store at -20°C. Aliquot to avoid repeated freezing and thawing.
<b>Note</b>	This product contains sodium azide: a POISONOUS AND HAZARDOUS SUBSTANCE which should be handled by trained staff only.

## Applications

- Western Blot (Cell lysate)

Western blot analysis of LYVE1 polyclonal antibody (Cat # PAB3848) in Y-79 cell lysate. LYVE1 (Arrow) was detected using purified polyclonal antibody. Secondary HRP-anti-rabbit was used for signal visualization with chemiluminescence.

- Immunohistochemistry (Formalin/PFA-fixed paraffin-embedded sections)

Formalin-fixed and paraffin-embedded human hepatocellular carcinoma tissue reacted with LYVE1 polyclonal antibody (Cat # PAB3848), which was peroxidase-conjugated to the secondary antibody, followed by DAB staining. This data demonstrates the use of this antibody for immunohistochemistry; clinical relevance has not been evaluated. BC = breast carcinoma; HC = hepatocarcinoma.

## Gene Info — LYVE1

<b>Entrez GeneID</b>	<a href="#">10894</a>
<b>Protein Accession#</b>	<a href="#">NP_006682</a>
<b>Gene Name</b>	LYVE1
<b>Gene Alias</b>	CRSBP-1, HAR, LYVE-1, XLKD1
<b>Gene Description</b>	lymphatic vessel endothelial hyaluronan receptor 1
<b>Omim ID</b>	<a href="#">605702</a>
<b>Gene Ontology</b>	<a href="#">Hyperlink</a>
<b>Gene Summary</b>	This gene encodes a type I integral membrane glycoprotein. The encoded protein acts as a receptor and binds to both soluble and immobilized hyaluronan. This protein may function in lymphatic hyaluronan transport and have a role in tumor metastasis. [provided by RefSeq]
<b>Other Designations</b>	cell surface retention sequence binding protein-1 extracellular link domain containing 1 extracellular link domain-containing 1 hyaluronic acid receptor

## Publication Reference

- [The lymphatics revisited: new perspectives from the hyaluronan receptor LYVE-1.](#)

Jackson DG.

Trends in Cardiovascular Medicine 2003 Jan; 13(1):1.

Application: Flow Cyt, IHC, Human, Breast carcinoma, Oropharyngeal carcinoma

- [Lymphangiogenesis quantification using quantitative PCR and breast cancer as a model.](#)

Cunnick GH, Jiang WG, Gomez KF, Mansel RE.

Biochemical and Biophysical Research Communications 2001 Nov; 288(4):1043.

## Disease

- [Lymphedema](#)