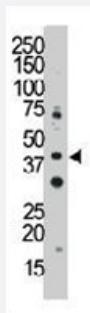


CD33 polyclonal antibody

Catalog # PAB3632

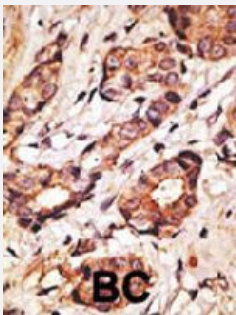
Size 400 uL

Applications



Western Blot (Cell lysate)

The CD33 polyclonal antibody (Cat # PAB3632) is used in Western blot to detect CD33 in Jurkat cell lysate.



Immunohistochemistry (Formalin/PFA-fixed paraffin-embedded sections)

Formalin-fixed and paraffin-embedded human cancer tissue reacted with CD33 polyclonal antibody (Cat # PAB3632) at a 1 : 50 dilution, which was peroxidase-conjugated to the secondary antibody, followed by AEC staining. This data demonstrates the use of this antibody for immunohistochemistry ; clinical relevance has not been evaluated. BC = breast carcinoma.

Specification

Product Description	Rabbit polyclonal antibody raised against synthetic peptide of CD33.
Immunogen	A synthetic peptide (conjugated with KLH) corresponding to N-terminus of human CD33.
Host	Rabbit
Reactivity	Human
Form	Liquid
Purification	Protein G purification

Recommend Usage	Immunohistochemistry (Formalin/PFA-fixed paraffin-embedded sections) (1:10-50) Western Blot (1:1000) The optimal working dilution should be determined by the end user.
Storage Buffer	In PBS (0.09% sodium azide)
Storage Instruction	Store at 4°C. For long term storage store at -20°C. Aliquot to avoid repeated freezing and thawing.
Note	This product contains sodium azide: a POISONOUS AND HAZARDOUS SUBSTANCE which should be handled by trained staff only.

Applications

- Western Blot (Cell lysate)

The CD33 polyclonal antibody (Cat # PAB3632) is used in Western blot to detect CD33 in Jurkat cell lysate.

- Immunohistochemistry (Formalin/PFA-fixed paraffin-embedded sections)

Formalin-fixed and paraffin-embedded human cancer tissue reacted with CD33 polyclonal antibody (Cat # PAB3632) at a 1 : 50 dilution, which was peroxidase-conjugated to the secondary antibody, followed by AEC staining. This data demonstrates the use of this antibody for immunohistochemistry ; clinical relevance has not been evaluated. BC = breast carcinoma.

Gene Info — CD33

Entrez GeneID	945
Protein Accession#	NP_001763:P20138
Gene Name	CD33
Gene Alias	FLJ00391, SIGLEC-3, SIGLEC3, p67
Gene Description	CD33 molecule
Omim ID	159590
Gene Ontology	Hyperlink
Other Designations	CD33 antigen CD33 antigen (gp67)

Publication Reference

- [Generation and initial analysis of more than 15,000 full-length human and mouse cDNA sequences.](#)

Strausberg RL, Feingold EA, Grouse LH, Derge JG, Klausner RD, Collins FS, Wagner L, Shenmen CM, Schuler GD, Altschul SF, Zeeberg B, Buetow KH, Schaefer CF, Bhat NK, Hopkins RF, Jordan H, Moore T, Max SI, Wang J, Hsieh F, Diatchenko L, Marusina K, Farmer AA, Rubin GM, Hong L, Stapleton M, Soares MB, Bonaldo MF, Casavant TL, Scheetz TE, Brownstein MJ, Ustin TB, Toshiyuki S, Caminci P, Prange C, Raha SS, Loquellano NA, Peters GJ, Abramson RD, Mullahy SJ, Bosak SA, McEwan PJ, McKernan KJ, Malek JA,

PNAS 2002 Dec; 99(26):16899.

- [Genomic organization of the siglec gene locus on chromosome 19q13.4 and cloning of two new siglec pseudogenes.](#)

Yousef GM, Ordon MH, Foussias G, Diamandis EP.

Gene 2002 Mar; 286(2):259.

- [Surface expression and function of p75/AIRM-1 or CD33 in acute myeloid leukemias: engagement of CD33 induces apoptosis of leukemic cells.](#)

Vitale C, Romagnani C, Puccetti A, Olive D, Costello R, Chiossone L, Pitto A, Bacigalupo A, Moretta L, Mingari MC.

PNAS 2001 May; 98(10):5764.

Application: Added, Recombinant protein

Pathway

- [Hematopoietic cell lineage](#)

Disease

- [Leukemia](#)
- [Neoplasm](#)
- [Tobacco Use Disorder](#)