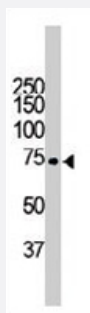


ITK polyclonal antibody

Catalog # PAB3429

Size 400 uL

Applications



Western Blot (Cell lysate)

The ITK polyclonal antibody (Cat # PAB3429) is used in Western blot to detect ITK in CEM cell lysate.

Specification

Product Description	Rabbit polyclonal antibody raised against synthetic peptide of ITK.
Immunogen	A synthetic peptide (conjugated with KLH) corresponding to internal region of human ITK.
Host	Rabbit
Reactivity	Human
Form	Liquid
Purification	Protein G purification
Recommend Usage	Western Blot (1:1000) The optimal working dilution should be determined by the end user.
Storage Buffer	In PBS (0.09% sodium azide)
Storage Instruction	Store at 4°C. For long term storage store at -20°C. Aliquot to avoid repeated freezing and thawing.
Note	This product contains sodium azide: a POISONOUS AND HAZARDOUS SUBSTANCE which should be handled by trained staff only.

Applications

- Western Blot (Cell lysate)

The ITK polyclonal antibody (Cat # PAB3429) is used in Western blot to detect ITK in CEM cell lysate.

Gene Info — ITK

Entrez GeneID	3702
Protein Accession#	ITK_HUMAN
Gene Name	ITK
Gene Alias	EMT, LYK, MGC126257, MGC126258, PSCTK2
Gene Description	IL2-inducible T-cell kinase
Omim ID	186973
Gene Ontology	Hyperlink
Gene Summary	This gene encodes an intracellular tyrosine kinase expressed in T-cells. The protein contains both SH2 and SH3 domains which are often found in intracellular kinases. It is thought to play a role in T-cell proliferation and differentiation. [provided by RefSeq]
Other Designations	homolog of mouse T-cell itk/tsk tyrosine-protein kinase ITK/TSK tyrosine-protein kinase LYK

Publication Reference

- [Regulation of the tyrosine kinase Itk by the peptidyl-prolyl isomerase cyclophilin A.](#)

Brazin KN, Mallis RJ, Fulton DB, Andreotti AH.

PNAS 2002 Feb; 99(4):1899.

Application: IP, KA, WB, Human, Jurkat cells

- [Characterization of Itk tyrosine kinase: contribution of noncatalytic domains to enzymatic activity.](#)

Hawkins J, Marcy A.

Protein Expression and Purification 2001 Jul; 22(2):211.

- [Mapping of the gene for the tyrosine kinase Itk to a region of conserved syntenic between mouse chromosome 11 and human chromosome 5q.](#)

Janis EM, Siliciano JD, Isaac DD, Griffin CA, Hawkins AL, Kozak CA, Desiderio S.

Genomics 1994 Sep; 23(1):269.

Application: WB-Ce, WB-Tr, Human, Mouse, Mouse T lymphoid cells

Pathway

- [Chemokine signaling pathway](#)
- [Leukocyte transendothelial migration](#)
- [T cell receptor signaling pathway](#)

Disease

- [Asthma](#)
- [Celiac Disease](#)
- [Eczema](#)
- [Genetic Predisposition to Disease](#)
- [Hypersensitivity](#)