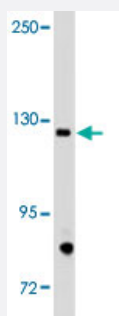


TIE1 polyclonal antibody

Catalog # PAB3397

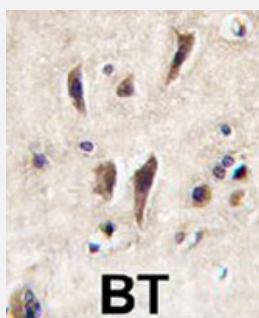
Size 400 uL

Applications



Western Blot (Tissue lysate)

Western blot analysis of TIE1 polyclonal antibody (Cat # PAB3397) in mouse brain lysate. TIE (arrow) was detected using purified polyclonal antibody. Secondary HRP-anti-rabbit was used for signal visualization with chemiluminescence.



Immunohistochemistry (Formalin/PFA-fixed paraffin-embedded sections)

Formalin-fixed and paraffin-embedded human brain tissue reacted with TIE1 polyclonal antibody (Cat # PAB3397), which was peroxidase-conjugated to the secondary antibody, followed by DAB staining. This data demonstrates the use of this antibody for immunohistochemistry; clinical relevance has not been evaluated.

Specification

Product Description

Rabbit polyclonal antibody raised against synthetic peptide of TIE1.

Immunogen

A synthetic peptide (conjugated with KLH) corresponding to N-terminus of human TIE1.

Host

Rabbit

Reactivity

Human, Mouse

Form

Liquid

Purification

Protein G purification

Recommend Usage	Immunohistochemistry (Formalin/PFA-fixed paraffin-embedded sections) (1:10-50) Western Blot (1:1000) The optimal working dilution should be determined by the end user.
Storage Buffer	In PBS (0.09% sodium azide)
Storage Instruction	Store at 4°C. For long term storage store at -20°C. Aliquot to avoid repeated freezing and thawing.
Note	This product contains sodium azide: a POISONOUS AND HAZARDOUS SUBSTANCE which should be handled by trained staff only.

Applications

- Western Blot (Tissue lysate)

Western blot analysis of TIE1 polyclonal antibody (Cat # PAB3397) in mouse brain lysate. TIE (arrow) was detected using purified polyclonal antibody. Secondary HRP-anti-rabbit was used for signal visualization with chemiluminescence.

- Immunohistochemistry (Formalin/PFA-fixed paraffin-embedded sections)

Formalin-fixed and paraffin-embedded human brain tissue reacted with TIE1 polyclonal antibody (Cat # PAB3397), which was peroxidase-conjugated to the secondary antibody, followed by DAB staining. This data demonstrates the use of this antibody for immunohistochemistry; clinical relevance has not been evaluated.

Gene Info — TIE1

Entrez GeneID	7075
Protein Accession#	P35590
Gene Name	TIE1
Gene Alias	JTK14, TIE
Gene Description	tyrosine kinase with immunoglobulin-like and EGF-like domains 1
Omim ID	600222
Gene Ontology	Hyperlink
Other Designations	OTTHUMP00000008352 receptor tyrosine kinase soluble TIE1 variant 1 soluble TIE1 variant 2 soluble TIE1 variant 3 soluble TIE1 variant 4 soluble TIE1 variant 5 tyrosine kinase with immunoglobulin and epidermal growth factor homology domains 1

Publication Reference

- [Corneal IL-8 expression following adenovirus infection is mediated by c-Src activation in human corneal fibroblasts.](#)
Natarajan K, Rajala MS, Chodosh J.
The Journal of Immunology 2003 Jun; 172(12):6234.
- [Tyrosine phosphorylation of I-kappa B kinase alpha/beta by protein kinase C-dependent c-Src activation is involved in TNF-alpha-induced cyclooxygenase-2 expression.](#)
Huang WC, Chen JJ, Inoue H, Chen CC.
Journal of Immunology 2003 May; 170(9):4767.
- [Functions of the activation loop in Csk protein-tyrosine kinase.](#)
Lin X, Lee S, Sun G.
The Journal of Biological Chemistry 2003 Jun; 278(26):24072.

Disease

- [Cardiovascular Diseases](#)
- [Diabetes Mellitus](#)
- [Edema](#)
- [Kidney Failure](#)
- [Liver Cirrhosis](#)