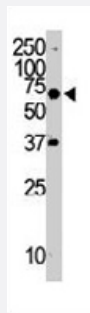


RYP polyclonal antibody

Catalog # PAB3389

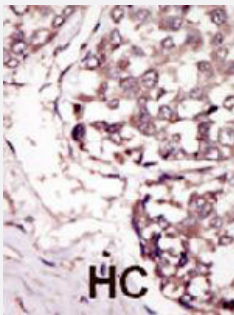
Size 400 uL

Applications



Western Blot (Cell lysate)

Western blot analysis of RYP polyclonal antibody (Cat # PAB3389) in Jurkat cell lysate. RYP (Arrow) was detected using purified polyclonal antibody. Secondary HRP-anti-rabbit was used for signal visualization with chemiluminescence.



Immunohistochemistry (Formalin/PFA-fixed paraffin-embedded sections)

Formalin-fixed and paraffin-embedded human hepatocellular carcinoma tissue reacted with RYP polyclonal antibody (Cat # PAB3389), which was peroxidase-conjugated to the secondary antibody, followed by DAB staining. This data demonstrates the use of this antibody for immunohistochemistry; clinical relevance has not been evaluated. HC = hepatocarcinoma.

Specification

Product Description	Rabbit polyclonal antibody raised against synthetic peptide of RYP.
Immunogen	A synthetic peptide (conjugated with KLH) corresponding to C-terminus of human RYP.
Host	Rabbit
Reactivity	Human
Form	Liquid
Purification	Protein G purification

Recommend Usage	Immunohistochemistry (Formalin/PFA-fixed paraffin-embedded sections) (1:50-100) Western Blot (1:1000) The optimal working dilution should be determined by the end user.
Storage Buffer	In PBS (0.09% sodium azide)
Storage Instruction	Store at 4°C. For long term storage store at -20°C. Aliquot to avoid repeated freezing and thawing.
Note	This product contains sodium azide: a POISONOUS AND HAZARDOUS SUBSTANCE which should be handled by trained staff only.

Applications

- Western Blot (Cell lysate)

Western blot analysis of RYK polyclonal antibody (Cat # PAB3389) in Jurkat cell lysate. RYK (Arrow) was detected using purified polyclonal antibody. Secondary HRP-anti-rabbit was used for signal visualization with chemiluminescence.

- Immunohistochemistry (Formalin/PFA-fixed paraffin-embedded sections)

Formalin-fixed and paraffin-embedded human hepatocellular carcinoma tissue reacted with RYK polyclonal antibody (Cat # PAB3389), which was peroxidase-conjugated to the secondary antibody, followed by DAB staining. This data demonstrates the use of this antibody for immunohistochemistry; clinical relevance has not been evaluated. HC = hepatocarcinoma.

Gene Info — RYK

Entrez GeneID	6259
Protein Accession#	P34925
Gene Name	RYK
Gene Alias	D3S3195, JTK5, JTK5A, RYK1
Gene Description	RYK receptor-like tyrosine kinase
Omim ID	600524
Gene Ontology	Hyperlink
Gene Summary	The protein encoded by this gene is an atypical member of the family of growth factor receptor protein tyrosine kinases, differing from other members at a number of conserved residues in the activation and nucleotide binding domains. This gene product belongs to a subfamily whose members do not appear to be regulated by phosphorylation in the activation segment. It has been suggested that mediation of biological activity by recruitment of a signaling-competent auxiliary protein may occur through an as yet uncharacterized mechanism. Two alternative splice variants have been identified, encoding distinct isoforms. [provided by RefSeq]

Other Designations

JTK5A protein tyrosine kinase|hydroxyaryl-protein kinase

Publication Reference

- [Wnt pathway in Dupuytren's disease, connecting pro-fibrotic signals.](#)

van Beuge MM, ten Dam EJ PM, Werker MN , Bank RA.

Translational Research 2015 Dec; 166(6):762.

Application: IHC, Human, Dupuytren's nodules, Transverse ligaments

- [The Wnt receptor Ryk is required for Wnt5a-mediated axon guidance on the contralateral side of the corpus callosum.](#)

Keeble TR, Halford MM, Seaman C, Kee N, Macheda M, Anderson RB, Stacker SA, Cooper HM.

The Journal of Neuroscience 2006 May; 26(21):5840.

Disease

- [Adenocarcinoma](#)
- [Cleft Lip](#)
- [Cleft Palate](#)
- [Genetic Predisposition to Disease](#)
- [Pancreatic Neoplasms](#)