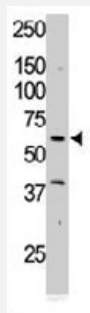


RYK polyclonal antibody

Catalog # PAB3388

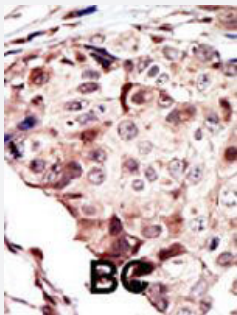
Size 400 uL

Applications



Western Blot (Cell lysate)

The RYK polyclonal antibody (Cat # PAB3388) is used in Western blot to detect RYK in Jurkat cell lysate.



Immunohistochemistry (Formalin/PFA-fixed paraffin-embedded sections)

Formalin-fixed and paraffin-embedded human cancer tissue reacted with RYK polyclonal antibody (Cat # PAB3388), which was peroxidase-conjugated to the secondary antibody, followed by AEC staining. This data demonstrates the use of this antibody for immunohistochemistry; clinical relevance has not been evaluated. BC = breast carcinoma.

Specification

Product Description	Rabbit polyclonal antibody raised against synthetic peptide of RYK.
Immunogen	A synthetic peptide (conjugated with KLH) corresponding to amino acids 150-200 of human RYK.
Host	Rabbit
Reactivity	Human, Mouse, Rat
Form	Liquid
Purification	Protein G purification

Recommend Usage	Immunohistochemistry (Formalin/PFA-fixed paraffin-embedded sections) (1:50-100) Western Blot (1:1000) The optimal working dilution should be determined by the end user.
Storage Buffer	In PBS (0.09% sodium azide)
Storage Instruction	Store at 4°C. For long term storage store at -20°C. Aliquot to avoid repeated freezing and thawing.
Note	This product contains sodium azide: a POISONOUS AND HAZARDOUS SUBSTANCE which should be handled by trained staff only.

Applications

- Western Blot (Cell lysate)

The RYK polyclonal antibody (Cat # PAB3388) is used in Western blot to detect RYK in Jurkat cell lysate.

- Immunohistochemistry (Formalin/PFA-fixed paraffin-embedded sections)

Formalin-fixed and paraffin-embedded human cancer tissue reacted with RYK polyclonal antibody (Cat # PAB3388), which was peroxidase-conjugated to the secondary antibody, followed by AEC staining. This data demonstrates the use of this antibody for immunohistochemistry; clinical relevance has not been evaluated. BC = breast carcinoma.

Gene Info — RYK

Entrez GeneID	6259
Protein Accession#	P34925
Gene Name	RYK
Gene Alias	D3S3195, JTK5, JTK5A, RYK1
Gene Description	RYK receptor-like tyrosine kinase
Omim ID	600524
Gene Ontology	Hyperlink
Gene Summary	The protein encoded by this gene is an atypical member of the family of growth factor receptor protein tyrosine kinases, differing from other members at a number of conserved residues in the activation and nucleotide binding domains. This gene product belongs to a subfamily whose members do not appear to be regulated by phosphorylation in the activation segment. It has been suggested that mediation of biological activity by recruitment of a signaling-competent auxiliary protein may occur through an as yet uncharacterized mechanism. Two alternative splice variants have been identified, encoding distinct isoforms. [provided by RefSeq]

Other Designations

JTK5A protein tyrosine kinase|hydroxyaryl-protein kinase

Publication Reference

- [rse, a novel receptor-type tyrosine kinase with homology to Axl/Ufo, is expressed at high levels in the brain.](#)

Mark MR, Scadden DT, Wang Z, Gu Q, Goddard A, Godowski PJ.

The Journal of Biological Chemistry 1994 Apr; 269(14):10720.

Application: IP, WB-Tr, Mouse, NIH/3T3 cells

Disease

- [Adenocarcinoma](#)
- [Cleft Lip](#)
- [Cleft Palate](#)
- [Genetic Predisposition to Disease](#)
- [Pancreatic Neoplasms](#)