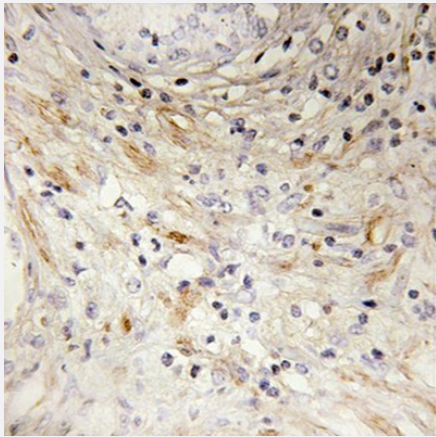


# LAMB3 polyclonal antibody

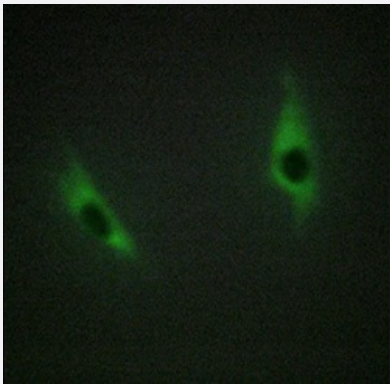
Catalog # PAB31861      Size 100 ug

## Applications



### Immunohistochemistry (Formalin/PFA-fixed paraffin-embedded sections)

Immunohistochemistry (Formalin/PFA-fixed paraffin-embedded sections) staining of human prostate carcinoma tissue with LAMB3 polyclonal antibody (Cat # PAB31861).



### Immunofluorescence

Immunofluorescent staining of HeLa cells with LAMB3 polyclonal antibody (Cat # PAB31861).

## Specification

|                            |   |
|----------------------------|---|
| <b>Product Description</b> | Rabbit polyclonal antibody raised against synthetic peptide of human LAMB3. |
| <b>Immunogen</b>           | Synthetic peptide corresponding to amino acids 671 - 720 of human LAMB3.    |
| <b>Host</b>                | Rabbit  |
| <b>Reactivity</b>          | Human, Mouse, Rat   |
| <b>Form</b>                | Liquid  |

|                            |   |
|----------------------------|---|
| <b>Purification</b>        | Affinity chromatography purification  |
| <b>Isotype</b>             | IgG   |
| <b>Recommend Usage</b>     | Immunofluorescence (1:200 - 1:300)<br>Immunohistochemistry (Formalin/PFA-fixed paraffin-embedded sections) (1:200 - 1:1000)<br>ELISA (1:5000)<br>The optimal working dilution should be determined by the end user. |
| <b>Storage Buffer</b>      | In PBS (50% glycerol, 0.5% BSA, 0.02% sodium azide).  |
| <b>Storage Instruction</b> | Store at -20°C.<br>Aliquot to avoid repeated freezing and thawing.  |

## Applications

- Immunohistochemistry (Formalin/PFA-fixed paraffin-embedded sections)

Immunohistochemistry (Formalin/PFA-fixed paraffin-embedded sections) staining of human prostate carcinoma tissue with LAMB3 polyclonal antibody (Cat # PAB31861).

- Immunocytochemistry

- Immunofluorescence

Immunofluorescent staining of HeLa cells with LAMB3 polyclonal antibody (Cat # PAB31861).

- Enzyme-linked Immunoabsorbent Assay

## Gene Info — LAMB3

|                         |  |
|-------------------------|--|
| <b>Entrez GeneID</b>    | <a href="#">3914</a>   |
| <b>Gene Name</b>        | LAMB3  |
| <b>Gene Alias</b>       | BM600-125KDA, FLJ99565, LAM5, LAMNB1                                 |
| <b>Gene Description</b> | laminin, beta 3  |
| <b>Omim ID</b>          | <a href="#">150310</a> <a href="#">226650</a> <a href="#">226700</a> |
| <b>Gene Ontology</b>    | <a href="#">Hyperlink</a>  |

**Gene Summary**

The product encoded by this gene is a laminin that belongs to a family of basement membrane proteins. This protein is a beta subunit laminin, which together with an alpha and a gamma subunit, forms laminin-5. Mutations in this gene cause epidermolysis bullosa junctional Herlitz type, and generalized atrophic benign epidermolysis bullosa, diseases that are characterized by blistering of the skin. Multiple alternatively spliced transcript variants that encode the same protein have been found for this gene. [provided by RefSeq]

**Other Designations**

OTTHUMP00000034555|OTTHUMP00000034640|kalinin B1 chain|kalinin-140kDa|laminin B1k chain|laminin S B3 chain|laminin, beta 3 (nicein (125kD), kalinin (140kD), BM600 (125kD))|nicein-125kDa

## Pathway

- [ECM-receptor interaction](#)
- [Focal adhesion](#)
- [Pathways in cancer](#)
- [Small cell lung cancer](#)

## Disease

- [Genetic Predisposition to Disease](#)
- [Macular Degeneration](#)
- [Uterine Cervical Neoplasms](#)