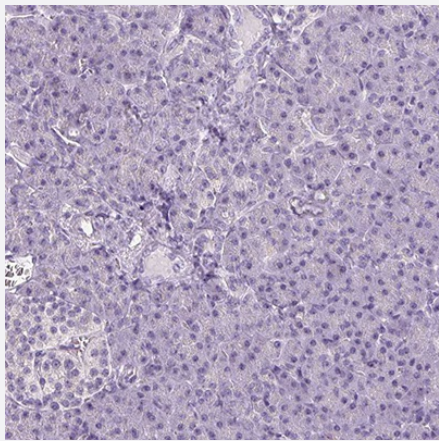


COL7A1 polyclonal antibody

Catalog # PAB31828

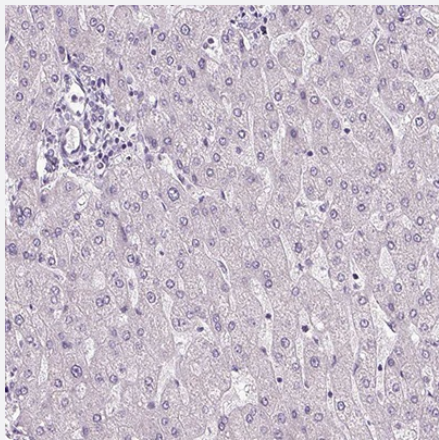
Size 100 uL

Applications



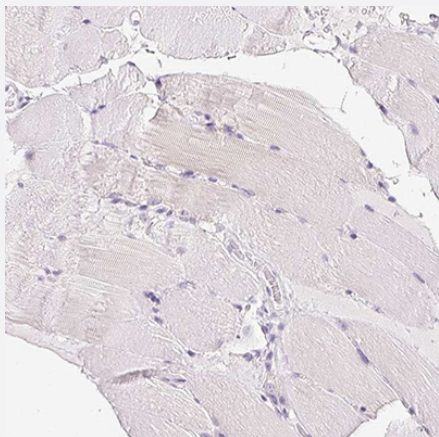
Immunohistochemistry

Immunohistochemical staining of human pancreas shows no positivity in exocrine glandular cells as expected.



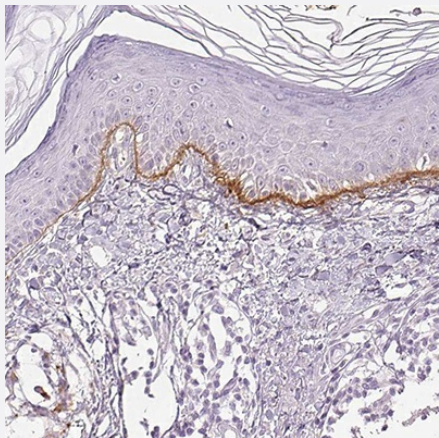
Immunohistochemistry

Immunohistochemical staining of human liver shows no positivity in hepatocytes as expected.



Immunohistochemistry

Immunohistochemical staining of human skeletal muscle shows no positivity in myocytes as expected.



Immunohistochemistry

Immunohistochemical staining of human skin shows strong membranous positivity in epidermal cells.

Specification

| | |
|----------------------------|---|
| Product Description | Rabbit polyclonal antibody raised against recombinant human COL7A1. |
| Sequence | LTLYTLLEGHEVATPATVVPTGPELPVSPVTDLQATELPGQRRVRSWSPVPGATQYRIVRSTQGV ERTLVLPGSQTAFDLDVQAGLSYTVRVSARVGPREGSASVLTVRREPETPLAVPGLRVVVS DA TRVRVAWGPPAGSGFRI |
| Host | Rabbit |
| Reactivity | Human |
| Specificity | This antibody reacts to COL7A1. |
| Form | Liquid |
| Purification | Affinity purification |
| Isotype | IgG |
| Recommend Usage | Immunohistochemistry (1:50 - 1:200) The optimal working dilution should be determined by the end user. |
| Storage Buffer | In PBS, pH7.2 (40% glycerol, 0.02% sodium azide). |
| Storage Instruction | Store at 4°C. For long term storage store at -20°C. Aliquot to avoid repeated freezing and thawing. |
| Note | This product contains sodium azide: a POISONOUS AND HAZARDOUS SUBSTANCE which should be handled by trained staff only. |

Applications

- Immunohistochemistry

Immunohistochemical staining of human pancreas shows no positivity in exocrine glandular cells as expected.

- Immunohistochemistry

Immunohistochemical staining of human liver shows no positivity in hepatocytes as expected.

- Immunohistochemistry

Immunohistochemical staining of human skeletal muscle shows no positivity in myocytes as expected.

- Immunohistochemistry

Immunohistochemical staining of human skin shows strong membranous positivity in epidermal cells.

Gene Info — COL7A1

| | |
|--------------------|--|
| Entrez GeneID | 1294 |
| Gene Name | COL7A1 |
| Gene Alias | EBD1, EBDCT, EBR1 |
| Gene Description | collagen, type VII, alpha 1 |
| Omim ID | 120120 131705 131750 131850 132000 226600 604129 607523 |
| Gene Ontology | Hyperlink |
| Gene Summary | This gene encodes the alpha chain of type VII collagen. The type VII collagen fibril, composed of three identical alpha collagen chains, is restricted to the basement zone beneath stratified squamous epithelia. It functions as an anchoring fibril between the external epithelia and the underlying stroma. Mutations in this gene are associated with all forms of dystrophic epidermolysis bullosa. In the absence of mutations, however, an acquired form of this disease can result from an autoimmune response made to type VII collagen. [provided by RefSeq] |
| Other Designations | LC collagen alpha 1 type VII collagen collagen VII, alpha-1 polypeptide long chain collagen |

Disease

- [Epidermolysis Bullosa](#)
- [Epidermolysis Bullosa Dystrophica](#)

- [Genetic Predisposition to Disease](#)
- [Pruritus](#)
- [Schizophrenia](#)