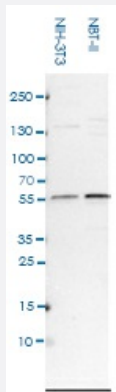


# CRBN polyclonal antibody

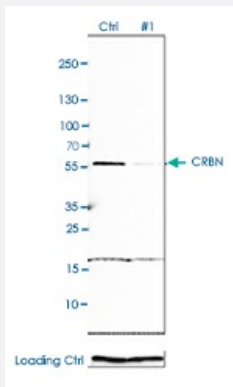
Catalog # PAB31825      Size 100 uL

## Applications



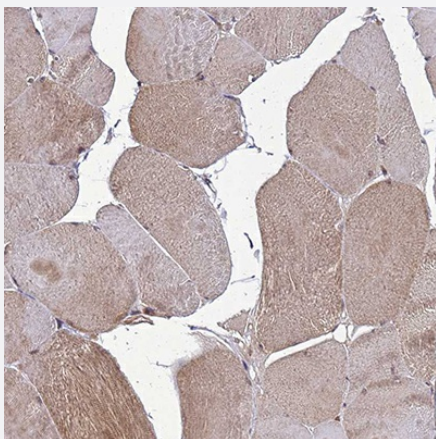
### Western Blot (Cell lysate)

Western blot analysis of mouse cell lines NIH-3T3 and rat cell line NBT-II.



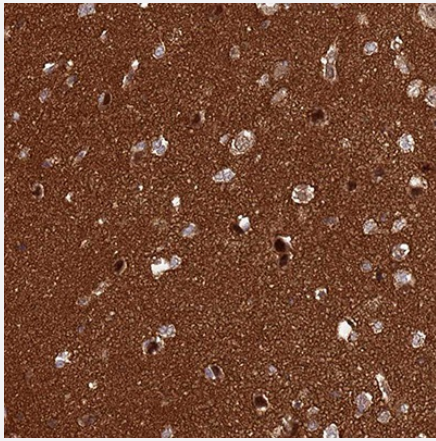
### Western Blot (Transfected lysate)

Western blot analysis of HEK293 cells transfected with control siRNA, target specific siRNA probe # 1, using CRBN polyclonal antibody (Cat # PAB31825). Loading control: Anti-GAPDH.



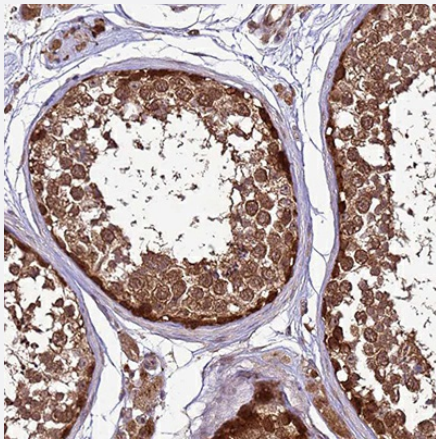
### Immunohistochemistry

Immunohistochemical staining of human skeletal muscle shows only weak cytoplasmic positivity in striated muscle fibers.



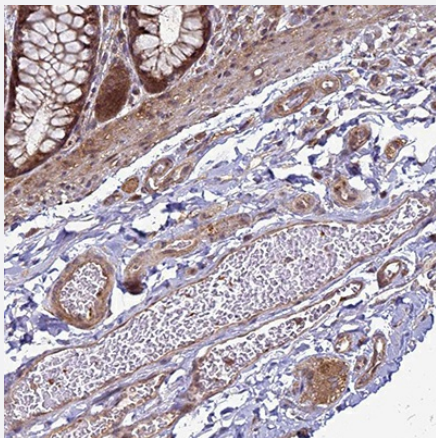
### Immunohistochemistry

Immunohistochemical staining of human cerebral cortex shows strong positivity in neuropil.



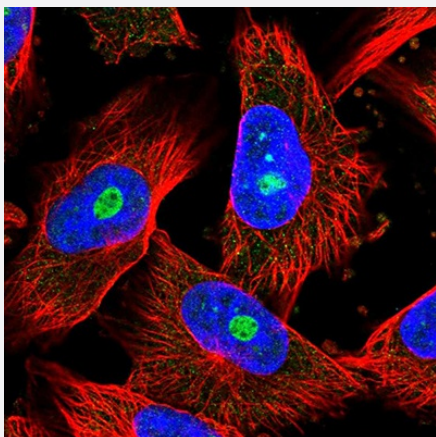
### Immunohistochemistry

Immunohistochemical staining of human testis shows strong positivity in cells in seminiferous ducts.



### Immunohistochemistry

Immunohistochemical staining of human colon shows moderate cytoplasmic and nuclear positivity in peripheral ganglion.



### Immunofluorescence

Immunofluorescent staining of human cell line U-251 MG shows localization to nucleoli.

## Specification

<b>Product Description</b>	Rabbit polyclonal antibody raised against recombinant human CRBN.
<b>Sequence</b>	EVEDQDSKEAKKPNINFDTSLSHTYLGADMEEFHGRTLHDDDDSCQVIPVLPQVMMILIPGQTLP LQLFHPQEVSMVRNLIQKDRTFAVLAYSINVQERE
<b>Host</b>	Rabbit
<b>Reactivity</b>	Human, Mouse, Rat
<b>Specificity</b>	This antibody reacts to CRBN.
<b>Form</b>	Liquid
<b>Purification</b>	Affinity purification
<b>Isotype</b>	IgG
<b>Recommend Usage</b>	Immunofluorescence (0.25-2 ug/mL) Immunohistochemistry (1:200 - 1:500) Western Blot (0.04-0.4 ug/mL) The optimal working dilution should be determined by the end user.
<b>Storage Buffer</b>	In PBS, pH7.2 (40% glycerol, 0.02% sodium azide).
<b>Storage Instruction</b>	Store at 4°C. For long term storage store at -20°C. Aliquot to avoid repeated freezing and thawing.
<b>Note</b>	This product contains sodium azide: a POISONOUS AND HAZARDOUS SUBSTANCE which should be handled by trained staff only.

## Applications

- Western Blot (Cell lysate)

Western blot analysis of mouse cell lines NIH-3T3 and rat cell line NBT-II.

- Western Blot (Transfected lysate)

Western blot analysis of HEK293 cells transfected with control siRNA, target specific siRNA probe # 1, using CRBN polyclonal antibody (Cat # PAB31825). Loading control: Anti-GAPDH.

- Immunohistochemistry

Immunohistochemical staining of human skeletal muscle shows only weak cytoplasmic positivity in striated muscle fibers.

- Immunohistochemistry

Immunohistochemical staining of human cerebral cortex shows strong positivity in neuropil.

- Immunohistochemistry

Immunohistochemical staining of human testis shows strong positivity in cells in seminiferous ducts.

- Immunohistochemistry

Immunohistochemical staining of human colon shows moderate cytoplasmic and nuclear positivity in peripheral ganglion.

- Immunofluorescence

Immunofluorescent staining of human cell line U-251 MG shows localization to nucleoli.

## Gene Info — CRBN

Entrez GeneID	<a href="#">51185</a>
---------------	-----------------------

Gene Name	CRBN
-----------	------

Gene Alias	DKFZp781K0715, MGC27358, MRT2A
------------	--------------------------------

Gene Description	cereblon
------------------	----------

Omim ID	<a href="#">607417</a> <a href="#">609262</a>
---------	---

Gene Ontology	<a href="#">Hyperlink</a>
---------------	---------------------------

Gene Summary	non-syndromic
--------------	---------------

Other Designations	mental retardation, non-syndromic, autosomal recessive, 2A protein x 0001
--------------------	---