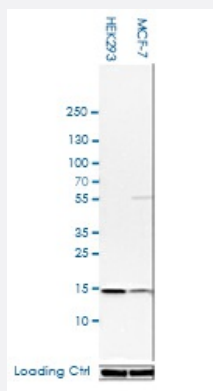


# TOMM20 polyclonal antibody

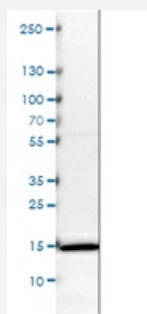
Catalog # PAB31823      Size 100 uL

## Applications



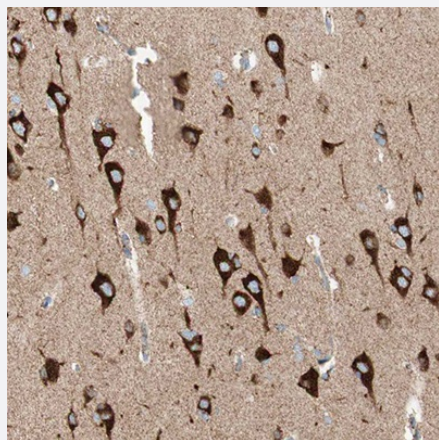
### Western Blot (Cell lysate)

Western blot analysis of human cell lines HEK293 and MCF-7 using TOMM20 polyclonal antibody (Cat # PAB31823). Loading control: Anti-HSP90B1.



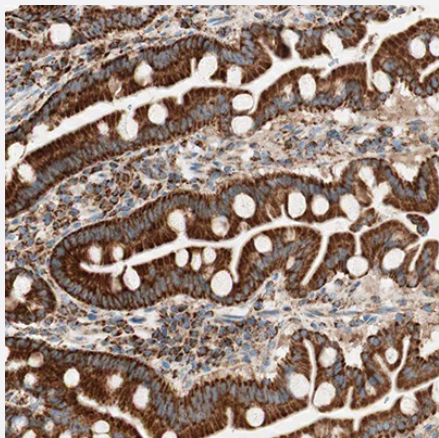
### Western Blot (Cell lysate)

Western blot analysis of mouse cell lines NIH-3T3.



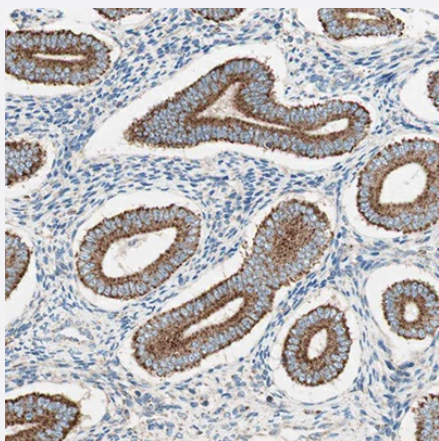
### Immunohistochemistry

Immunohistochemical staining of human cerebral cortex shows strong positivity in mitochondrial in neurons.



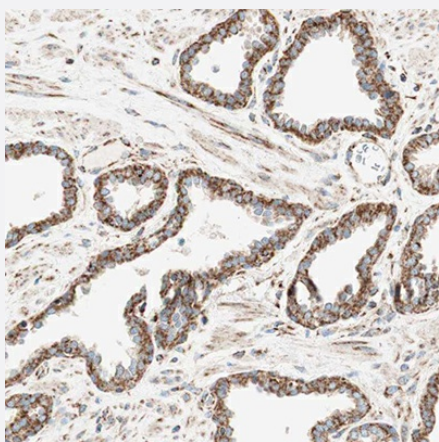
### Immunohistochemistry

Immunohistochemical staining of human duodenum shows strong positivity in mitochondrial in glandular cells.



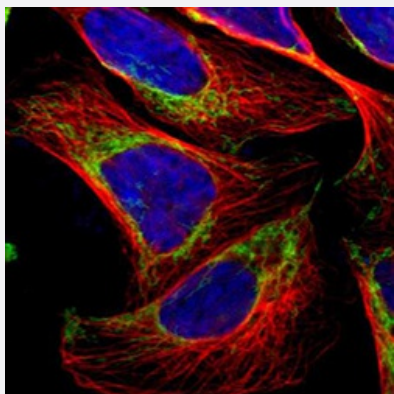
### Immunohistochemistry

Immunohistochemical staining of human endometrium shows strong positivity in mitochondrial in glandular cells.



### Immunohistochemistry

Immunohistochemical staining of human prostate shows strong positivity in mitochondrial in glandular cells.



### Immunofluorescence

Immunofluorescent staining of human cell line U-2 OS shows localization to mitochondrial.

## Specification

<b>Product Description</b>	Rabbit polyclonal antibody raised against recombinant human TOMM20.
<b>Sequence</b>	KRRSDPNFKNRLRERRKKQKLAKERAGLSKLPDLKDAEAVQKFFLEEIQLGEELLAQGEYEKGV DHLTNAIAVCGQPQQLLQVLQQTLPVPVFQMLLTKL PTISQRIVSAQSLAEDDV
<b>Host</b>	Rabbit
<b>Reactivity</b>	Human, Mouse
<b>Specificity</b>	This antibody reacts to to TOMM20.
<b>Form</b>	Liquid
<b>Purification</b>	Affinity purification
<b>Isotype</b>	IgG
<b>Recommend Usage</b>	Immunofluorescence (0.25-2 ug/mL) Immunohistochemistry (1:500 - 1:1000) Western Blot (0.04-0.4 ug/mL) The optimal working dilution should be determined by the end user.
<b>Storage Buffer</b>	In PBS, pH7.2 (40% glycerol, 0.02% sodium azide).
<b>Storage Instruction</b>	Store at 4°C. For long term storage store at -20°C. Aliquot to avoid repeated freezing and thawing.
<b>Note</b>	This product contains sodium azide: a POISONOUS AND HAZARDOUS SUBSTANCE which should be handled by trained staff only.

## Applications

- Western Blot (Cell lysate)

Western blot analysis of human cell lines HEK293 and MCF-7 using TOMM20 polyclonal antibody (Cat # PAB31823). Loading control: Anti-HSP90B1.

- Western Blot (Cell lysate)

Western blot analysis of mouse cell lines NIH-3T3.

- Immunohistochemistry

Immunohistochemical staining of human cerebral cortex shows strong positivity in mitochondrial in neurons.

- Immunohistochemistry

Immunohistochemical staining of human duodenum shows strong positivity in mitochondrial in glandular cells.

- Immunohistochemistry

Immunohistochemical staining of human endometrium shows strong positivity in mitochondrial in glandular cells.

- Immunohistochemistry

Immunohistochemical staining of human prostate shows strong positivity in mitochondrial in glandular cells.

- Immunofluorescence

Immunofluorescent staining of human cell line U-2 OS shows localization to mitochondrial.

## Gene Info — TOMM20

Entrez GeneID	<a href="#">9804</a>
---------------	----------------------

Gene Name	TOMM20
-----------	--------

Gene Alias	KIAA0016, MAS20, MGC117367, MOM19, TOM20
------------	--

Gene Description	translocase of outer mitochondrial membrane 20 homolog (yeast)
------------------	--

Omim ID	<a href="#">601848</a>
---------	------------------------

Gene Ontology	<a href="#">Hyperlink</a>
---------------	---------------------------

Other Designations	OTTHUMP00000037593 translocase of outer mitochondrial membrane 20 homolog translocase of outer mitochondrial membrane 20 homolog type II
--------------------	--