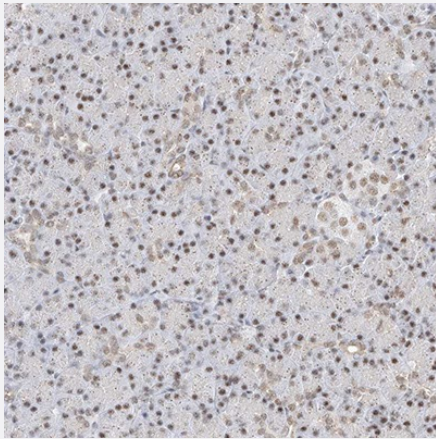


# SMARCA2 polyclonal antibody

Catalog # PAB31822

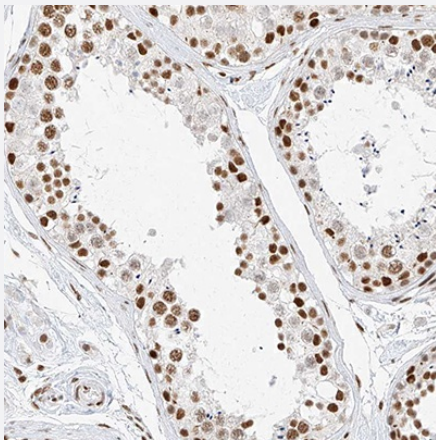
Size 100 uL

## Applications



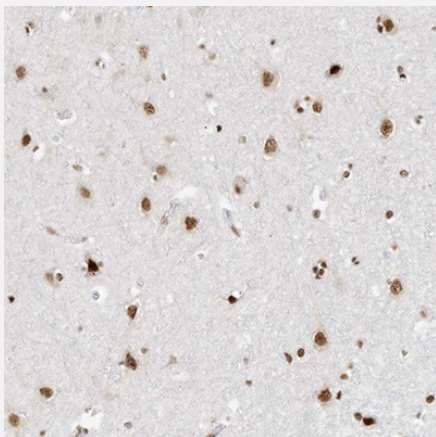
### Immunohistochemistry

Immunohistochemical staining of human pancreas shows moderate nuclear positivity in exocrine glandular cells.



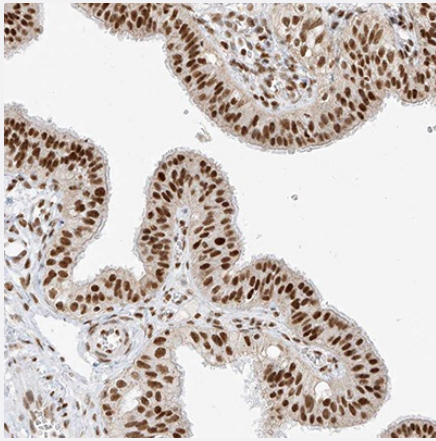
### Immunohistochemistry

Immunohistochemical staining of human testis shows strong nuclear positivity in seminiferous ducts.



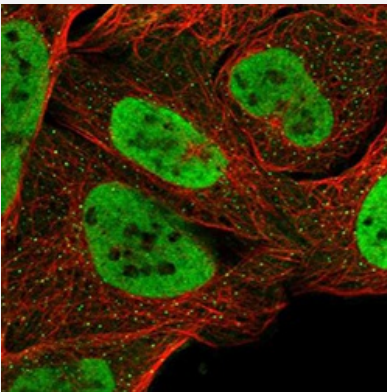
### Immunohistochemistry

Immunohistochemical staining of human cerebral cortex shows strong nuclear positivity in neuronal cells.



### Immunohistochemistry

Immunohistochemical staining of human fallopian tube shows strong nuclear positivity in glandular cells.



### Immunofluorescence

Immunofluorescent staining of human cell line U-2 OS shows localization to nucleoplasm and vesicles.

## Specification

Product Description	Rabbit polyclonal antibody raised against recombinant human SMARCA2.
Sequence	SPVQLHQLRAQILAYKMLARGQPLPETLQLAVQGKRTLPG LQQQQQQQQQQQQQQQQQQQQQQQQQQQQQQQQQQQQQQPPQPQTQQQQQPALVNYNRPSGPGPELSGPSTPQKLPVP
Host	Rabbit
Reactivity	Human
Specificity	This antibody reacts to SMARCA2.
Form	Liquid
Purification	Affinity purification
Isotype	IgG
Recommend Usage	Immunofluorescence (0.25-2 ug/mL) Immunohistochemistry (1:500 - 1:1000) The optimal working dilution should be determined by the end user.

Storage Buffer	In PBS, pH7.2 (40% glycerol, 0.02% sodium azide).
Storage Instruction	Store at 4°C. For long term storage store at -20°C. Aliquot to avoid repeated freezing and thawing.
Note	This product contains sodium azide: a POISONOUS AND HAZARDOUS SUBSTANCE which should be handled by trained staff only.

## Applications

- Immunohistochemistry

Immunohistochemical staining of human pancreas shows moderate nuclear positivity in exocrine glandular cells.

- Immunohistochemistry

Immunohistochemical staining of human testis shows strong nuclear positivity in seminiferous ducts.

- Immunohistochemistry

Immunohistochemical staining of human cerebral cortex shows strong nuclear positivity in neuronal cells.

- Immunohistochemistry

Immunohistochemical staining of human fallopian tube shows strong nuclear positivity in glandular cells.

- Immunofluorescence

Immunofluorescent staining of human cell line U-2 OS shows localization to nucleoplasm and vesicles.

## Gene Info — SMARCA2

Entrez GeneID	<a href="#">6595</a>
Gene Name	SMARCA2
Gene Alias	BAF190, BRM, FLJ36757, MGC74511, SNF2, SNF2L2, SNF2LA, SWI2, Sth1p, hBRM, hSNF2a
Gene Description	SWI/SNF related, matrix associated, actin dependent regulator of chromatin, subfamily a, member 2
Omim ID	<a href="#">600014</a>
Gene Ontology	<a href="#">Hyperlink</a>

**Gene Summary**

The protein encoded by this gene is a member of the SWI/SNF family of proteins and is highly similar to the brahma protein of Drosophila. Members of this family have helicase and ATPase activities and are thought to regulate transcription of certain genes by altering the chromatin structure around those genes. The encoded protein is part of the large ATP-dependent chromatin remodeling complex SNF/SWI, which is required for transcriptional activation of genes normally repressed by chromatin. Two transcript variants encoding different isoforms have been found for this gene, which contains a trinucleotide repeat (CAG) length polymorphism. [provided by RefSeq]

**Other Designations**

OTTHUMP00000020970|OTTHUMP00000020971|SNF2-alpha|SNF2-like 2|SNF2/SWI2-like protein 2|SWI/SNF-related matrix-associated actin-dependent regulator of chromatin a2|global transcription activator homologous sequence|sucrose nonfermenting 2-like protein 2

**Disease**

- [Breast cancer](#)
- [Breast Neoplasms](#)
- [Schizophrenia](#)
- [Tobacco Use Disorder](#)