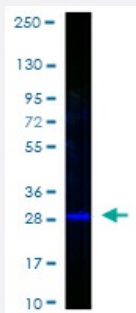


GFP polyclonal antibody (FITC)

Catalog # PAB31812 Size 100 ug

Applications



Western Blot

Western blot analysis of Lane: GFP. Load: 50 ng per lane. Primary antibody: none. Secondary antibody: GFP polyclonal antibody (FITC) (Cat # PAB31812) at 1:1000 for 60 min at RT. Block: 1% BSA-TTBS for 30 min at RT. Predicted/Observed size: 28 kDa, 28 kDa.

Specification

Product Description	Rabbit polyclonal antibody raised against full length recombinant GFP. The antibody is conjugated with Fluorescein (FITC).
Immunogen	Recombinant fusion protein corresponding to full length amino acid sequence (246 amino acids) derived from the jellyfish Aequorea victoria GFP.
Host	Rabbit
Specificity	wt, rGFP, eGFP. Assay by immunoelectrophoresis resulted in a single precipitin arc against anti-rabbit serum, anti-Fluorescein and purified and partially purified green fluorescent protein (Aequorea victoria) serum. No reaction was observed against human, mouse and rat serum proteins.
Form	Lyophilized
Conjugation	FITC
Preparation Method	This antibody was prepared from monospecific antiserum by immunoaffinity chromatography using Green Fluorescent Protein (Aequorea victoria) coupled to agarose beads followed by solid phase adsorption(s) to remove any unwanted reactivities.
Purification	Affinity chromatography
Isotype	IgG

Conjugation Note	FP Value: 7.2 moles Fluorescein (FITC) per mole of IgG
Recommend Usage	ELISA (1:20000-1:40000) Flow Cytometry (1:2000) Immunofluorescence (1:500-1:2500) Western Blot (1:10000-1:25000) The optimal working dilution should be determined by the end user.
Storage Buffer	Lyophilized from 0.02 M potassium phosphate, 0.15 M sodium chloride, pH 7.2 (10 mg/mL BSA (immunoglobulin and protease free), 0.01% (w/v) sodium azide).
Storage Instruction	Store vial at 4°C prior to restoration. After reconstitution with 100 uL deionized water (or equivalent), aliquot contents and freeze at -20°C or below for extended storage. Aliquot to avoid repeated freezing and thawing. Centrifuge product if not completely clear after standing at room temperature. This product is stable for several weeks at 4°C as an undiluted liquid. Dilute only prior to immediate use.
Note	This product contains sodium azide: a POISONOUS AND HAZARDOUS SUBSTANCE which should be handled by trained staff only.

Applications

- Western Blot

Western blot analysis of Lane: GFP. Load: 50 ng per lane. Primary antibody: none. Secondary antibody: GFP polyclonal antibody (FITC) (Cat # PAB31812) at 1:1000 for 60 min at RT. Block: 1% BSA-TTBS for 30 min at RT. Predicted/Observed size: 28 kDa, 28 kDa.

- Immunofluorescence

- Enzyme-linked Immunoabsorbent Assay

- Flow Cytometry