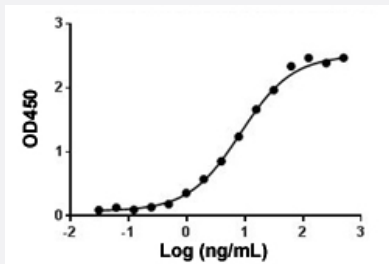


Anti-Rituximab polyclonal antibody

Catalog # PAB31786 Size 40 ug

Applications



Enzyme-linked Immunoabsorbent Assay

Anti-Rituximab polyclonal antibody (Cat # PAB31786) binds with Rituximab. Coating antigen: Rituximab. 1 ug/mL. Anti-Rituximab polyclonal antibody (Cat # PAB31786) dilution start from 500 ng/mL. EC₅₀ = 8.384 ng/mL.

Specification

Product Description	Rabbit polyclonal antibody raised against Rituximab. Target gene is CD20.
Immunogen	Rituximab.
Host	Rabbit
Specificity	The product is specific for Rituximab. This antibody serves as an excellent positive control for Rituximab immunogenicity (ADA) assays.
Form	Lyophilized
Purification	Antigen affinity purification
Recommend Usage	ELISA (ELISA detection: 0.01-0.1 ug/mL) (Direct ELISA) Immunogenicity assay The optimal working dilution should be determined by the end user.
Inhibitory IC50	N/A
Storage Buffer	Lyophilized from PBS, pH 7.4 (0.02% sodium azide).

Storage Instruction

Store at -20°C. The lyophilized product remains stable up to 1 year at -20°C from date of receipt. After reconstitution with deionized water (or equivalent) to a final concentration of 0.5 mg/mL, it can be stored for 2-3 weeks at 2-8°C or for up to 12 months at -20°C or below. Aliquot to avoid repeated freezing and thawing.

Note

This product contains sodium azide: a POISONOUS AND HAZARDOUS SUBSTANCE which should be handled by trained staff only.

Applications

- Enzyme-linked Immunoabsorbent Assay

Anti-Rituximab polyclonal antibody (Cat # PAB31786) binds with Rituximab. Coating antigen: Rituximab. 1 ug/mL. Anti-Rituximab polyclonal antibody (Cat # PAB31786) dilution start from 500 ng/mL. EC₅₀ = 8.384 ng/mL.

- Immunogenicity assay

Gene Info — MS4A1

Entrez GeneID[931](#)**Gene Name**

MS4A1

Gene Alias

B1, Bp35, CD20, LEU-16, MGC3969, MS4A2, S7

Gene Description

membrane-spanning 4-domains, subfamily A, member 1

Omim ID[112210](#)**Gene Ontology**[Hyperlink](#)**Gene Summary**

This gene encodes a member of the membrane-spanning 4A gene family. Members of this nascent protein family are characterized by common structural features and similar intron/exon splice boundaries and display unique expression patterns among hematopoietic cells and nonlymphoid tissues. This gene encodes a B-lymphocyte surface molecule which plays a role in the development and differentiation of B-cells into plasma cells. This family member is localized to 11q12, among a cluster of family members. Alternative splicing of this gene results in two transcript variants which encode the same protein. [provided by RefSeq]

Other Designations

B-lymphocyte cell-surface antigen B1|CD20 antigen|CD20 receptor

Pathway

- [Hematopoietic cell lineage](#)

Disease

- [Breast cancer](#)
- [Breast Neoplasms](#)
- [Genetic Predisposition to Disease](#)
- [Lymphoma](#)
- [Neoplasm Recurrence](#)
- [Ovarian cancer](#)