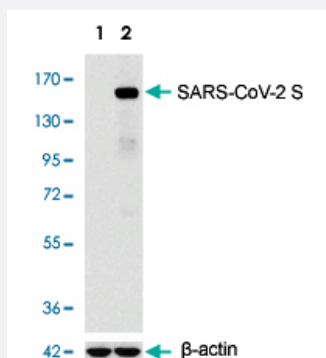


## SARS-CoV-2

# SARS-CoV-2 S polyclonal antibody

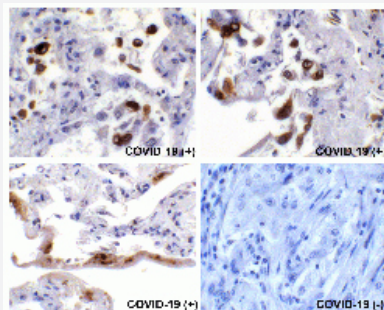
Catalog # PAB31725      Size 100 ug

## Applications



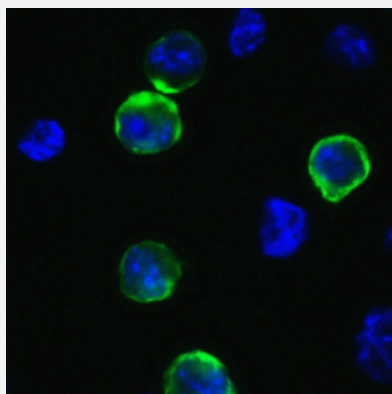
### Western Blot (Transfected lysate)

Western Blot analysis of Lane 1: WT 293 cells and Lane 2: SARS-CoV-2 Spike overexpressed 293 cells. Loading: 15 ug per lane of 293 cell lysate. Antibodies: SARS-CoV-2 S polyclonal antibody (Cat # PAB31725) (1 ug/mL), 1h incubation at RT in 5% NFDM/TBST. Secondary: Goat antirabbit IgG HRP conjugate at 1:10000 dilution.



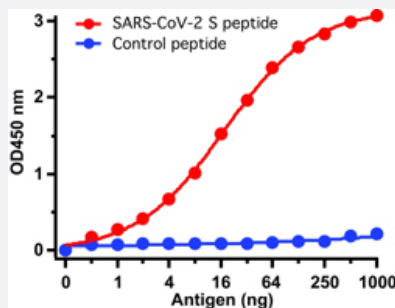
### Immunohistochemistry (Formalin/PFA-fixed paraffin-embedded sections)

Immunohistochemical analysis of paraffin-embedded COVID-19 patient lung tissue using SARS-CoV-2 S polyclonal antibody (Cat # PAB31725, 0.5 ug/mL). Tissue was fixed with formaldehyde and blocked with 10% serum for 1 h at RT; antigen retrieval was by heat mediation with a citrate buffer (pH6). Samples were incubated with primary antibody overnight at 4°C. A goat anti-rabbit IgG H&L (HRP) at 1/250 was used as secondary. Counter stained with Hematoxylin. Strong spike protein signal was observed in macrophages and air epithelium of COVID-19 patient lung, but not in non-COVID-19 patient lung.



### Immunofluorescence

Immunofluorescent analysis of 4% paraformaldehyde-fixed 293T cells labeling SARS-CoV-2 (COVID-19) Spike with Cat # PAB31725 at 1 ug/mL, followed by goat anti-rabbit IgG secondary antibody at 1/500 dilution (green) and DAPI staining (blue).



## Enzyme-linked Immunoabsorbent Assay

A direct ELISA was performed using antigen or control peptide as coating antigen and this antibody as the capture antibody (1 ug/mL). Secondary: Goat anti-rabbit igG HRP conjugate at 1:20000 dilution. Detection range is from 0.5 to 1000 ng/mL.

## Specification

<b>Product Description</b>	Rabbit Polyclonal antibody raised against synthetic peptide of SARS-CoV-2 S.
<b>Immunogen</b>	A synthetic peptide corresponding to 20 amino acids near the C-terminus of SARS-CoV-2 Spike glycoprotein. The immunogen is located within the last 50 amino acids of SARS-CoV-2 Spike protein.
<b>Host</b>	Rabbit
<b>Reactivity</b>	SARS-CoV-2
<b>Form</b>	Liquid
<b>Purification</b>	Peptide affinity purification
<b>Isotype</b>	IgG
<b>Recommend Usage</b>	ELISA Immunofluorescence (1 ug/mL) Immunohistochemistry (0.2 ug/mL) Western Blot (1 ug/mL) The optimal working dilution should be determined by the end user.
<b>Storage Buffer</b>	In PBS (0.02% sodium azide).
<b>Storage Instruction</b>	Store at 4°C for up to one year. Aliquot to avoid repeated freezing and thawing.
<b>Note</b>	This product contains sodium azide: a POISONOUS AND HAZARDOUS SUBSTANCE which should be handled by trained staff only.

## Applications

- Western Blot (Transfected lysate)

Western Blot analysis of Lane 1: WT 293 cells and Lane 2: SARS-CoV-2 Spike overexpressed 293 cells. Loading: 15 ug per lane of 293 cell lysate. Antibodies: SARS-CoV-2 S polyclonal antibody (Cat # PAB31725) (1 ug/mL), 1h incubation at RT in 5% NFDm/TBST. Secondary: Goat anti-rabbit IgG HRP conjugate at 1:10000 dilution.

- Immunohistochemistry (Formalin/PFA-fixed paraffin-embedded sections)

Immunohistochemical analysis of paraffin-embedded COVID-19 patient lung tissue using SARS-CoV-2 S polyclonal antibody (Cat # PAB31725, 0.5 ug/mL). Tissue was fixed with formaldehyde and blocked with 10% serum for 1 h at RT; antigen retrieval was by heat mediation with a citrate buffer (pH6). Samples were incubated with primary antibody overnight at 4°C. A goat anti-rabbit IgG H&L (HRP) at 1/250 was used as secondary. Counter stained with Hematoxylin. Strong spike protein signal was observed in macrophages and air epithelium of COVID-19 patient lung, but not in non-COVID-19 patient lung.

- Immunofluorescence

Immunofluorescent analysis of 4% paraformaldehyde-fixed 293T cells labeling SARS-CoV-2 (COVID-19) Spike with Cat # PAB31725 at 1 ug/mL, followed by goat anti-rabbit IgG secondary antibody at 1/500 dilution (green) and DAPI staining (blue).

- Enzyme-linked Immunoabsorbent Assay

A direct ELISA was performed using antigen or control peptide as coating antigen and this antibody as the capture antibody (1 ug/mL). Secondary: Goat anti-rabbit IgG HRP conjugate at 1:20000 dilution. Detection range is from 0.5 to 1000 ng/mL.