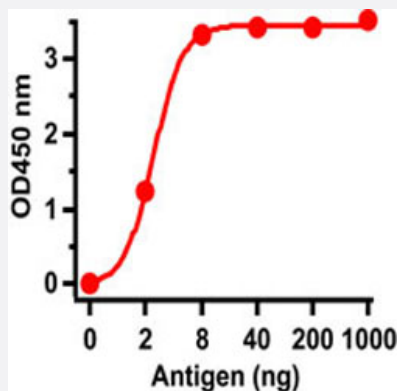


SARS-CoV S polyclonal antibody

Catalog # PAB31723

Size 100 ug

Applications



Enzyme-linked Immunoabsorbent Assay

ELISA was performed using immunogen as coating antigen and the SARS-CoV S polyclonal antibody as the capture antibody.

Specification

Product Description	Rabbit polyclonal antibody raised against synthetic peptide of SARS-CoV S.
Immunogen	A synthetic peptide corresponding to 15 amino acids near the center of SARS-CoV S. The immunogen is located within amino acids 650-700 of SARS-CoV S.
Host	Rabbit
Reactivity	SARS-CoV
Form	Liquid
Purification	Peptide affinity purification
Isotype	IgG
Recommend Usage	ELISA The optimal working dilution should be determined by the end user.
Storage Buffer	In PBS (0.02% sodium azide).

Storage Instruction

Store at 4°C for three months. For long term storage store at -20°C.
Aliquot to avoid repeated freezing and thawing.

Note

This product contains sodium azide: a POISONOUS AND HAZARDOUS SUBSTANCE which should be handled by trained staff only.

Applications

- Enzyme-linked Immunoabsorbent Assay

ELISA was performed using immunogen as coating antigen and the SARS-CoV S polyclonal antibody as the capture antibody.

Gene Info — S

Entrez GeneID	1489668
---------------	-------------------------

Protein Accession#	P59594
--------------------	------------------------

Gene Name	S
-----------	---

Gene Alias	E2
------------	----

Gene Description	E2 glycoprotein precursor
------------------	---------------------------

Gene Ontology	Hyperlink
---------------	---------------------------

Other Designations	spike glycoprotein
--------------------	--------------------