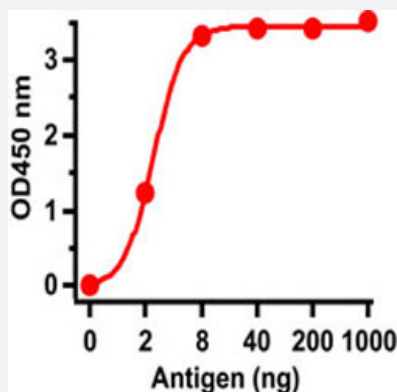


SARS-CoV-2

SARS-CoV/SARS-CoV-2 S polyclonal antibody

Catalog # PAB31722 Size 100 ug

Applications



Enzyme-linked Immunoabsorbent Assay

ELISA was performed using immunogen as coating antigen and the SARS-CoV/SARS-CoV-2 S polyclonal antibody as the capture antibody.

Specification

Product Description	Rabbit polyclonal antibody raised against partial synthetic protein of SARS-CoV/SARS-CoV-2 S.
Immunogen	A synthetic peptide corresponding to 17 amino acids at near the center of SARS-CoV S.
Host	Rabbit
Reactivity	SARS-CoV, SARS-CoV-2
Form	Liquid
Purification	Peptide affinity purification
Isotype	IgG
Recommend Usage	ELISA The optimal working dilution should be determined by the end user.
Storage Buffer	In PBS (0.02% sodium azide).

Storage Instruction

Store at 4°C for up to one year.
Aliquot to avoid repeated freezing and thawing.

Note

This product contains sodium azide: a POISONOUS AND HAZARDOUS SUBSTANCE which should be handled by trained staff only.

Applications

- Enzyme-linked Immunoabsorbent Assay

ELISA was performed using immunogen as coating antigen and the SARS-CoV/SARS-CoV-2 S polyclonal antibody as the capture antibody.

Gene Info — S

Entrez GeneID [1489668](#)

Protein Accession# [P59594](#)

Gene Name S

Gene Alias E2

Gene Description E2 glycoprotein precursor

Gene Ontology [Hyperlink](#)

Other Designations spike glycoprotein