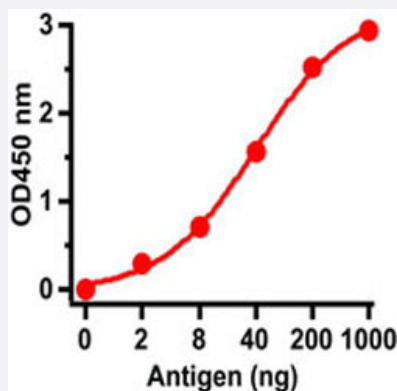


# SARS-CoV M polyclonal antibody

Catalog # PAB31719

Size 100 ug

## Applications



### Enzyme-linked Immunoabsorbent Assay

ELISA was performed using immunogen as coating antigen and the SARS-CoV M polyclonal antibody as the capture antibody.

## Specification

Product Description	Rabbit polyclonal antibody raised against partial synthetic protein of SARS-CoV M.
Immunogen	A synthetic peptide corresponding to 15 amino acids at the C-terminus of SARS-CoV M.
Host	Rabbit
Reactivity	SARS-CoV
Form	Liquid
Purification	Peptide affinity purification
Isotype	IgG
Recommend Usage	ELISA The optimal working dilution should be determined by the end user.
Storage Buffer	In PBS (0.02% sodium azide).
Storage Instruction	Store at 4°C for three months. For long term storage store at -20°C. Aliquot to avoid repeated freezing and thawing.

**Note**

This product contains sodium azide: a POISONOUS AND HAZARDOUS SUBSTANCE which should be handled by trained staff only.

## Applications

- Enzyme-linked Immunoabsorbent Assay

ELISA was performed using immunogen as coating antigen and the SARS-CoV M polyclonal antibody as the capture antibody.

## Gene Info — M

Entrez GeneID	<a href="#">1489672</a>
---------------	-------------------------

Protein Accession#	<a href="#">P59596</a>
--------------------	------------------------

Gene Name	M
-----------	---

Gene Alias	-
------------	---

Gene Description	matrix protein
------------------	----------------

Gene Ontology	<a href="#">Hyperlink</a>
---------------	---------------------------

Other Designations	-
--------------------	---