

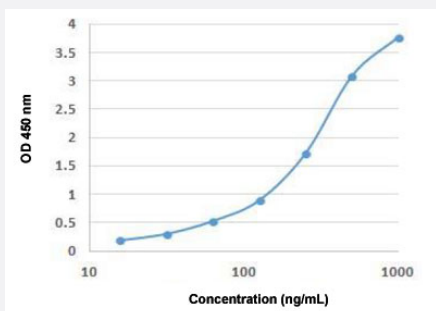
SARS-CoV-2

SARS-CoV-2 S polyclonal antibody

Catalog # PAB31705

Size 100 ug

Applications



Enzyme-linked Immunoabsorbent Assay

ELISA titration assay curve of SARS-CoV-2 S polyclonal antibody (Cat# PAB31705) to SARS-CoV-2 S protein: 96-well ELISA plate was coated with SARS-CoV-2 S protein at a concentration of 2 ug/mL.

Specification

Product Description	Rabbit polyclonal antibody raised against full length recombinant SARS-CoV-2 S.
Immunogen	Recombinant protein corresponding to full length SARS-CoV-2 S.
Host	Rabbit
Reactivity	SARS-CoV-2
Specificity	The antibody reacts with spike protein of SARS-CoV-2. Cross-reaction to spike proteins from other coronavirus not tested.
Form	Liquid
Purification	Protein G purification
Isotype	IgG
Recommend Usage	ELISA Western Blot (1:100-1:1000) The optimal working dilution should be determined by the end user.
Storage Buffer	In PBS (0.1% gelatin, 0.09% sodium azide).

Storage Instruction

Store at 4°C for short term. For long term storage store at -20°C.
Aliquot to avoid repeated freezing and thawing.

Note

This product contains sodium azide: a POISONOUS AND HAZARDOUS SUBSTANCE which should be handled by trained staff only.

Applications

- Western Blot
- Enzyme-linked Immunoabsorbent Assay

ELISA titration assay curve of SARS-CoV-2 S polyclonal antibody (Cat# PAB31705) to SARS-CoV-2 S protein: 96-well ELISA plate was coated with SARS-CoV-2 S protein at a concentration of 2 ug/mL.