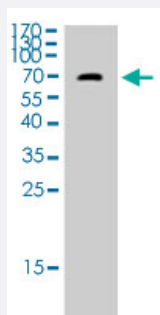


# CDC25A (phospho S124) polyclonal antibody

Catalog # PAB31659      Size 100 uL

## Applications



### Western Blot (Cell lysate)

Western Blot (Cell lysate) analysis of 293 cell lysate.

## Specification

<b>Product Description</b>	Rabbit polyclonal antibody raised against synthetic peptide of human CDC25A (phospho S124).
<b>Immunogen</b>	A synthetic peptide corresponding to amino acids 60-140 of human CDC25A (phospho S124).
<b>Host</b>	Rabbit
<b>Reactivity</b>	Human, Mouse, Rat
<b>Specificity</b>	This antibody detects endogenous levels of Cdc25A protein only when phosphorylated at S124.
<b>Form</b>	Liquid
<b>Purification</b>	Affinity purification
<b>Isotype</b>	IgG
<b>Recommend Usage</b>	ELISA (1:5000) Western Blot (1:500-2000) The optimal working dilution should be determined by the end user.
<b>Storage Buffer</b>	In PBS (50% glycerol, 0.5% BSA and 0.02% sodium azide).

**Storage Instruction**

Store at -20°C.  
Aliquot to avoid repeated freezing and thawing.

**Note**

This product contains sodium azide: a POISONOUS AND HAZARDOUS SUBSTANCE which should be handled by trained staff only.

## Applications

- Western Blot (Cell lysate)

Western Blot (Cell lysate) analysis of 293 cell lysate.

- Enzyme-linked Immunoabsorbent Assay

## Gene Info — CDC25A

**Entrez GeneID**[993](#)**Protein Accession#**[P30304](#)**Gene Name**

CDC25A

**Gene Alias**

CDC25A2

**Gene Description**

cell division cycle 25 homolog A (S. pombe)

**Omim ID**[116947](#)**Gene Ontology**[Hyperlink](#)**Gene Summary**

CDC25A is a member of the CDC25 family of phosphatases. CDC25A is required for progression from G1 to the S phase of the cell cycle. It activates the cyclin-dependent kinase CDC2 by removing two phosphate groups. CDC25A is specifically degraded in response to DNA damage, which prevents cells with chromosomal abnormalities from progressing through cell division. CDC25A is an oncogene, although its exact role in oncogenesis has not been demonstrated. Two transcript variants encoding different isoforms have been found for this gene. [provided by RefSeq]

**Other Designations**

M-phase inducer phosphatase 1|cell division cycle 25A|dual specificity phosphatase CDC25A

## Pathway

- [Cell cycle](#)

## Disease

- [Adenocarcinoma](#)
- [Breast Neoplasms](#)
- [Esophageal Neoplasms](#)
- [Genetic Predisposition to Disease](#)
- [Lung Neoplasms](#)
- [Ovarian Neoplasms](#)
- [Pulmonary Disease](#)
- [Schizophrenia](#)
- [Tobacco Use Disorder](#)
- [Urinary Bladder Neoplasms](#)
- [Werner syndrome](#)