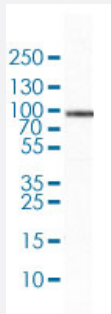


SCARB2 polyclonal antibody

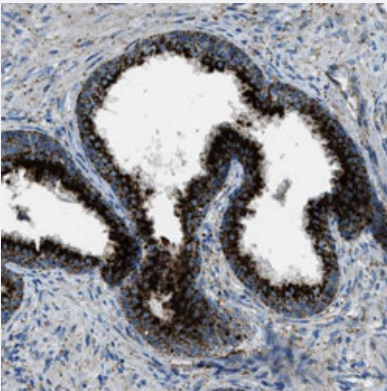
Catalog # PAB31597 Size 100 uL

Applications



Western Blot (Cell lysate)

Western Blot (Cell lysate) analysis of U-138 MG cell lysate.



Immunohistochemistry (Formalin/PFA-fixed paraffin-embedded sections)

Immunohistochemical staining of human prostate shows strong cytoplasmic positivity with a granular pattern in glandular cells.

Specification

Product Description	Rabbit polyclonal antibody raised against partial recombinant human SCARB2.
Immunogen	Recombinant protein corresponding to human SCARB2.
Sequence	SFHPLITKDEVLYVFPSTDFCRSVYITFSDYESVQGLPAFRYKVP AEILANTSDNAGFCIPEGNCLGS GVLNVSICKNGAPIIMSFPHFYQADERFVSAIEGMHPNQEDHETFDINPLTGILKAAKRFQINIVK KLDDFVETGD
Host	Rabbit
Reactivity	Human

Form	Liquid
Purification	Antigen affinity purification
Isotype	IgG
Recommend Usage	Immunohistochemistry (Formalin/PFA-fixed paraffin-embedded sections) (1:200-500) Western Blot (1:100-250) The optimal working dilution should be determined by the end user.
Storage Buffer	In PBS, pH 7.2 (40% glycerol, 0.02% sodium azide).
Storage Instruction	Store at 4°C. For long term storage store at -20°C. Aliquot to avoid repeated freezing and thawing.
Note	This product contains sodium azide: a POISONOUS AND HAZARDOUS SUBSTANCE which should be handled by trained staff only.

Applications

- Western Blot (Cell lysate)

Western Blot (Cell lysate) analysis of U-138 MG cell lysate.

- Immunohistochemistry (Formalin/PFA-fixed paraffin-embedded sections)

Immunohistochemical staining of human prostate shows strong cytoplasmic positivity with a granular pattern in glandular cells.

Gene Info — SCARB2

Entrez GeneID	950
Protein Accession#	Q14108
Gene Name	SCARB2
Gene Alias	AMRF, CD36L2, HLGP85, LIMPII, SR-BII
Gene Description	scavenger receptor class B, member 2
Omim ID	602257
Gene Ontology	Hyperlink

Gene Summary

The protein encoded by this gene is a type III glycoprotein that is located primarily in limiting membranes of lysosomes and endosomes. Studies of the similar protein in mice and rat suggested that this protein may participate in membrane transportation and the reorganization of endosomal/lysosomal compartment. Deficiency of the similar protein in mice was reported to impair cell membrane transport processes and cause pelvic junction obstruction, deafness, and peripheral neuropathy. [provided by RefSeq]

Other Designations

85 kDa lysosomal sialoglycoprotein scavenger receptor class B, member 2|CD36 antigen (collagen type I receptor, thrombospondin receptor)-like 2 (lysosomal integral membrane protein II)|lysosomal integral membrane protein II

Pathway

- [Lysosome](#)

Disease

- [Cardiovascular Diseases](#)
- [Diabetes Mellitus](#)
- [Drug Toxicity](#)
- [Edema](#)
- [Hypercholesterolemia](#)