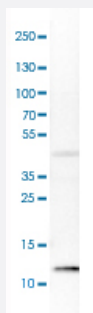


S100A8 polyclonal antibody

Catalog # PAB31581

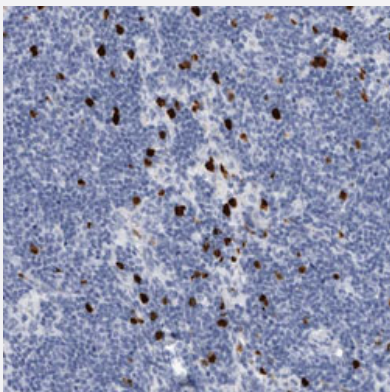
Size 100 uL

Applications



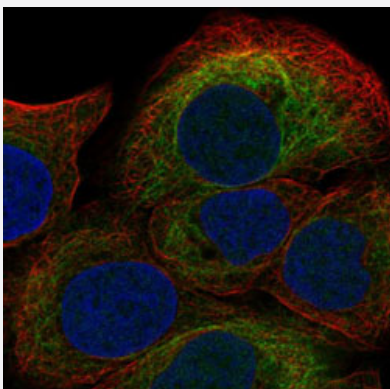
Western Blot (Cell lysate)

Western Blot analysis of SK-BR-3 cell lysate with S100A8 polyclonal antibody (Cat # PAB31581).



Immunohistochemistry (Formalin/PFA-fixed paraffin-embedded sections)

Immunohistochemical staining (Formalin-fixed paraffin-embedded sections) of human lymph node with S100A8 polyclonal antibody (Cat # PAB31581) shows strong cytoplasmic and nuclear positivity in a subset of cells outside reaction centra.



Immunofluorescence

Immunofluorescent staining of HaCaT cells with S100A8 polyclonal antibody (Cat # PAB31581) (Green) shows localization to intermediate filaments.

Specification

Product Description	Rabbit polyclonal antibody raised against partial recombinant human S100A8.
Immunogen	Recombinant protein corresponding to human S100A8.
Sequence	LTELEKALNSIIDVYHKYSLIKGNFHAVYRDDLKLLTECPQYIRKKGADVWFKELDINTDGAVNFQ EFLILVIKM
Host	Rabbit
Reactivity	Human
Form	Liquid
Purification	Antigen affinity purification
Isotype	IgG
Recommend Usage	Immunofluorescence (1-4 ug/mL) Immunohistochemistry (Formalin/PFA-fixed paraffin-embedded sections) (1:2500-1:5000) Western Blot (1:100-1:250) The optimal working dilution should be determined by the end user.
Storage Buffer	In PBS, pH 7.2 (40% glycerol, 0.02% sodium azide).
Storage Instruction	Store at 4°C. For long term storage store at -20°C. Aliquot to avoid repeated freezing and thawing.
Note	This product contains sodium azide: a POISONOUS AND HAZARDOUS SUBSTANCE which should be handled by trained staff only.

Applications

- Western Blot (Cell lysate)

Western Blot analysis of SK-BR-3 cell lysate with S100A8 polyclonal antibody (Cat # PAB31581).

- Immunohistochemistry (Formalin/PFA-fixed paraffin-embedded sections)

Immunohistochemical staining (Formalin-fixed paraffin-embedded sections) of human lymph node with S100A8 polyclonal antibody (Cat # PAB31581) shows strong cytoplasmic and nuclear positivity in a subset of cells outside reaction centra.

- Immunofluorescence

Immunofluorescent staining of HaCaT cells with S100A8 polyclonal antibody (Cat # PAB31581) (Green) shows localization to intermediate filaments.

Gene Info — S100A8

Entrez GeneID	6279
Protein Accession#	P05109
Gene Name	S100A8
Gene Alias	60B8AG, CAGA, CFAG, CGLA, CP-10, L1Ag, MA387, MIF, MRP8, NIF, P8
Gene Description	S100 calcium binding protein A8
Omim ID	123885
Gene Ontology	Hyperlink
Gene Summary	The protein encoded by this gene is a member of the S100 family of proteins containing 2 EF-hand calcium-binding motifs. S100 proteins are localized in the cytoplasm and/or nucleus of a wide range of cells, and involved in the regulation of a number of cellular processes such as cell cycle progression and differentiation. S100 genes include at least 13 members which are located as a cluster on chromosome 1q21. This protein may function in the inhibition of casein kinase and as a cytokine. Altered expression of this protein is associated with the disease cystic fibrosis. [provided by RefSeq]
Other Designations	OTTHUMP00000015329 OTTHUMP00000015330 S100 calcium-binding protein A8 S100 calcium-binding protein A8 (calgranulin A) calgranulin A cystic fibrosis antigen

Publication Reference

- [Comparative proteomic analysis reveals activation of mucosal innate immune signaling pathways during cholera.](#)

Ellis CN, LaRocque RC, Uddin T, Krastins B, Mayo-Smith LM, Sarracino D, Karlsson EK, Rahman A, Shirin T, Bhuiyan TR, Chowdhury F, Khan AI, Ryan ET, Calderwood SB, Qadri F, Harris JB.

Infection and Immunity 2015 Mar; 83(3):1089.

Application: IF, IHC-P, Human, Human duodenal biopsy specimens

Disease

- [Aggressive Periodontitis](#)
- [Dermatitis](#)
- [Genetic Predisposition to Disease](#)
- [Kidney Calculi](#)
- [Periodontitis](#)