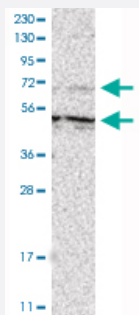


# KIF12 polyclonal antibody

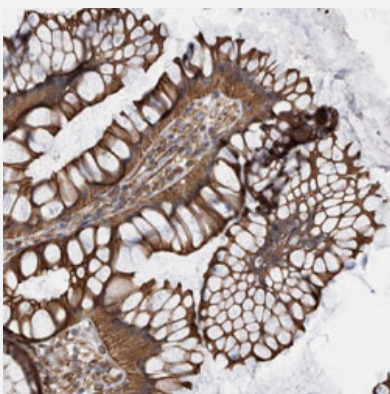
Catalog # PAB31544      Size 100 uL

## Applications



### Western Blot (Cell lysate)

Western Blot analysis of RT-4 cell lysate with KIF12 polyclonal antibody (Cat # PAB31544).



### Immunohistochemistry (Formalin/PFA-fixed paraffin-embedded sections)

Immunohistochemical staining (Formalin-fixed paraffin-embedded sections) of human rectum with KIF12 polyclonal antibody (Cat # PAB31544) shows strong cytoplasmic positivity in glandular cells.

## Specification

<b>Product Description</b>	Rabbit polyclonal antibody raised against partial recombinant human KIF12.
<b>Immunogen</b>	Recombinant protein corresponding to human KIF12.
<b>Sequence</b>	SAQCLPETLSTLRYASRAQRVTTTPQAPKSPVAKQPQRLETEMLQLQEENRRLQFQLDQMDCK ASGLSGARVAWAQRNLYGML
<b>Host</b>	Rabbit
<b>Reactivity</b>	Human

Form	Liquid
Purification	Antigen affinity purification
Isotype	IgG
Recommend Usage	Immunohistochemistry (Formalin/PFA-fixed paraffin-embedded sections) (1:200-1:500) Western Blot (1:100-1:250) The optimal working dilution should be determined by the end user.
Storage Buffer	In PBS, pH 7.2 (40% glycerol, 0.02% sodium azide).
Storage Instruction	Store at 4°C. For long term storage store at -20°C. Aliquot to avoid repeated freezing and thawing.
Note	This product contains sodium azide: a POISONOUS AND HAZARDOUS SUBSTANCE which should be handled by trained staff only.

## Applications

- Western Blot (Cell lysate)

Western Blot analysis of RT-4 cell lysate with KIF12 polyclonal antibody (Cat # PAB31544).

- Immunohistochemistry (Formalin/PFA-fixed paraffin-embedded sections)

Immunohistochemical staining (Formalin-fixed paraffin-embedded sections) of human rectum with KIF12 polyclonal antibody (Cat # PAB31544) shows strong cytoplasmic positivity in glandular cells.

## Gene Info — KIF12

Entrez GeneID	<a href="#">113220</a>
Protein Accession#	<a href="#">Q96FN5</a>
Gene Name	KIF12
Gene Alias	RP11-56P10.3
Gene Description	kinesin family member 12
Omim ID	<a href="#">611278</a>
Gene Ontology	<a href="#">Hyperlink</a>
Gene Summary	KIF12 is a member of the kinesin superfamily of microtubule-associated molecular motors (see MIM 148760) that play important roles in intracellular transport and cell division (Nakagawa et al., 1997 [PubMed 9275178]).[supplied by OMIM]

Other Designations

OTTHUMP00000021965

---