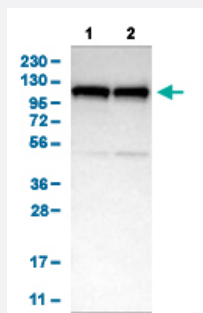


ABCF1 polyclonal antibody

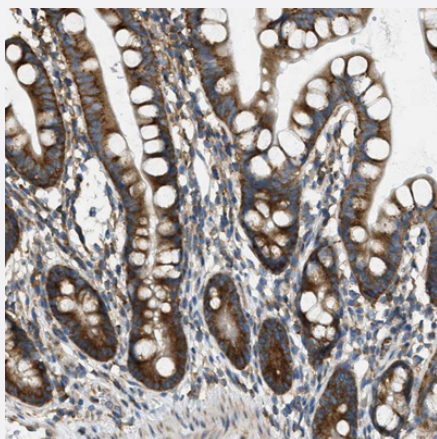
Catalog # PAB31488 Size 100 uL

Applications



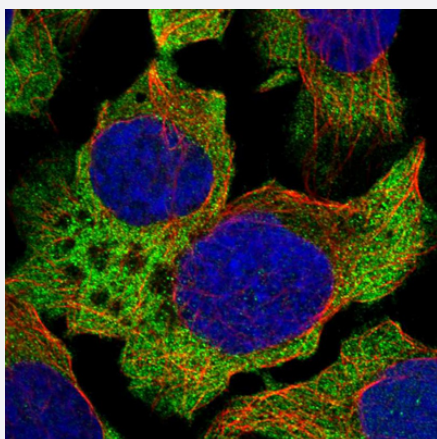
Western Blot (Cell lysate)

Western Blot analysis of (1) human cell line RT-4, and (2) human cell line U-251MG sp.



Immunohistochemistry (Formalin/PFA-fixed paraffin-embedded sections)

Immunohistochemical staining (Formalin-fixed paraffin-embedded sections) of human small intestine shows strong cytoplasmic positivity in glandular cells.



Immunofluorescence

Immunofluorescent staining of human cell line U-2 OS shows localization to cytosol. Antibody staining is shown in green.

Specification

Product Description	Rabbit polyclonal antibody raised against partial recombinant human ABCF1.
Immunogen	Recombinant protein corresponding to amino acids 85-196 of human ABCF1.
Sequence	KKDVDDDGEEKELMERLKKLSVPTSDEEDEVPAKPARGGKKTGGNVFAALIQDQSEEEEEEE KHPPKPAKPEKNRINKAVSEEQQPALKGKKGKEEKSKGKAKPQNKFAAL
Host	Rabbit
Reactivity	Human
Form	Liquid
Purification	Antigen affinity purification
Isotype	IgG
Recommend Usage	Immunofluorescence (1-4 ug/mL) Immunohistochemistry (Formalin/PFA-fixed paraffin-embedded sections) (1:50-1:200) Western Blot (1:100-1:250) The optimal working dilution should be determined by the end user.
Storage Buffer	In PBS, pH 7.2 (40% glycerol, 0.02% sodium azide).
Storage Instruction	Store at 4°C for short term storage. For long term storage store at -20°C. Aliquot to avoid repeated freezing and thawing.
Note	This product contains sodium azide: a POISONOUS AND HAZARDOUS SUBSTANCE which should be handled by trained staff only.

Applications

- Western Blot (Cell lysate)

Western Blot analysis of (1) human cell line RT-4, and (2) human cell line U-251MG sp.

- Immunohistochemistry (Formalin/PFA-fixed paraffin-embedded sections)

Immunohistochemical staining (Formalin-fixed paraffin-embedded sections) of human small intestine shows strong cytoplasmic positivity in glandular cells.

- Immunofluorescence

Immunofluorescent staining of human cell line U-2 OS shows localization to cytosol. Antibody staining is shown in green.

Gene Info — ABCF1

Entrez GeneID [23](#)

Protein Accession# [Q8NE71](#)

Gene Name ABCF1

Gene Alias ABC27, ABC50

Gene Description ATP-binding cassette, sub-family F (GCN20), member 1

Omim ID [603429](#)

Gene Ontology [Hyperlink](#)

Gene Summary The protein encoded by this gene is a member of the superfamily of ATP-binding cassette (ABC) transporters. ABC proteins transport various molecules across extra- and intra-cellular membranes. ABC genes are divided into seven distinct subfamilies (ABC1, MDR/TAP, MRP, ALD, OABP, GCN20, White). This protein is a member of the GCN20 subfamily. Unlike other members of the superfamily, this protein lacks the transmembrane domains which are characteristic of most ABC transporters. This protein may be regulated by tumor necrosis factor-alpha and play a role in enhancement of protein synthesis and the inflammation process. [provided by RefSeq]

Other Designations ATP-binding cassette 50 (TNF-alpha stimulated)|ATP-binding cassette, sub-family F, member 1|OTTHUMP00000029110|OTTHUMP00000029111|TNFalpha-inducible ATP-binding protein

Disease

- [Genetic Predisposition to Disease](#)
- [Lupus Erythematosus](#)
- [Spondylitis](#)