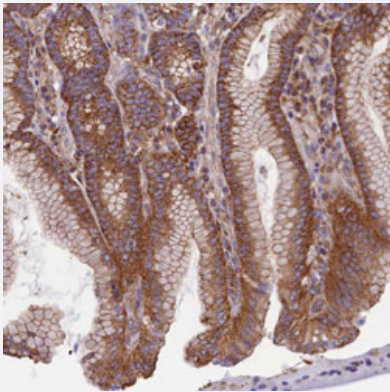


RABGAP1 polyclonal antibody

Catalog # PAB31244 Size 100 uL

Applications



Immunohistochemistry (Formalin/PFA-fixed paraffin-embedded sections)

Immunohistochemical staining (Formalin-fixed paraffin-embedded sections) of human stomach, upper with RABGAP1 polyclonal antibody (Cat # PAB31244) shows distinct cytoplasmic positivity in glandular cells.

Specification

Product Description	Rabbit polyclonal antibody raised against partial recombinant human RABGAP1.
Immunogen	Recombinant protein corresponding to human RABGAP1.
Sequence	RICQQHTKDISERQARFSSQSGETGEVQACPDKRYAM
Host	Rabbit
Reactivity	Human
Form	Liquid
Purification	Antigen affinity purification
Isotype	IgG
Recommend Usage	Immunohistochemistry (Formalin/PFA-fixed paraffin-embedded sections) (1:50-1:200) The optimal working dilution should be determined by the end user.
Storage Buffer	In PBS, pH 7.2 (40% glycerol, 0.02% sodium azide).

Storage Instruction

Store at 4°C for short term storage. For long term storage store at -20°C.
Aliquot to avoid repeated freezing and thawing.

Note

This product contains sodium azide: a POISONOUS AND HAZARDOUS SUBSTANCE which should be handled by trained staff only.

Applications

- Immunohistochemistry (Formalin/PFA-fixed paraffin-embedded sections)

Immunohistochemical staining (Formalin-fixed paraffin-embedded sections) of human stomach, upper with RABGAP1 polyclonal antibody (Cat # PAB31244) shows distinct cytoplasmic positivity in glandular cells.

Gene Info — RABGAP1

Entrez GeneID [23637](#)

Protein Accession# [Q9Y3P9](#)

Gene Name RABGAP1

Gene Alias DKFZp586D2123, GAPCENA, RP11-123N4.2, TBC1D11

Gene Description RAB GTPase activating protein 1

Gene Ontology [Hyperlink](#)

Gene Summary GAPCenA/TBC1 domain family

Other Designations OTTHUMP00000022081|Rab6 GTPase activating protein, GAPCenA/TBC1 domain family, member 11|rab6 GTPase activating protein (GAP and centrosome-associated)

Disease

- [Tobacco Use Disorder](#)