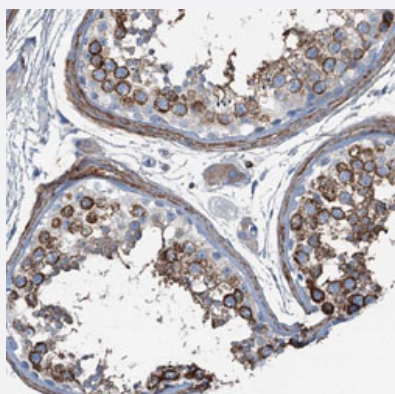


# AXL polyclonal antibody

Catalog # PAB31203      Size 100 uL

## Applications



### Immunohistochemistry (Formalin/PFA-fixed paraffin-embedded sections)

Immunohistochemical staining (Formalin-fixed paraffin-embedded sections) of human testis with AXL polyclonal antibody (Cat # PAB31203) shows strong cytoplasmic positivity in cells in seminiferous ducts.

## Specification

<b>Product Description</b>	Rabbit polyclonal antibody raised against partial recombinant human AXL.
<b>Immunogen</b>	Recombinant protein corresponding to human AXL.
<b>Sequence</b>	PYHIRVACTSSQGPSSWTHWLPVETPEGVPLGPPENISATRNGSQAFVHWQEPRAPLQGTLLGYRLAYQGQDTPEVLMDIGLRQEVTLELQ
<b>Host</b>	Rabbit
<b>Reactivity</b>	Human
<b>Form</b>	Liquid
<b>Purification</b>	Antigen affinity purification
<b>Isotype</b>	IgG
<b>Recommend Usage</b>	Immunohistochemistry (Formalin/PFA-fixed paraffin-embedded sections) (1:50-1:200) The optimal working dilution should be determined by the end user.
<b>Storage Buffer</b>	In PBS, pH 7.2 (40% glycerol, 0.02% sodium azide).

**Storage Instruction**

Store at 4°C for short term storage. For long term storage store at -20°C.  
Aliquot to avoid repeated freezing and thawing.

**Note**

This product contains sodium azide: a POISONOUS AND HAZARDOUS SUBSTANCE which should be handled by trained staff only.

## Applications

- Immunohistochemistry (Formalin/PFA-fixed paraffin-embedded sections)

Immunohistochemical staining (Formalin-fixed paraffin-embedded sections) of human testis with AXL polyclonal antibody (Cat # PAB31203) shows strong cytoplasmic positivity in cells in seminiferous ducts.

## Gene Info — AXL

**Entrez GeneID**[558](#)**Protein Accession#**[P30530](#)**Gene Name**

AXL

**Gene Alias**

JTK11, UFO

**Gene Description**

AXL receptor tyrosine kinase

**Omim ID**[109135](#)**Gene Ontology**[Hyperlink](#)**Gene Summary**

The protein encoded by this gene is a member of the receptor tyrosine kinase subfamily. Although it is similar to other receptor tyrosine kinases, this protein represents a unique structure of the extracellular region that juxtaposes IgL and FNIII repeats. It transduces signals from the extracellular matrix into the cytoplasm by binding growth factors like vitamin K-dependent protein growth-arrest-specific gene 6. It is involved in the stimulation of cell proliferation and can also mediate cell aggregation by homophilic binding. Alternatively spliced transcript variants encoding different isoforms have been identified. [provided by RefSeq]

**Other Designations**

AXL transforming sequence/gene|oncogene AXL

## Publication Reference

- [The prognostic value of the stem-like group in colorectal cancer using a panel of immunohistochemistry markers.](#)

Ong CW, Chong PY, McArt DG, Chan JY, Tan HT, Kumar AP, Chung MC, Clement MV, Soong R, Van Schaeybroeck S, Waugh DJ, Johnston PG, Dunne PD, Salto-Tellez M.

Oncotarget 2015 May; 6(14):12763.

Application: IHC-P, Human, Human colorectal cancer

- [The expression of Axl receptor tyrosine kinase influences the tumour phenotype and clinical outcome of patients with malignant pleural mesothelioma.](#)

Pinato DJ, Mauri FA, Lloyd T, Vaira V, Casadio C, Boldorini RL, Sharma R.

British Journal of Cancer 2013 Feb; 108(3):621.

Application: IHC-P, Human, Human malignant pleural mesothelioma

## Disease

- [Cardiovascular Diseases](#)
- [Carotid Artery Diseases](#)
- [Diabetes Mellitus](#)
- [Edema](#)
- [Genetic Predisposition to Disease](#)
- [Stroke](#)