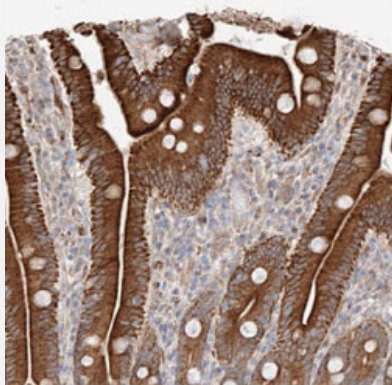


GCNT1 polyclonal antibody

Catalog # PAB31162 Size 100 uL

Applications



Immunohistochemistry (Formalin/PFA-fixed paraffin-embedded sections)

Immunohistochemical staining (Formalin-fixed paraffin-embedded sections) of human duodenum with GCNT1 polyclonal antibody (Cat # PAB31162) shows strong cytoplasmic positivity in glandular cells.

Specification

Product Description	Rabbit polyclonal antibody raised against partial recombinant human GCNT1.
Immunogen	Recombinant protein corresponding to human GCNT1.
Sequence	LINLCGMDFPIKTNLEIVRKLKLLMGENNLETERMPSHKEERWKKRYEVVNGKLTNTGTVKMLPPL ETPLFSGSAYFVVSREYVGYVLQNEKIQKLEWAQDTYSPDEYLWA
Host	Rabbit
Reactivity	Human
Form	Liquid
Purification	Antigen affinity purification
Isotype	IgG
Recommend Usage	Immunohistochemistry (Formalin/PFA-fixed paraffin-embedded sections) (1:50-1:200) The optimal working dilution should be determined by the end user.
Storage Buffer	In PBS, pH 7.2 (40% glycerol, 0.02% sodium azide).

Storage Instruction

Store at 4°C for short term storage. For long term storage store at -20°C.
Aliquot to avoid repeated freezing and thawing.

Note

This product contains sodium azide: a POISONOUS AND HAZARDOUS SUBSTANCE which should be handled by trained staff only.

Applications

- Immunohistochemistry (Formalin/PFA-fixed paraffin-embedded sections)

Immunohistochemical staining (Formalin-fixed paraffin-embedded sections) of human duodenum with GCNT1 polyclonal antibody (Cat # PAB31162) shows strong cytoplasmic positivity in glandular cells.

Gene Info — GCNT1

Entrez GeneID

[2650](#)

Protein Accession#

[Q02742](#)

Gene Name

GCNT1

Gene Alias

C2GNT, C2GNT-L, C2GNT1, G6NT, MGC126335, MGC126336, NACGT2, NAGCT2

Gene Description

glucosaminyl (N-acetyl) transferase 1, core 2 (beta-1,6-N-acetylglucosaminyltransferase)

Omim ID

[600391](#)

Gene Ontology

[Hyperlink](#)

Gene Summary

This gene is a member of the beta-1,6-N-acetylglucosaminyltransferase gene family. It is essential to the formation of Gal beta 1-3(GlcNAc beta 1-6)GalNAc structures and the core 2 O-glycan branch. The gene coding this enzyme was originally mapped to 9q21, but was later localized to 9q13. Multiple alternatively spliced variants, encoding the same protein, have been identified. [provided by RefSeq]

Other Designations

OTTHUMP00000021502|beta-1,3-galactosyl-O-glycosyl-glycoprotein beta-1,6-N-acetylglucosaminyltransferase|beta-1,6-N-acetylglucosaminyltransferase|core 2 GnT|core 2 beta-1,6-N-acetylglucosaminyltransferase |core 2 branching enzyme

Pathway

- [Metabolic pathways](#)
- [O-Glycan biosynthesis](#)