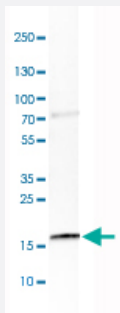


CAMP polyclonal antibody

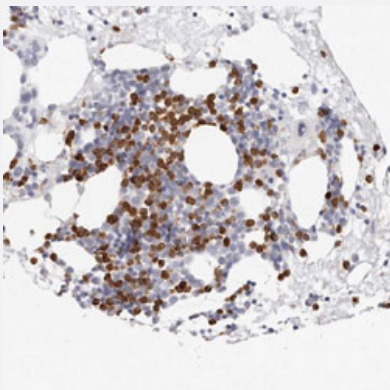
Catalog # PAB31141 Size 100 uL

Applications



Western Blot (Tissue lysate)

Western Blot analysis of human plasma tissue lysate with CAMP polyclonal antibody (Cat # PAB31141).



Immunohistochemistry (Formalin/PFA-fixed paraffin-embedded sections)

Immunohistochemical staining (Formalin-fixed paraffin-embedded sections) of human bone marrow with CAMP polyclonal antibody (Cat # PAB31141) shows strong cytoplasmic positivity in subsets of bone marrow poietic cells.

Specification

Product Description	Rabbit polyclonal antibody raised against partial recombinant human CAMP.
Immunogen	Recombinant protein corresponding to human CAMP.
Sequence	RSSDANLYRLDLDPRPTMDGDPDTPKPVSTVKEVCPRTTQQSPEDCDFKKDGLVKRCMGT VTLNQARGSFDISCDKDNKRFBALLGDFFRKSKEKIGKEFKRIVQRIKDFLRNLVPR
Host	Rabbit
Reactivity	Human

Form	Liquid
Purification	Antigen affinity purification
Isotype	IgG
Recommend Usage	Immunohistochemistry (Formalin/PFA-fixed paraffin-embedded sections) (1:2500-1:5000) Western Blot (1:500-1:1000) The optimal working dilution should be determined by the end user.
Storage Buffer	In PBS, pH 7.2 (40% glycerol, 0.02% sodium azide).
Storage Instruction	Store at 4°C for short term storage. For long term storage store at -20°C. Aliquot to avoid repeated freezing and thawing.
Note	This product contains sodium azide: a POISONOUS AND HAZARDOUS SUBSTANCE which should be handled by trained staff only.

Applications

- Western Blot (Tissue lysate)

Western Blot analysis of human plasma tissue lysate with CAMP polyclonal antibody (Cat # PAB31141).

- Immunohistochemistry (Formalin/PFA-fixed paraffin-embedded sections)

Immunohistochemical staining (Formalin-fixed paraffin-embedded sections) of human bone marrow with CAMP polyclonal antibody (Cat # PAB31141) shows strong cytoplasmic positivity in subsets of bone marrow poietic cells.

Gene Info — CAMP

Entrez GeneID	820
Protein Accession#	P49913
Gene Name	CAMP
Gene Alias	CAP18, CRAMP, FALL-39, FALL39, HSD26, LL37
Gene Description	cathelicidin antimicrobial peptide
Omim ID	600474
Gene Ontology	Hyperlink
Gene Summary	Cathelicidin antimicrobial protein is an antimicrobial protein found in specific granules of polymorphonuclear leukocytes (PMNs).[supplied by OMIM]

Other Designations

-