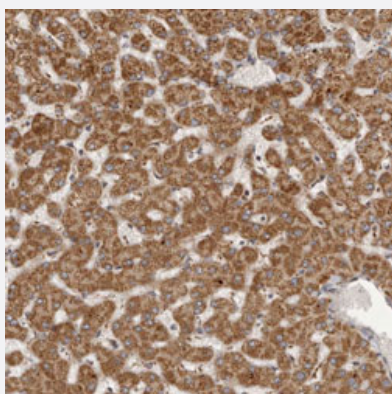


SEMA3A polyclonal antibody

Catalog # PAB31132 Size 100 uL

Applications



Immunohistochemistry (Formalin/PFA-fixed paraffin-embedded sections)

Immunohistochemical staining (Formalin-fixed paraffin-embedded sections) of human liver with SEMA3A polyclonal antibody (Cat # PAB31132) shows cytoplasmic positivity in hepatocytes.

Specification

Product Description	Rabbit polyclonal antibody raised against partial recombinant human SEMA3A.
Immunogen	Recombinant protein corresponding to human SEMA3A.
Sequence	VPRLKLSYKEMLESNNVITFNGLANSSSYHTFLLDEERSRLYGAKDHIFSFDLVNIKDFQKIVWPV SYTRRDECKWAGKDILKECANFIKVL
Host	Rabbit
Reactivity	Human
Form	Liquid
Purification	Antigen affinity purification
Isotype	IgG
Recommend Usage	Immunohistochemistry (Formalin/PFA-fixed paraffin-embedded sections) (1:20-1:50) The optimal working dilution should be determined by the end user.
Storage Buffer	In PBS, pH 7.2 (40% glycerol, 0.02% sodium azide).

Storage Instruction

Store at 4°C for short term storage. For long term storage store at -20°C.
Aliquot to avoid repeated freezing and thawing.

Note

This product contains sodium azide: a POISONOUS AND HAZARDOUS SUBSTANCE which should be handled by trained staff only.

Applications

- Immunohistochemistry (Formalin/PFA-fixed paraffin-embedded sections)

Immunohistochemical staining (Formalin-fixed paraffin-embedded sections) of human liver with SEMA3A polyclonal antibody (Cat # PAB31132) shows cytoplasmic positivity in hepatocytes.

Gene Info — SEMA3A

Entrez GeneID [10371](#)

Protein Accession# [Q14563](#)

Gene Name SEMA3A

Gene Alias Hsema-I, Hsema-III, MGC133243, SEMA1, SEMAD, SEMAIII, SEMAL, SemD, coll-1

Gene Description sema domain, immunoglobulin domain (Ig), short basic domain, secreted, (semaphorin) 3A

Omim ID [603961](#)

Gene Ontology [Hyperlink](#)

Gene Summary This gene is a member of the semaphorin family and encodes a protein with an Ig-like C2-type (immunoglobulin-like) domain, a PSI domain and a Sema domain. This secreted protein can function as either a chemorepulsive agent, inhibiting axonal outgrowth, or as a chemoattractive agent, stimulating the growth of apical dendrites. In both cases, the protein is vital for normal neuronal pattern development. Increased expression of this protein is associated with schizophrenia and is seen in a variety of human tumor cell lines. Also, aberrant release of this protein is associated with the progression of Alzheimer's disease. [provided by RefSeq]

Other Designations collapsin 1|semaphorin 3A|semaphorin D|semaphorin III|semaphorin L|semaphorin-like

Pathway

- [Axon guidance](#)

Disease

- [Alzheimer Disease](#)
- [Genetic Predisposition to Disease](#)
- [Memory](#)
- [Schizophrenia](#)
- [Schizophrenic Psychology](#)
- [Tobacco Use Disorder](#)