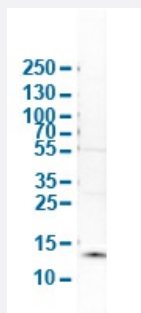


S100A9 polyclonal antibody

Catalog # PAB31112

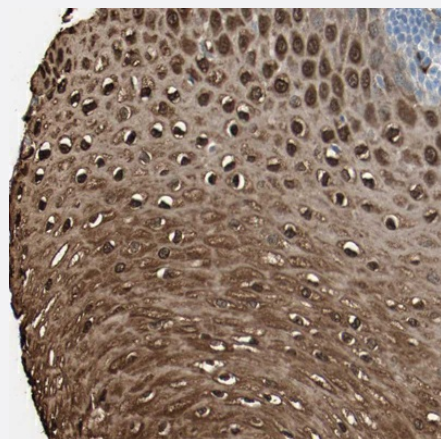
Size 100 uL

Applications



Western Blot (Cell lysate)

Western Blot analysis of human cell line SK-BR-3.



Immunohistochemistry (Formalin/PFA-fixed paraffin-embedded sections)

Immunohistochemical staining (Formalin-fixed paraffin-embedded sections) of human esophagus shows strong cytoplasmic and nuclear positivity in squamous epithelial cells.

Specification

Product Description	Rabbit polyclonal antibody raised against partial recombinant human S100A9.
Immunogen	Recombinant protein corresponding to amino acids 3-100 of human S100A9.
Sequence	CKMSQLERNIETIINTFHQYSVKLGHPDTLNQGEFKELVRKDLQNFLKKENKNEKVIEHIMEDLDTN ADKQLSFEEFIMLMARLTWASHEKMHEGDEG
Host	Rabbit
Reactivity	Human

Form	Liquid
Purification	Antigen affinity purification
Isotype	IgG
Recommend Usage	Immunohistochemistry (Formalin/PFA-fixed paraffin-embedded sections) (1:2500-1:5000) Western Blot (1:100-1:250) The optimal working dilution should be determined by the end user.
Storage Buffer	In PBS, pH 7.2 (40% glycerol, 0.02% sodium azide).
Storage Instruction	Store at 4°C for short term storage. For long term storage store at -20°C. Aliquot to avoid repeated freezing and thawing.
Note	This product contains sodium azide: a POISONOUS AND HAZARDOUS SUBSTANCE which should be handled by trained staff only.

Applications

- Western Blot (Cell lysate)

Western Blot analysis of human cell line SK-BR-3.

- Immunohistochemistry (Formalin/PFA-fixed paraffin-embedded sections)

Immunohistochemical staining (Formalin-fixed paraffin-embedded sections) of human esophagus shows strong cytoplasmic and nuclear positivity in squamous epithelial cells.

Gene Info — S100A9

Entrez GeneID	6280
Protein Accession#	P06702
Gene Name	S100A9
Gene Alias	60B8AG, CAGB, CFAG, CGLB, L1AG, LIAG, MAC387, MIF, MRP14, NIF, P14
Gene Description	S100 calcium binding protein A9
Omim ID	123886
Gene Ontology	Hyperlink

Gene Summary

The protein encoded by this gene is a member of the S100 family of proteins containing 2 EF-hand calcium-binding motifs. S100 proteins are localized in the cytoplasm and/or nucleus of a wide range of cells, and involved in the regulation of a number of cellular processes such as cell cycle progression and differentiation. S100 genes include at least 13 members which are located as a cluster on chromosome 1q21. This protein may function in the inhibition of casein kinase and altered expression of this protein is associated with the disease cystic fibrosis. [provided by RefSeq]

Other Designations

OTTHUMP00000015331|S100 calcium-binding protein A9|S100 calcium-binding protein A9 (calgranulin B)|calgranulin B

Disease

- [Dermatitis](#)
- [Genetic Predisposition to Disease](#)
- [Kidney Calculi](#)