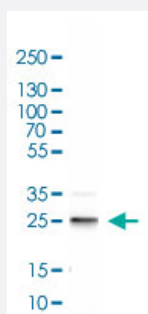


# UCHL1 polyclonal antibody

Catalog # PAB31090

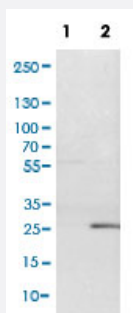
Size 100 uL

## Applications



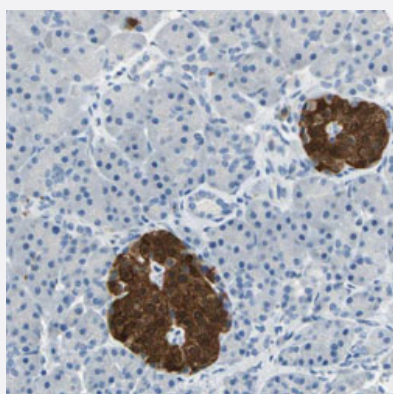
### Western Blot (Tissue lysate)

Western Blot (Tissue lysate) analysis of mouse cerebral cortex.



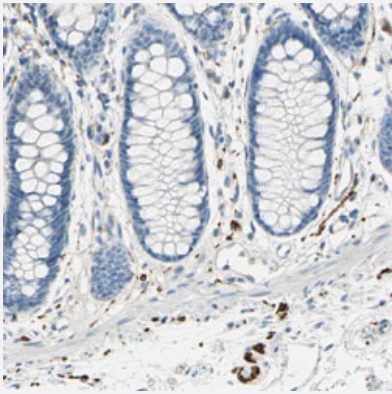
### Western Blot (Cell lysate)

Western Blot (Cell lysate) analysis of (1) NIH-3T3 cell lysate and (2) NBT-II cell lysate (Rat Wistar bladder tumour cells).



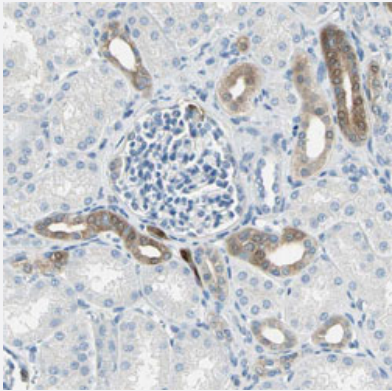
### Immunohistochemistry (Formalin/PFA-fixed paraffin-embedded sections)

Immunohistochemical staining of human pancreas shows strong cytoplasmic positivity in islets of Langerhans.



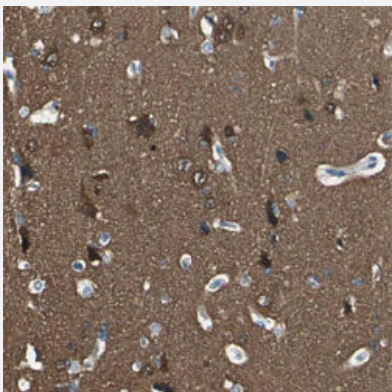
### Immunohistochemistry (Formalin/PFA-fixed paraffin-embedded sections)

Immunohistochemical staining of human rectum shows strong cytoplasmic positivity in peripheral ganglion and peripheral nerves.



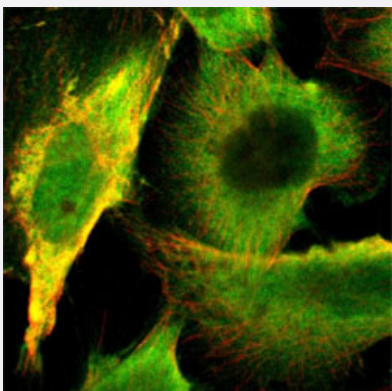
### Immunohistochemistry (Formalin/PFA-fixed paraffin-embedded sections)

Immunohistochemical staining of human kidney shows moderate cytoplasmic positivity in cells in tubules.



### Immunohistochemistry (Formalin/PFA-fixed paraffin-embedded sections)

Immunohistochemical staining of human cerebral cortex shows strong cytoplasmic positivity in neurons and in neuropil.



### Immunofluorescence

Immunofluorescent staining of U-251MG cell line with antibody shows positivity in nucleoplasm and cytosol (green).

<b>Product Description</b>	Rabbit polyclonal antibody raised against partial recombinant human UCHL1.
<b>Immunogen</b>	Recombinant protein corresponding to human UCHL1.
<b>Sequence</b>	QEVSPKVYFMKQTIGNSCGTIGLIHAVANNQDKLGFEDGSVLKQFLSETEKMSPEDRAKCFEKNE AIQAAHDAVAQEGQCRVDDKVNHFHILFNNVDGHL YELDGRMPFPVNHGASSEDLLKDAAKVC REFTEREQGEVRFSAVAL
<b>Host</b>	Rabbit
<b>Reactivity</b>	Human, Mouse, Rat
<b>Form</b>	Liquid
<b>Purification</b>	Antigen affinity purification
<b>Isotype</b>	IgG
<b>Recommend Usage</b>	Immunohistochemistry (Formalin/PFA-fixed paraffin-embedded sections) (1:2500-5000) Western Blot (1:500-1000) Immunofluorescence (1-4 ug/mL) The optimal working dilution should be determined by the end user.
<b>Storage Buffer</b>	In PBS, pH 7.2 (40% glycerol, 0.02% sodium azide).
<b>Storage Instruction</b>	Store at 4°C. For long term storage store at -20°C. Aliquot to avoid repeated freezing and thawing.
<b>Note</b>	This product contains sodium azide: a POISONOUS AND HAZARDOUS SUBSTANCE which should be handled by trained staff only.

## Applications

- Western Blot (Tissue lysate)

Western Blot (Tissue lysate) analysis of mouse cerebral cortex.

- Western Blot (Cell lysate)

Western Blot (Cell lysate) analysis of (1) NIH-3T3 cell lysate and (2) NBT-II cell lysate (Rat Wistar bladder tumour cells).

- Immunohistochemistry (Formalin/PFA-fixed paraffin-embedded sections)

Immunohistochemical staining of human pancreas shows strong cytoplasmic positivity in islets of Langerhans.

- Immunohistochemistry (Formalin/PFA-fixed paraffin-embedded sections)

Immunohistochemical staining of human rectum shows strong cytoplasmic positivity in peripheral ganglion and peripheral nerves.

- Immunohistochemistry (Formalin/PFA-fixed paraffin-embedded sections)

Immunohistochemical staining of human kidney shows moderate cytoplasmic positivity in cells in tubules.

- Immunohistochemistry (Formalin/PFA-fixed paraffin-embedded sections)

Immunohistochemical staining of human cerebral cortex shows strong cytoplasmic positivity in neurons and in neuropil.

- Immunofluorescence

Immunofluorescent staining of U-251MG cell line with antibody shows positivity in nucleoplasm and cytosol (green).

## Gene Info — UCHL1

**Entrez GeneID** [7345](#)

**Protein Accession#** [P09936](#)

**Gene Name** UCHL1

**Gene Alias** PARK5, PGP9.5, Uch-L1

**Gene Description** ubiquitin carboxyl-terminal esterase L1 (ubiquitin thiolesterase)

**Omim ID** [168600](#) [191342](#)

**Gene Ontology** [Hyperlink](#)

**Gene Summary** The protein encoded by this gene belongs to the peptidase C12 family. This enzyme is a thiol protease that hydrolyzes a peptide bond at the C-terminal glycine of ubiquitin. This gene is specifically expressed in the neurons and in cells of the diffuse neuroendocrine system. Mutations in this gene may be associated with Parkinson disease

**Other Designations** ubiquitin C-terminal esterase L1|ubiquitin carboxyl-terminal esterase L1|ubiquitin thiolesterase L1

## Publication Reference

- [UCH-LI acts as a novel prognostic biomarker in gastric cardiac adenocarcinoma.](#)

Yang H, Zhang C, Fang S, Ou R, Li W, Xu Y.

International Journal of Clinical and Experimental Pathology 2015 Nov; 8(11):13957.

Application: IHC-P, WB-Tr, Human, Human gastric cardiac adenocarcinoma, MGC803, MKN45 cells

- [The prognostic potential and oncogenic effects of PRR11 expression in hilar cholangiocarcinoma.](#)

Chen Y, Cha Z, Fang W, Qian B, Yu W, Li W, Yu G, Gao Y.

Oncotarget 2015 Aug; 6(24):20419.

Application: IHC-P, WB-Tr, Human, Human hilar cholangiocarcinoma, Human tissue microarray, QBC939 cells

- [Antibody-based proteomics for discovery and exploration of proteins expressed in pancreatic islets.](#)

Lindskog C, Asplund A, Engkvist M, Uhlen M, Korsgren O, Ponten F.

Discovery Medicine 2010 Jun; 9(49):565.

## Disease

- [Alzheimer disease](#)
- [Genetic Predisposition to Disease](#)
- [Huntington disease](#)
- [Movement Disorders](#)
- [Multiple System Atrophy](#)
- [Parkinson disease](#)
- [Parkinsonian Disorders](#)