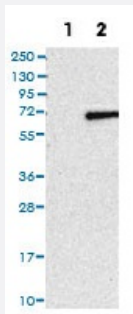


RSPRY1 polyclonal antibody

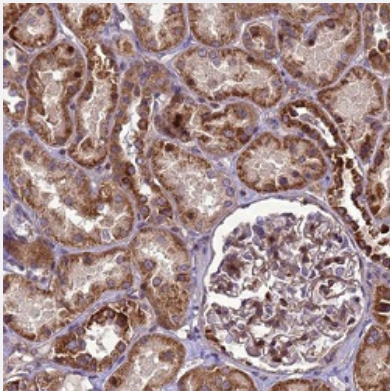
Catalog # PAB31015 Size 100 uL

Applications



Western Blot (Cell lysate)

Western Blot (Cell lysate) analysis of (1) Negative control (vector only transfected HEK293T lysate), and (2) Over-expression lysate (Co-expressed with a C-terminal myc-DDK tag (~3.1 kDa) in mammalian HEK293T cells).



Immunohistochemistry (Formalin/PFA-fixed paraffin-embedded sections)

Immunohistochemical staining (Formalin-fixed paraffin-embedded sections) of human kidney shows strong cytoplasmic positivity in renal tubules.

Specification

Product Description	Rabbit polyclonal antibody raised against partial recombinant human RSPRY1.
Immunogen	Recombinant protein corresponding to human RSPRY1.
Sequence	GRGPHEPRRKKQNV DGLVLD TLAVIRTLVDNDQEPPYSMITLHEMAETDEGWLDVVQSLIRVIPLE DPLGPAVITLLLDECPLPTKDALQKLTEILNLNGEVACQDSSHPAKHRNTSAVLGCLA EKLGPAS IGLLSPGILEYLLQC
Host	Rabbit
Reactivity	Human

Form	Liquid
Purification	Affinity purification
Isotype	IgG
Recommend Usage	Immunohistochemistry (Formalin/PFA-fixed paraffin-embedded sections) (1:50-200) Western Blot (1:100-250) The optimal working dilution should be determined by the end user.
Storage Buffer	In PBS, pH 7.2 (40% glycerol, 0.02% sodium azide).
Storage Instruction	Store at 4°C. For long term storage store at -20°C. Aliquot to avoid repeated freezing and thawing.
Note	This product contains sodium azide: a POISONOUS AND HAZARDOUS SUBSTANCE which should be handled by trained staff only.

Applications

- Western Blot (Cell lysate)

Western Blot (Cell lysate) analysis of (1) Negative control (vector only transfected HEK293T lysate), and (2) Over-expression lysate (Co-expressed with a C-terminal myc-DDK tag (~3.1 kDa) in mammalian HEK293T cells).

- Immunohistochemistry (Formalin/PFA-fixed paraffin-embedded sections)

Immunohistochemical staining (Formalin-fixed paraffin-embedded sections) of human kidney shows strong cytoplasmic positivity in renal tubules.

Gene Info — RSPRY1

Entrez GeneID	89970
Protein Accession#	Q96DX4
Gene Name	RSPRY1
Gene Alias	KIAA1972
Gene Description	ring finger and SPRY domain containing 1
Gene Ontology	Hyperlink
Other Designations	OTTHUMP00000164667