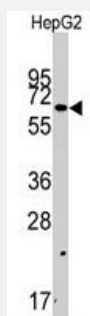


SWAP70 polyclonal antibody

Catalog # PAB3089

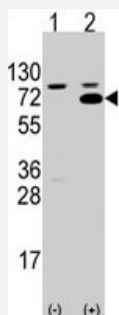
Size 400 uL

Applications



Western Blot (Cell lysate)

Western blot analysis of SWAP70 polyclonal antibody (Cat # PAB3089) in HepG2 cell line lysates (35 ug/lane). SWAP70 (arrow) was detected using the purified polyclonal antibody.



Western Blot (Transfected lysate)

Western blot analysis of SWAP70 (arrow) using rabbit SWAP70 polyclonal antibody (Cat # PAB3089). 293 cell lysates (2 ug/lane) either nontransfected (Lane 1) or transiently transfected with the SWAP70 gene (Lane 2) (Origene Technologies).

Specification

Product Description	Rabbit polyclonal antibody raised against synthetic peptide of SWAP70.
Immunogen	A synthetic peptide (conjugated with KLH) corresponding to internal region of human SWAP70.
Host	Rabbit
Reactivity	Human
Form	Liquid
Purification	Protein G purification

Recommend Usage	Western Blot (1:1000) The optimal working dilution should be determined by the end user.
Storage Buffer	In PBS (0.09% sodium azide)
Storage Instruction	Store at 4°C. For long term storage store at -20°C. Aliquot to avoid repeated freezing and thawing.
Note	This product contains sodium azide: a POISONOUS AND HAZARDOUS SUBSTANCE which should be handled by trained staff only.

Applications

- Western Blot (Cell lysate)

Western blot analysis of SWAP70 polyclonal antibody (Cat # PAB3089) in HepG2 cell line lysates (35 ug/lane). SWAP70 (arrow) was detected using the purified polyclonal antibody.

- Western Blot (Transfected lysate)

Western blot analysis of SWAP70 (arrow) using rabbit SWAP70 polyclonal antibody (Cat # PAB3089). 293 cell lysates (2 ug/lane) either nontransfected (Lane 1) or transiently transfected with the SWAP70 gene (Lane 2) (Origene Technologies).

Gene Info — SWAP70

Entrez GeneID	23075
Protein Accession#	NP_055870;Q9UH65
Gene Name	SWAP70
Gene Alias	FLJ39540, HSPC321, KIAA0640, SWAP-70
Gene Description	SWAP-70 protein
Omim ID	604762
Gene Ontology	Hyperlink
Other Designations	-

Publication Reference

- [SWAP-70 identifies a transitional subset of actin filaments in motile cells.](#)

Hilpela P, Oberbanscheidt P, Hahne P, Hund M, Kalhammer G, Small JV, Bahler M.

Molecular Biology of the Cell 2003 Aug; 14(8):3242.

Application: IF, WB-Ti, WB-Tr, Human, Mouse, Rat, B16F1 cells, Organs

- [Analysis of SWAP-70 as a candidate gene for non-X-linked hyper IgM syndrome and common variable immunodeficiency.](#)

Rapalus L, Minegishi Y, Lavoie A, Cunningham-Rundles C, Conley ME.

Clinical Immunology (Orlando, Fla.) 2001 Dec; 101(3):270.

- [Association of SWAP-70 with the B cell antigen receptor complex.](#)

Masat L, Caldwell J, Armstrong R, Khoshnevisan H, Jessberger R, Herndier B, Wabl M, Ferrick D.

PNAS 2000 Feb; 97(5):2180.

Application: IF, IHC-P, IP-WB, WB-Ce, Human, Mouse, Tonsil, Thymus, Cortex, Medulla, B lymphocytes, Spleen, WEHI-279, 2PK3 cells