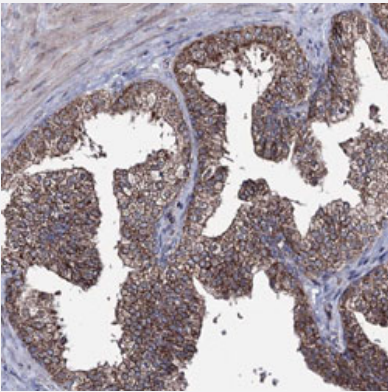


# CREB3L4 polyclonal antibody

Catalog # PAB30874      Size 100 uL

## Applications



### Immunohistochemistry (Formalin/PFA-fixed paraffin-embedded sections)

Immunohistochemical staining (Formalin-fixed paraffin-embedded sections) of human prostate with CREB3L4 polyclonal antibody (Cat # PAB30874) shows strong cytoplasmic positivity in glandular cells.

## Specification

<b>Product Description</b>	Rabbit polyclonal antibody raised against partial recombinant human CREB3L4.
<b>Immunogen</b>	Recombinant protein corresponding to human CREB3L4.
<b>Sequence</b>	ELERHNISLVAQLRQLQTLIAQTSNKAQTSTCVLILLFSLALILPSFSPFQSRPEAGSEDYQPHGV TSRNILTHKDV TENLETQVVESRLREPPGAKDANGSTR
<b>Host</b>	Rabbit
<b>Reactivity</b>	Human
<b>Form</b>	Liquid
<b>Purification</b>	Antigen affinity purification
<b>Isotype</b>	IgG
<b>Recommend Usage</b>	Immunohistochemistry (Formalin/PFA-fixed paraffin-embedded sections) (1:500-1:1000) The optimal working dilution should be determined by the end user.
<b>Storage Buffer</b>	In PBS, pH 7.2 (40% glycerol, 0.02% sodium azide).

**Storage Instruction**

Store at 4°C. For long term storage store at -20°C.  
Aliquot to avoid repeated freezing and thawing.

**Note**

This product contains sodium azide: a POISONOUS AND HAZARDOUS SUBSTANCE which should be handled by trained staff only.

## Applications

- Immunohistochemistry (Formalin/PFA-fixed paraffin-embedded sections)

Immunohistochemical staining (Formalin-fixed paraffin-embedded sections) of human prostate with CREB3L4 polyclonal antibody (Cat # PAB30874) shows strong cytoplasmic positivity in glandular cells.

## Gene Info — CREB3L4

**Entrez GeneID** [148327](#)

**Protein Accession#** [Q8TEY5](#)

**Gene Name** CREB3L4

**Gene Alias** AIBZIP, ATCE1, CREB3, CREB4, JAL, hJAL

**Gene Description** cAMP responsive element binding protein 3-like 4

**Omim ID** [607138](#)

**Gene Ontology** [Hyperlink](#)

**Gene Summary** cAMP response element-binding (CREB) proteins are a family of mammalian transcription activators. For further background information on CREB proteins, see CREB1 (MIM 123810).[supplied by OMIM]

**Other Designations** OTTHUMP00000035264|OTTHUMP00000035265|OTTHUMP00000035266|androgen-induced basic leucine zipper|cAMP responsive element binding protein 1

## Pathway

- [Melanogenesis](#)
- [Prostate cancer](#)