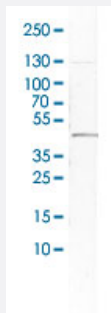


# DCN polyclonal antibody

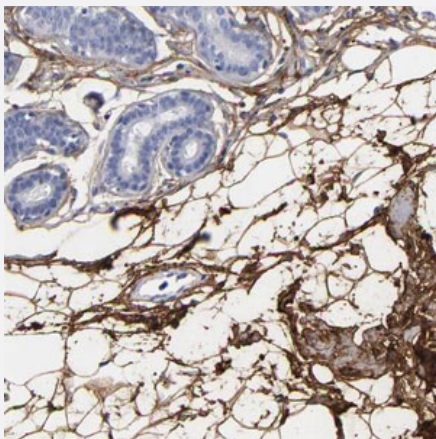
Catalog # PAB30851      Size 100 uL

## Applications



### Western Blot (Cell lysate)

Western Blot (Cell lysate) analysis of human U-2197 cell.



### Immunohistochemistry (Formalin/PFA-fixed paraffin-embedded sections)

Immunohistochemical staining (Formalin-fixed paraffin-embedded sections) of human breast shows distinct positivity in adipocytes and extracellular matrix.

## Specification

<b>Product Description</b>	Rabbit polyclonal antibody raised against partial recombinant human DCN.
<b>Immunogen</b>	Recombinant protein corresponding to human DCN.
<b>Sequence</b>	TNITSIPQGLPPSLTELHLDGNKISRVDAAASLKGLNNLAKLGLSFNSISAVDNGSLANTPHLRELHLD NNKLTRVPGGLAEHKYIQVVYLHNNNISVVGSSDFCPPGHNTKKASYSGVSLFSNPVQY
<b>Host</b>	Rabbit
<b>Reactivity</b>	Human

Form	Liquid
Purification	Affinity purification
Isotype	IgG
Recommend Usage	Immunohistochemistry (Formalin/PFA-fixed paraffin-embedded sections) (1:500-1000) Western Blot (1:100-250) The optimal working dilution should be determined by the end user.
Storage Buffer	In PBS, pH 7.2 (40% glycerol, 0.02% sodium azide).
Storage Instruction	Store at 4°C. For long term storage store at -20°C. Aliquot to avoid repeated freezing and thawing.
Note	This product contains sodium azide: a POISONOUS AND HAZARDOUS SUBSTANCE which should be handled by trained staff only.

## Applications

- Western Blot (Cell lysate)

Western Blot (Cell lysate) analysis of human U-2197 cell.

- Immunohistochemistry (Formalin/PFA-fixed paraffin-embedded sections)

Immunohistochemical staining (Formalin-fixed paraffin-embedded sections) of human breast shows distinct positivity in adipocytes and extracellular matrix.

## Gene Info — DCN

Entrez GeneID	<a href="#">1634</a>
GeneBank Accession#	<a href="#">P07585</a>
Gene Name	DCN
Gene Alias	CSCD, DSPG2, PG40, PGII, PGS2, SLRR1B
Gene Description	decorin
Omim ID	<a href="#">125255 610048</a>
Gene Ontology	<a href="#">Hyperlink</a>

**Gene Summary**

The protein encoded by this gene is a small cellular or pericellular matrix proteoglycan that is closely related in structure to biglycan protein. The encoded protein and biglycan are thought to be the result of a gene duplication. This protein is a component of connective tissue, binds to type I collagen fibrils, and plays a role in matrix assembly. It contains one attached glycosaminoglycan chain. This protein is capable of suppressing the growth of various tumor cell lines. There are multiple alternatively spliced transcript variants known for this gene. This gene is a candidate gene for Marfan syndrome. [provided by RefSeq]

**Other Designations**

bone proteoglycan III|decorin proteoglycan|dermatan sulphate proteoglycans III|proteoglycan core protein|small leucine-rich protein 1B

**Pathway**

- [TGF-beta signaling pathway](#)

**Disease**

- [Breast cancer](#)
- [Breast Neoplasms](#)
- [Cardiovascular Diseases](#)
- [Diabetes Mellitus](#)
- [Diabetic Nephropathies](#)
- [Disease Progression](#)
- [Edema](#)
- [Genetic Predisposition to Disease](#)
- [Myopia](#)
- [Ovarian Neoplasms](#)
- [Proteinuria](#)