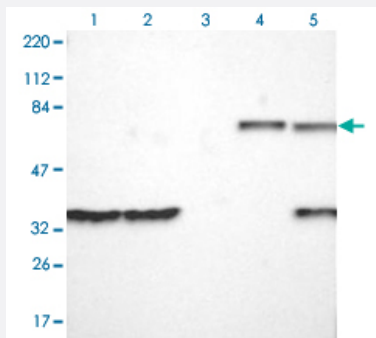


ANXA6 polyclonal antibody

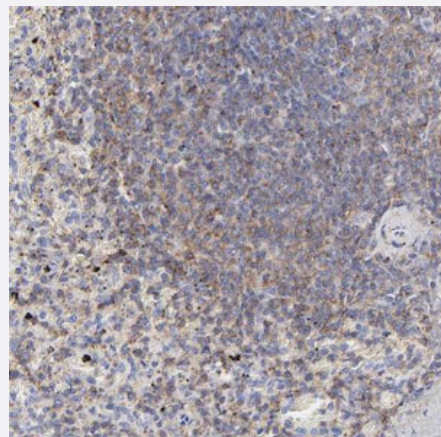
Catalog # PAB30840 Size 100 uL

Applications



Western Blot

Western Blot analysis of (1) Human RT-4 cell, (2) Human U-251MG sp cell, (3) Human plasma (IgG/HSA depleted), (4) Human liver tissue and (5) Human tonsil tissue.



Immunohistochemistry (Formalin/PFA-fixed paraffin-embedded sections)

Immunohistochemical staining (Formalin-fixed paraffin-embedded sections) of human spleen shows cytoplasmic positivity in cells of red pulp and white pulp.

Specification

Product Description	Rabbit polyclonal antibody raised against partial recombinant human ANXA6.
Immunogen	Recombinant protein corresponding to human ANXA6.
Sequence	LVAAYKDAYERDLEADIIGDTSGHFQKMLVVLLQGTREDDVVSSEDLVQQDVQDLYEAGELKWG TDEAQFMYLGNRSKQHLRLVFDEYLKTTGKPIEASIRGELSGDFEKLML
Host	Rabbit
Reactivity	Human

Form	Liquid
Purification	Affinity purification
Isotype	IgG
Recommend Usage	Immunohistochemistry (Formalin/PFA-fixed paraffin-embedded sections) (1:500-1000) Western Blot (1:100-250) The optimal working dilution should be determined by the end user.
Storage Buffer	In PBS, pH 7.2 (40% glycerol, 0.02% sodium azide).
Storage Instruction	Store at 4°C. For long term storage store at -20°C. Aliquot to avoid repeated freezing and thawing.
Note	This product contains sodium azide: a POISONOUS AND HAZARDOUS SUBSTANCE which should be handled by trained staff only.

Applications

- Western Blot

Western Blot analysis of (1) Human RT-4 cell, (2) Human U-251MG sp cell, (3) Human plasma (IgG/HSA depleted), (4) Human liver tissue and (5) Human tonsil tissue.

- Immunohistochemistry (Formalin/PFA-fixed paraffin-embedded sections)

Immunohistochemical staining (Formalin-fixed paraffin-embedded sections) of human spleen shows cytoplasmic positivity in cells of red pulp and white pulp.

Gene Info — ANXA6

Entrez GeneID	309
GeneBank Accession#	P08133
Gene Name	ANXA6
Gene Alias	ANX6, CBP68
Gene Description	annexin A6
Omim ID	114070
Gene Ontology	Hyperlink

Gene Summary

Annexin VI belongs to a family of calcium-dependent membrane and phospholipid binding proteins. Although their functions are still not clearly defined, several members of the annexin family have been implicated in membrane-related events along exocytotic and endocytotic pathways. The annexin VI gene is approximately 60 kbp long and contains 26 exons. It encodes a protein of about 68 kDa that consists of eight 68-amino acid repeats separated by linking sequences of variable lengths. It is highly similar to human annexins I and II sequences, each of which contain four such repeats. Exon 21 of annexin VI is alternatively spliced, giving rise to two isoforms that differ by a 6-amino acid insertion at the start of the seventh repeat. Annexin VI has been implicated in mediating the endosome aggregation and vesicle fusion in secreting epithelia during exocytosis. [provided by RefSeq]

Other Designations

annexin VI|annexin VI (p68)|calcium-binding protein p68|calelectrin|calphobindin II

Disease

- [Femur Head Necrosis](#)
- [Genetic Predisposition to Disease](#)